

MISSISSIPPI MARKET BULLETIN

(est 1928)



MISSISSIPPI DEPARTMENT OF AGRICULTURE & COMMERCE ▪ ANDY GIPSON, COMMISSIONER

VOLUME 96 NUMBER 8 APRIL 15, 2024 JACKSON, MS

Mississippi's State Fruit: Blueberries Growing in Popularity, Challenges

By Bonnie Coblenz
MSU Extension Service

Blueberries celebrated their one-year anniversary as the official state fruit of Mississippi, joining well-known magnolias and mockingbirds as symbols of the state.

A group of fourth graders from Madison County lobbied the state legislature to give blueberries this honor. They backed their bid for this state title with research-backed information they found on the Mississippi State University Extension website.

"My class was the brain behind the project, and your website is what led us to picking the blueberry," Lisa



Mississippi's blueberry industry has an uphill battle to remain strong, as the way blueberries were grown for decades is no longer as economically viable as it once was. (Photo by MSU Extension Service/Kevin Hudson)

Parenteau, the students' teacher, said of MSU Extension in a tweet.

Blueberries have grown in popularity over the last two decades. Americans now consume more than 2 pounds of blueberries annually, up significantly from the 0.3 pounds they ate at the turn of the century.

Despite their popularity and elevated status in the state, the blueberry industry in Mississippi has an uphill battle to remain strong. The way blueberries were grown for decades in the state is no longer as economically viable as it once was.

"For a long time, small growers had a crop that they took to a co-op to sell through a wholesaler to other markets," said MSU Extension fruit specialist Eric Stafne. "Now the wholesalers are demanding higher quality fruit than most small growers can provide due to old varieties,

changing environmental factors or other management practices."

Mississippi growers who decide to shift to a new variety face a time-consuming and expensive process.

"Depending on how fast the new bushes grow, the first harvest for new bushes usually begins in about year three," Stafne said.

Stafne said blueberry producers who want to compete in the wholesale market must adopt new varieties, add irrigation, implement better spray programs, and use improved harvest technology and frost protection.

"These changes are necessary for growers with significant blueberry acreage, but small and mid-size growers may not have the capital to implement these changes, or it may not be cost effective based on size of the operation," Stafne said.

Unpredictable weather also has an

impact. The freeze in March 2023 devastated the blueberry crop, but droughts present even more challenges.

"Drought can damage root systems, causing them to shrink in size, and they may not fully support the entire bush, especially when it has set a full crop," Stafne said.

The majority of blueberry farms in Mississippi are small-scale operations. The 2022 U.S. Census of Agriculture reports Mississippi has 493 blueberry farms with just under 1,000 acres in production.

Elizabeth Canales Medina, an MSU Extension agricultural economist, said in a regular year, blueberry production in the state is valued at about \$13 million.

"Despite the challenges facing the industry, Mississippi growers can take advantage of significant market

opportunities," Medina said.

Blueberry farms that remain commercially successful must continue to adapt to current market demands, and there may be a shift to adopt new, improved blueberry varieties.

"This would require investment like any other business, along with careful consideration and long-term planning," Medina said.

With all these challenges, Stafne said many blueberry growers are looking to explore other crop options such as pecans, blackberries, grapes, tea and muscadines.

But for those wanting to stay in the blueberry business, Stafne said the state's commercial blueberry industry is capable of making the next set of changes necessary to be competitive.

Those selling wholesale blueberries must manage the labor market which is expensive and difficult. While many farms still pick blueberries by hand, machine harvesters are becoming more common.

"The challenge is to avoid bruising the fruit, which leads to lower fruit quality and a shorter shelf life," Stafne said. "Some improvements can be made on the machine side and some with variety selection. If these problems associated with machine harvest can be mitigated, then we will probably see much more of that type of harvesting in the future."

MSU provides a variety of support to the fruit industry in the state through workshops and short courses, the establishment of best management practices and integrated pest management recommendations, in addition to in-person assistance from specialists. Learn more at extension.msstate.edu/agriculture/crops/fruit.



Andy Gipson
Commissioner

Mississippi Department of
Agriculture & Commerce
121 North Jefferson Street
Jackson, MS 39201
Phone: 601-359-1100
www.mdac.ms.gov

Ag Museum
601-432-4500

Agricultural Theft Bureau
1-800-678-2660

Aquaculture
601-359-1102

Board of Animal Health
601-359-1170

Bureau of Plant Industry
662-325-3390

Consumer Protection
601-359-1148

Fairgrounds/Coliseum
601-961-4000

Genuine MS
601-359-1159

International Trade
601-359-1196

Keep Mississippi Beautiful
601-359-1100

Livestock Market News
601-359-1159

Market Development
601-359-1159

Meat Inspection
601-359-1191

Mississippi Market Bulletin
601-359-1155

Mississippi Farmers Market
601-354-6573

Regulatory Services
601-359-1111

Petroleum Division
601-359-1101

Produce Safety
601-359-1104

Weights & Measures
601-359-1149

Commissioner's Policy Corner

Feeding the Economy Annual Report Details Mississippi's Agricultural Impact

By Emma Dotson
Public Relations Specialist - MDAC

The 2024 Feeding the Economy report was recently released detailing the significant impact of America's food and agriculture sector to the economy, including a total economic output of \$80.5 billion in the state of Mississippi. The report's findings show America's food and agriculture sector as a thriving, integral component of the U.S. economy with economic output growing by more than a trillion dollars since the 2023 report.

"Agriculture is an economic driver for Mississippi, and it is the backbone of the economies for small communities across the state. The Feeding the

Economy report highlights the significant economic impact of Mississippi's agriculture industry, including its economic contributions to other sectors of the food supply chain," said Commissioner of Agriculture and Commerce Andy Gipson. "The numbers are quite impressive and show the importance of our continued efforts to create new market opportunities for agricultural products and grow the agricultural economy even more."

The study highlights Mississippi's strong agriculture industry, which provides 429,077 total jobs with 217,895 being direct-related jobs. Additionally, the industry accounts for \$7.16 billion paid in direct wages

and \$18.18 billion in total wages. More than \$1.02 billion of agricultural goods were exported from Mississippi ports. Overall, the food and agriculture industries resulted in a direct output of \$34.15 billion and a total output of \$80.5 billion.

The 2024 Food and Agriculture Industries Economic Impact Study estimates the economic contributions made by the food industry to the U.S. economy. For the study, the food industry includes any business involved in food agriculture, food manufacturing, food wholesaling and food retailing. The study measures the number of jobs in food and agriculture related industries, the wages paid to employees, the value added and total output.



Andy Gipson
Commissioner

In addition, the report measures the economic impact of the suppliers that support the food and agriculture industries, as well as those industries supported by the induced spending of direct and supplier industries.



U.S. FOOD AND AG INDUSTRIES

The 2024 Feeding the Economy report shows that America's food and agriculture sector is a thriving, integral component of the U.S. economy with economic output growing by more than a trillion dollars since the 2023 report. These industries directly support nearly 24 million jobs (over 15% of U.S. employment) and are responsible for more than \$9.6 trillion of the country's economic activity – that's 20% of total U.S. output.

It begins in the rich soil of America's farms and ranches – nearly two million of them – spread across the heartland and stretching to the coasts, covering two out of every five American acres.

Meanwhile, millions of food scientists, production workers, logistics experts, truck drivers, and engineers work in more than 200,000 food manufacturing, processing, and storage facilities to keep our food supply chains strong and fresh, safe food readily available worldwide.

Mississippi

● Total Jobs 429,077	● Total Wages \$18.18 Billion	● Total Output \$80.50 Billion
● Direct Jobs 217,895	● Direct Wages \$7.16 Billion	● Direct Output \$34.15 Billion
● Business Taxes \$7.82 Billion	● Exports \$1.02 Billion	

United States

● Total Jobs 48,665,609	● Total Wages \$2.77 Trillion	● Total Output \$9.63 Trillion
● Direct Jobs 23,873,247	● Direct Wages \$990.75 Billion	● Direct Output \$3.82 Trillion
● Business Taxes \$1.25 Trillion	● Exports \$181.36 Billion	

To measure the total economic impact of the food and ag industries, the analysis includes the direct and indirect economic activity surrounding these industries, capturing both upstream and downstream activity. For example, when a farm equipment retailer hires new employees because farmers are buying more tractors, experts consider the new salaries an indirect impact. Similarly, when a retail associate spends her paycheck, an induced economic impact occurs.



From Our Kitchen To Yours

It's The Ripe Time For Blueberries!!



Blueberry Angel Dessert

- 1 package (8 ounces) cream cheese, softened
- 1 cup confectioners' sugar
- 1 carton (8 ounces) frozen whipped topping, thawed
- 1 prepared angel food cake (8 to 10 ounces), cut into 1-inch cubes
- 2 cans (21 ounces each) blueberry pie filling

In a large bowl, beat cream cheese and confectioners' sugar until smooth; fold in whipped topping and cake cubes. Spread evenly into an ungreased 13x9-in. dish; top with pie filling. Refrigerate, covered, at least 2 hours before serving. *Source: www.tasteofhome.com.*

Blueberry Cream Muffins

- 4 large eggs
- 2 cups sugar
- 1 cup canola oil
- 1 teaspoon vanilla extract
- 4 cups all-purpose flour
- 1 teaspoon salt
- 1 teaspoon baking soda
- 2 teaspoons baking powder
- 2 cups sour cream
- 2 cups fresh blueberries

Preheat oven to 400°. In a bowl, beat eggs. Gradually add sugar. While beating, slowly pour in oil; add va-

nilla. Combine the next 4 ingredients; add alternately with the sour cream to the egg mixture. Gently fold in blueberries. Fill 24 greased muffin cups three-fourths full. Bake until a toothpick inserted in center comes out clean, 18-20 minutes. Cool 5 minutes before removing from pans to wire racks. *Source: www.tasteofhome.com.*

Blueberry Crumble

- Filling:
- 6 1/2 cups frozen blueberries
 - 1/3 cup brown sugar
 - 1 teaspoon lemon zest
- Crumble Topping:
- 1 1/4 cups brown sugar
 - 3/4 cup all-purpose flour
 - 1/2 cup rolled oats
 - 6 tablespoons unsalted butter, room temperature and cut into chunks
 - 1/2 teaspoon ground cinnamon
 - 1/4 teaspoon salt
 - 1 pinch ground nutmeg

Preheat the oven to 375 degrees F (190 degrees C). Grease a baking dish. Make filling: Combine blueberries, brown sugar, and lemon zest in a large bowl. Pour filling into the prepared baking dish. Make topping: Combine brown sugar, flour, oats, butter, cinnamon, salt, and nutmeg in a medium bowl; rub mixture between your fingers until crumbly. Sprinkle topping

evenly over blueberries. Bake in the preheated oven until crumble is lightly browned and bubbly, 40 to 45 minutes. Serve warm. *Source: www.allrecipes.com.*

Blueberry Cookies

- 2 1/2 cups all-purpose flour
- 2 teaspoons baking powder
- 1 pinch salt
- 1 cup white sugar
- 1/2 cup butter
- 2 large eggs, beaten
- 1/2 teaspoon lemon extract
- 1/2 cup milk
- 1 cup fresh blueberries

Preheat the oven to 375 degrees F (190 degrees C). Grease cookie sheets. Sift flour, baking powder, and salt together. Beat sugar and butter together in a large bowl with an electric mixer until lighter in color. Beat in eggs and lemon extract. Mix in milk and flour mixture alternately in three parts, starting with the milk. Gently mix in blueberries. Drop batter by tablespoons onto prepared sheets 1 1/2 inches apart. Bake cookies in the preheated oven until edges are golden brown, about 12 to 15 minutes. *Source: www.allrecipes.com.*



Mississippi Farmers Market

Open year-round Saturdays: 8:00am - 1:00 pm

Produce

- Radish - Rutabagas
- Spinach - Pumpkin - Muzuna
- Bok Choy - Celery - Asparagus
- Salad Mix - Butternut Squash
- Spring Onion - Artichoke
- Black Garlic - Snow Peas
- Kentucky Wonder - Eggplant
- Zucchini - Bell Peppers
- Cucumbers - Brussel Sprouts
- White Potato - Sweet Potato

Starter Plants

- Blueberry Bushes
- Mayhaw Trees - Southern Red
- Maple Trees - Little Gem
- Magnolia - Sweet William
- Gardenia - Star Jasmine
- Fig Trees - Forsythia - Hosta
- Daylilies - Sweet Viburnum
- Native Azalea

Goods & Services

- Eggs - Jams - Jellies - Pickles
- Milk - Coffee - Honey - Cheese
- Chicken - Beef
- Freshly Baked Breads
- Cookies - Pastries - Croissants
- Homemade Apple & Peach
- Turnovers - Cut Flowers



929 High Street | Jackson, MS | 601-354-6573 | www.msfarmermarket.com



Advertisers Index

Category	Page No.
Ag Trailers & Carts	9
Antiques & Furniture	7
Aquaculture	12
ATVs & UTVs	11
Barrel Races & Ropings	16
Beef Cattle	12
Beekeeping, Honey & Syrup	4
Boats & Accessories	11
Camping & Accessories	11
Construction Equipment	10
Crafts & Woodwork	7
Crops & Seeds	4
Cutters & Mowers	8
Dairy Cattle	13
Dogs	14
Dogs at Stud	14
Dog Handling & Supplies	15
Employment	6
Equipment Auctions	15
Farm Buildings & Materials	5
Farm Market Report	17
Farm Property	4
Field Equipment	8
Fireplace Inserts/Firewood	7
Fishing Tackle	11
Flowers & Trees	4
Forestry & Logging	10
Fruits & Vegetables	4
Goats & Sheep	13
Gourds	7
Graders & Blades	9
Grain Storage & Equipment	9
Grass-Fed Meats	13
Ground Cover & Mulch	4
Guns & Accessories	12
Hay & Forage Equipment	9
Hay & Grain	4
Horses & Mules	13
Hunting, Fishing, Camping	11
Hunting Leases/Memberships	12
Industrial Trucks & Vans	10
Irrigation Equipment	9
Lawn & Garden Equipment	10
Livestock Auctions & Sales	16
Livestock Boarding & Handling	6
Livestock Equipment	11
Livestock Slaughter	13
Livestock Tack	11
Livestock Trailers & Wagons	11
Loaders & Attachments	9
Lumber & Sawing	5
Miscellaneous Equipment	11
Miscellaneous Hunting Items	12
Miscellaneous Home Items	7
Musical Instruments	7
Other Ag Implements	9
Outdoor Power Equipment	10
Pickers & Harvesters	9
Planting & Tillage	9
Posts & Fencing	5
Poultry & Fowl	7
Poultry Equipment	11
Rabbits	13
Rural Property & Hobby Farms	4
Sewing & Fabrics	7
Sprayers & Spreaders	9
SUVs & Vans	10
Swap & Exchange	6
Swine	13
Timber Price Report	17
Tools & Hardware	10
Tractors	8
Trucks	9
Trailers (Utility/Equipment)	9
Upcoming Events	18
Upcoming Livestock Shows	16
Vegetable & Produce Supplies	4
Want Ads	5

FARM
PROPERTY

All farm property listings within this category (for sale or rent/lease) must consist of **10 acres or more**.
Out-of-state residents owning farm property within Mississippi that is being offered for sale are allowed to advertise in this category.
No real-estate agents, businesses, brokers or dealers that sell land on a commission basis are eligible to advertise.

COPIAH COUNTY

10 acres with some timber, utilities available, Hwy. 18 road frontage, approx. 10 miles west of I-59, \$45,000. Georgetown, 601-967-9201.

JASPER COUNTY

45 +/- acres, CR 27 road frontage, water/electricity, fenced on 3 sides, approx. 40 acres mature pine/hardwood mix, house sites, deer/turkey, food plot, \$147,000. Laurel, 601-319-5907.

JONES COUNTY

86 acres wooded with creek at one end & excellent plot boarding county road with frontage for few more home sites to sell, \$380,000. Ellisville, 601-422-9305.

WARREN COUNTY

150 acres of Sunflower River Levee pasture land located off Hwy. 61 North, 2 miles long, gaps, fencing, water, no deer hunting woods, pasture land only, \$1,750/acre. Vicksburg, 601-876-7523.

WEBSTER COUNTY

155 acres, great deer/turkey hunting, \$2,950 per acre. Redwood, 601-218-5060.

WINSTON COUNTY

29 acres, on blacktop road, 3 miles from Louisville, \$2,500 per acre. Louisville, 253-678-1080.

WINSTON COUNTY

80 acres, half a quarter section, loblolly 16 years old, hardwood perimeter, survey marks, private road off highway, family owned since 1953, serious inquiries only, \$155,000. Noxapater, 601-260-0117.

Visit us online at

www.msmarketbulletin.org

FARM LAND FOR
RENT OR LEASE

Rankin Co., 15 acre horse facility, includes home, 6 stall barn, covered riding pen, 60x40' building & hay barn, can be divided, residential or commercial, \$620 OBO. Pearl, 601-214-5585.

RURAL PROPERTY
& HOBBY FARMS

All property listings within this category (for sale or rent/lease) must consist of less than 10 acres.
Out-of-state residents owning property within Mississippi that is being offered for sale are allowed to advertise in this category.
No real-estate agents, businesses, brokers or dealers that sell land on a commission basis are eligible to advertise.

CARROLL COUNTY

1.18 acres, 3/2 brick home, peaceful, nature, hunting, garden & more, few minutes from shopping/restaurants, between BlackHawk & Hwy. 82 off Hwy. 17, \$50,000 OBO. Carrollton, 662-374-3468.

CROPS & SEEDS

All items listed in this category must be agriculture related.
No commercial, dealers, buyers, sellers or business person engaged in trade are allowed to advertise.
Only in-state residents are allowed to advertise within this category.

BERRY PLANTS

Amber Blueberry Farm has blueberry plants for fall planting, several varieties available, 1 gal. \$3 each, 3 gal. \$12 each. Wayne Co., Waynesboro, 601-735-4840 or 601-381-2914.

FRESH VEGETABLES,
PLANTS & SEEDS

Black Crowder pea seed, \$5/lb., you pay shipping. Pike Co., Summit, 601-810-8415.

FRESH VEGETABLES,
PLANTS & SEEDS

Vegetable plants cole crop, \$3.50; A 6-pack tomato, pepper, watermelon etc., \$5 per 6-pack, buy 5 get 1 free, no phone, Sam Hostetler, 1007 Topsy Road, Randolph, MS 38864. Pontotoc County.

FRUITS, NUTS
& BERRIES

Black walnuts, \$3 for 5 gal. bucket or \$5 for 2- 5 gal. buckets. Tishomingo Co., Iuka, 662-279-6691.

FRUITS, NUTS
& BERRIES

Pecans, 50¢ per lb., some good, some bad. Stone Co., Wiggins, 601-928-8110.

VEGETABLE &
PRODUCE SUPPLIES

Bean sticks, square hardwood sticks 7' 6", 60¢ each, cash only. Newton Co., Union, 601-416-2005.

VEGETABLE &
PRODUCE SUPPLIES

Black plastic 25 gal. tubs, snap-on lids, very good cond., \$20 each. Holmes Co., Durant, 601-503-7334.

FLOWERS,
BULBS & SEEDS

Resurrection lilies, Surprise lilies, bulbs are huge, blooming size, local pickup or shipping available, \$2.50. Clay Co., Pheba, 662-341-0970.

FLOWERS,
BULBS & SEEDS

Rose of Sharon's, Hydrangeas, Weigela's, Gardenia, Angel Trumpets & more, \$3-\$7, come take a look at Matt & Robin's Backyard Gardening. Walthall Co., Tylertown, 504-388-8273.

FLOWERS,
BULBS & SEEDS

Daylilies, assorted colors, \$2 per plant, plus \$12 shipping on first 20 plants, bonus plants shipped each order. Reddis Nash, 1483 Hwy. 51 North, Winona, MS 38967. Montgomery Co., 662-283-5361.

TREES,
VINES & SHRUBS

Catalpa trees, 3' - 4' tall, in 1 gal. pots with Miracle Grow potting soil, \$5. Lincoln Co., Brookhaven, 601-754-7801.

TREES,
VINES & SHRUBS

Everything Catalpa, potted trees, seed, live & frozen worms, pupa & books, \$10, text or visit my Facebook page Catalpa Gold & send private message. Madison Co., Flora, 601-622-0412.

TREES,
VINES & SHRUBS

Vitex Chaste trees available & fig trees, \$3-\$8, come take a look at Matt & Robin's Backyard Gardening. Walthall Co., Tylertown, 504-388-8273.

BEEKEEPING,
HONEY & SYRUP

5 frame nucs, \$175; Top feeders, \$35; Telescopic tops, \$15; Wooden nuc boxes, complete \$40, body only \$30. Quitman Co., Vance, 662-874-7882.

BEEKEEPING,
HONEY & SYRUP

5 frame nucs with Italian queens, \$150, contact for pricing on large quantities. Joe Parker, Smith Co., Taylorsville, 601-466-9294.

BEEKEEPING,
HONEY & SYRUP

Spring 2024 pre-sale, complete hives with bees, \$318; 5 frame medium nucs, \$190; VSH x Mite Mauler queens, \$50, order at www.buttbees.com, contact for cash sales. Jackson Co., Gautier, 228-623-3396.

BEEKEEPING,
HONEY & SYRUP

Honey bees in complete pine or polystyrene hives or nucs, new & used equipment, multiple selections, \$200-\$500 cash & pickup only. Jones Co., Overtt, 601-577-5142, ask for Sylvia.

CYPRESS & PINE BEE EQUIPMENT

Cypress & pine bee equipment, professional made tops, bottom board, frames & all accessories, pine hive bodies \$21, cypress \$29, we ship. Rankin Co., Star, 601-540-1185.

CYPRESS & PINE BEE EQUIPMENT

Sorghum molasses, \$6 per pint, \$11 per quart, case quantity & price available, no phone, contact Jacob Gingerich, 4565 Salmon Road, Randolph, MS 38864. Pontotoc County.

GRASS SEEDS
& CUSTOM SPRIGGING

Custom sprigging, Sumrall 007 (registered trademark), Tifton 44, Tifton 85 also available, \$150/acre (10 acre minimum), sprigs available \$2.50/bushel. Billy & Gerald Sumrall, Lawrence Co., Monticello, 601-587-7122.

GRASS SEEDS
& CUSTOM SPRIGGING

Custom sprigging, Dixie Bermudagrass with guaranteed stand on 15" spacing, 20 acre minimum, \$450/acre, MS, AK, TN, LA, TX. Larry McDonald, Leake Co., Carthage, 601-780-0781, call or text.

GRASS SEEDS
& CUSTOM SPRIGGING

Custom sprigging, Tifton 44 & 85, Alicia, Dixie, with conditional guarantee, 30 years experience, starting at \$150/acre, 20 acre minimum, conventional or no-till. Leake Co., Carthage, 601-389-7927.

HAY & GRAIN

Square bales of Coastal bermudagrass hay, \$10. Hinds Co., Terry, 601-622-8581.

HAY & GRAIN

Bermudagrass square bales, \$12; Round bales horse quality, \$70, fertilized, in barn, delivery available. Simpson Co., Magee, 601-506-2455.

HAY & GRAIN

ANIPRO liquid feed, 25% protein, 5% fat, with limiter, \$2.85/gallon; ANIPRO calf receiver, 10% protein, \$2.60/gallon, feed cost 35¢ per day per head. Hancock Co., Kiln, 228-216-8731.

GROUND COVER,
MULCH & FERTILIZERS

25- 30 gal. bags of premium pine straw, \$10 each, pickup or local delivery only. Walthall Co., Tylertown, 601-781-5769, text.

GROUND COVER,
MULCH & FERTILIZERS

Gin trash, feed tub full, price includes feed tub, \$20. Hinds Co., Raymond, 601-955-1282.

GROUND COVER,
MULCH & FERTILIZERS

Spread chicken litter on your farm with 16' spreader body, \$300 & up depending on distance & location. Marion Co., Columbia, 601-441-2145.

GROUND COVER,
MULCH & FERTILIZERS

Ag lime, \$32 per ton. Brent Duncan, Walthall Co., Tylertown, 985-515-6655.

FARM BUILDINGS
& MATERIALS

All items listed in this category must be farm/agriculture related. All items must be offered for sale or their services offered by persons in Mississippi actually engaged in agricultural work. No commercial, dealers, buyers, sellers or business person engaged in trade are allowed to advertise. Only in-state residents are allowed to advertise within this category.

LUMBER FOR SALE
& CUSTOM SAWING

Wood-Mizer rough cut pine lumber, all sizes cut to your needs, 75¢ per BF, can saw your logs at my location 35¢ BF. Leake Co., Carthage, 601-507-6320.

Wood-Mizer sawed pine lumber, 2x4, 2x6, 2x8, lengths from 10'-16', 4x4x14', 75¢ per BF. Copiah Co., Georgetown, 601-832-8838.

470 sq. ft. 80 year old oak flooring in good cond., came from old church, \$350 OBO; 7- 1"x6"x16" clear pine boards, \$19 each. Jones Co., Seminary, 601-433-1131.

1x6 #2 white pine, V/G & beaded, \$1 LF; Cypress beveled siding starting at 95¢ LF; Cypress lumber starting at \$1.50 BF. Pike Co., McComb, 601-431-5384.

Cedar lumber, 1x6-8x10' long, \$1.20 BF & up. Simpson Co., Mendenhall, 334-648-1937.

1"x12"x10' select rough sawn Southern Yellow Pine, excellent for indoor/outdoor rustic appearance, 2", 3", 4" x 10' live edge red oak, prices range from \$200-\$800. Hinds Co., Raymond, 601-529-5300.

Cypress lumber in all sizes, cypress posts & timbers as well, cypress siding & V-groove available, buy mill rough or planed, cypress 8"x8"x10' post \$185. Rankin Co., Star, 601-540-1185.

100 Wood-Mizer sawed pine 1x12x10, \$10.50 each; 30- 1x12x16, \$17 each; 100- 1x10x10, \$8.50 each; 100- 1x8x10, \$7 each. Simpson Co., Mendenhall, 601-259-8957.

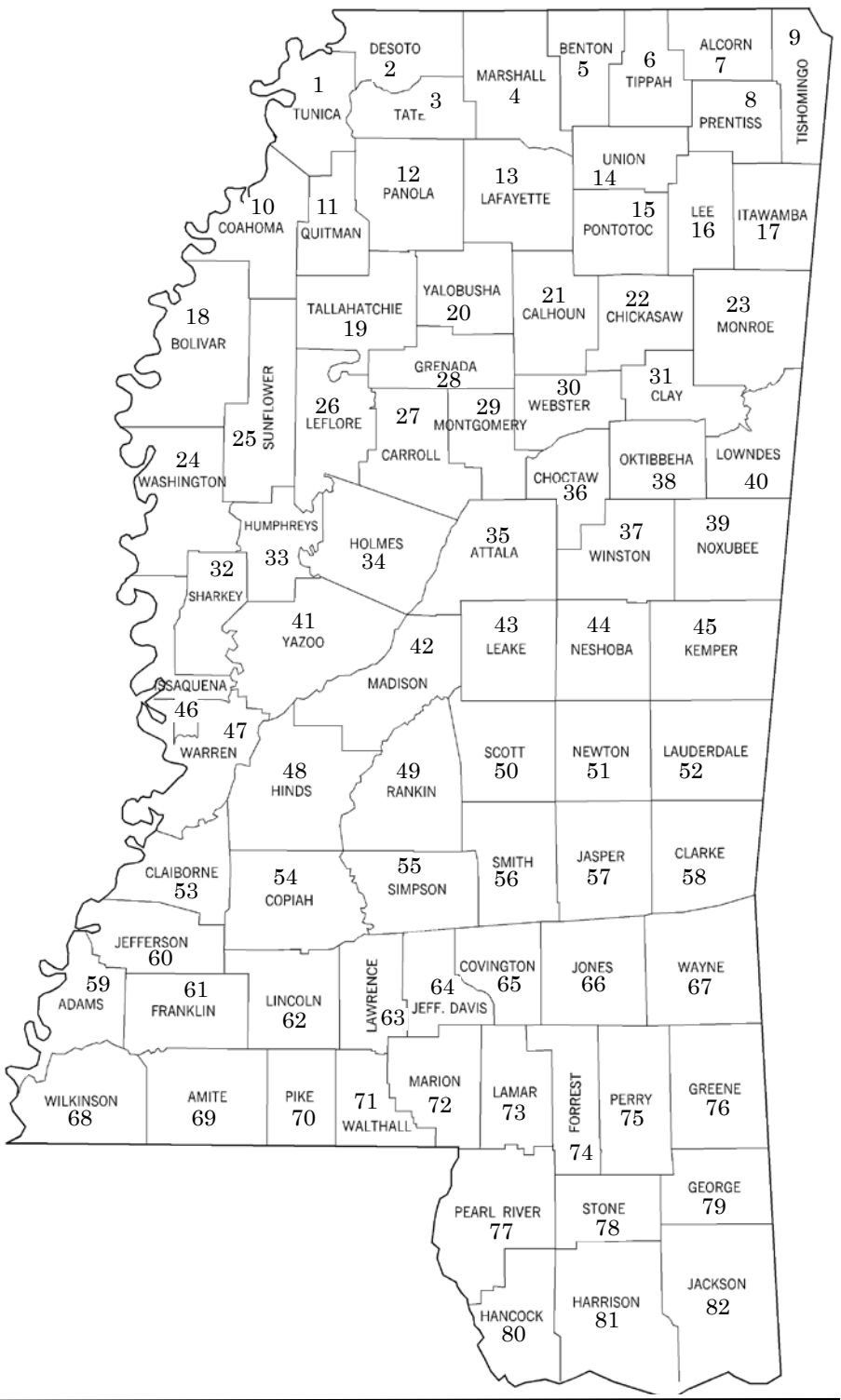
Wood-Mizer rough cut lumber, 1" & 2" pine, 75¢ BF; 1" oak, \$1 BF, various lengths. Kemper Co., Dekalb, 601-743-2239.

Formans Portable Sawmill Service, I have a Wood-Mizer LT70 & have been sawing 2005, will be glad to discuss sawing for you. Franklin Co., Meadville, 601-384-6727.

Sharpening, clean, inspect, set & sharpen bandsaw blades for saw-mills, \$10; Sharpen planer blades up

Use this map to assist you in locating the towns and counties of buyers and sellers listed in the Mississippi Market Bulletin. The corresponding numbers on the map are listed left to right - top to bottom.

Adams	59	Leflore	26
Alcorn	7	Lincoln	62
Amite	69	Lowndes	40
Attala	35	Madison	42
Benton	5	Marion	72
Bolivar	18	Marshall	4
Calhoun	21	Monroe	23
Carroll	27	Montgomery	29
Chickasaw	22	Neshoba	44
Choctaw	36	Newton	51
Claiborne	53	Noxubee	39
Clarke	58	Oktibbeha	38
Clay	31	Panola	12
Coahoma	10	Pearl River	77
Copiah	54	Perry	75
Covington	65	Pike	70
DeSoto	2	Pontotoc	15
Forrest	74	Prentiss	8
Franklin	61	Quitman	11
George	79	Rankin	49
Greene	76	Scott	50
Grenada	28	Sharkey	32
Hancock	80	Simpson	55
Harrison	81	Smith	56
Hinds	48	Stone	78
Holmes	34	Sunflower	25
Humphreys	33	Tallahatchie	19
Issaquena	46	Tate	3
Itawamba	17	Tippah	6
Jackson	82	Tishomingo	9
Jasper	57	Tunica	1
Jefferson	60	Union	14
Jefferson Davis	64	Walthall	71
Jones	66	Warren	47
Kemper	45	Washington	24
Lafayette	13	Wayne	67
Lamar	73	Webster	30
Lauderdale	52	Wilkinson	68
Lawrence	63	Winston	37
Leake	43	Yalobusha	20
Lee	16	Yazoo	41



to 20", \$5 per edge. George Co., Lucedale, 228-990-8262.

2 year old, never used, ROP wood-mill, comes with 10 extra blades, \$3,000. Pike Co., Summit, 601-248-8918.

POSTS & FENCING

Cedar posts, \$1 & up; 8' cedar split rails, \$5.50; 10' cedar split rails, \$6.50. Lauderdale Co., Meridian, 601-681-4495.

2 3/8" structural tubing, \$55/joint; 2 7/8" structural tubing, \$60/joint; 7/8" structural rods, \$25/joint; 4" structural drill pipe, \$250/joint; Cas-ing, \$300/joint. Adams Co., Natchez, 601-807-1000.

Fencing: 2x4, 4' hog wire, 150', T-posts, gate & gate posts, \$200; 1x4 4' deck or fence boards, also 6', 10¢ per foot. Pearl River Co., Carriere, 504-430-1437.

Several hundred feet of rolled up Red Brand barbed wire, \$75; Several feet of 4' chain link fence wire, \$50. Rankin Co., Pearl, 601-613-0761.

4 rolls of 3' fence wire, 1x2 inch mesh, was used to keep rabbits out of garden, can send pictures, \$50. Lauderdale Co., Meridian, 601-938-2786.

Livestock fence building to any specs needed, fence prep (spraying & clearing) also available, call/leave message to discuss your needs. Calhoun Co., Calhoun City, 662-637-7478.

FARM BUILDINGS
& MATERIALS

21 sheets of 12" x 150" vinyl vented soffit, almond/pebble in color, no painting needed, \$200. Newton Co., Decatur, 601-938-6692.

Ridge cap, 10' long, \$15 each; Rusty tin, 20' x 3' wide, \$20 per sheet;

40' used steel truss, \$275, cash only. Smith Co., Mt. Olive, 601-382-0091.

New pull-down attic staircase, works for 8' or 9' ceilings, \$185; Used attic care, free. Rankin Co., Brandon, 601-260-3146.

I-beams & I-channels, different sizes & lengths, will throw in 2-ton electric hoist if all taken, \$1,500. Attala Co., Ethel, 601-416-6447.

5- 4" x 4" x 1/4" x 20' steel tubing, slight surface rust, paid \$950 each, asking \$2,500. Carroll Co., Cruger, 662-816-1188, text.

20' shipping container, wind & water tight, good cond., have 2 available, \$2,500 each. Greene Co., Richton, 601-394-9281.

40' steel shipping CONEX available for sale in Brandon area, \$3,000, can deliver if needed, price will change if delivered. Rankin Co., Brandon, 601-398-5812.

2 grain silos, some rust on tops, sides are excellent shape, \$100 each OBO, you move. Newton Co., Lake, 769-274-2789, call between 5:30 - 7:30 p.m. weekly, anytime on weekends.

Pole barns, metal buildings, pads, concrete, etc., call or text for your next project. Rankin Co., Pelahatchie, 769-798-3480.

WANT ADS

All items listed under the this category must be agricultural related. Out-of-state residents are allowed to advertise in this category.

CROPS &
SEEDS WANTED

Running Baby Lima butterbean seeds or any small green running butterbean seeds, no bush. Lincoln Co., Brookhaven, 601-835-7428.

MISSISSIPPI
MARKET BULLETIN

EDITOR

Claude Nash
Claude@mdac.ms.gov
601-359-1123

ASSISTANT EDITOR

Hannah East
HannahE@mdac.ms.gov
601-359-1179

CIRCULATION

Jessica Bullock
Jessica@mdac.ms.gov
601-359-1159

MAILING ADDRESS

P. O. Box 1118
Jackson, MS 39215-1118

PHONE

601-359-1155

FAX

601-359-1260

WEBSITE

www.msmarketbulletin.org

E-MAIL

marketbulletin@mdac.ms.gov

Mississippi Market Bulletin
(USPS 354-340)

Published semi-monthly by the
Mississippi Department
of Agriculture and Commerce
121 North Jefferson Street
Jackson, MS 39201

Periodical postage paid at Jackson, MS,
and at additional mailing office. Pre-
sented as a service feature by this
Department as authorized by Law,
Subscriptions are \$10.00 per year to
bona fide residents of Mississippi,
however advertisers must be actually
engaged in farm or agricultural pursuits.
Dealers, buyers, sellers and business
persons engaged in trade cannot list
items for sale.

All matters dealing with the purpose
of this publication should be addressed
to Claude Nash, Editor. All matters of
policy and subjects not dealing with the
publication should be addressed to the
Commissioner.

In offering this public service to bona
fide residents of Mississippi, we can-
not verify the contents of each notice.
Therefore, the availability of these pages
for listings of agricultural related items
constitutes no warranty on our part of
any statement made by parties to such
proposed transactions.

The Mississippi Market Bulletin
assumes no responsibility for any
notice appearing in the Bulletin nor for
any transaction resulting from published
notices.

Advertisers are cautioned that it is
against the law to misrepresent any
product offered for sale in public
notice or advertisement carried in any
publication that is delivered.

POSTMASTER send address changes
to: Mississippi Market Bulletin, P. O. Box
1118 Jackson, MS 39215 (DMM 455.2i).

DOGS WANTED

Very small puppy, don't have to be
registered, nothing special, just a tiny
lap puppy that I can hold in my lap
& love.Carroll Co., Carrollton, 662-
453-7621 or 662-385-5393.

LIVESTOCK WANTED

In search of young draft horses, colts
or yearlings preferred, reasonable
distance from Calhoun Co., Calhoun
City, 662-628-0774, text or leave
message.

EQUIPMENT TRAILERS
& WAGONS WANTED

Single or dual axle cargo trailer in
good cond., in Jones or adjoining
counties. Jones Co., Laurel, 601-651-
1947.

FIELD EQUIPMENT
& PARTS WANTED

14' JD HX14 rotary cutter, working
or parts. Stone Co., Perkinston, 601-
928-7617.

2- 13.6 x 28 tires. Pike Co., McComb,
601-248-5331.

JD 4050 or JD 4055 tractor with cab
& MFWD, could use loader also.
Pleasureville, KY, 502-550-4080.

11.2 x 24 front tires, need 2; 16.9 x
28 rear tires for JD 5300 tractor, need
1. Pike Co., Summit, 601-248-8843.

Field equipment for IH Cub tractor.
Jones Co., Ellisville, 601-577-0599.

JD 4050 or 4055 tractor with cab/air,
4WD. Pleasureville, KY, 502-550-
4080.

HAY & FORAGE
EQUIPMENT WANTED

Good hay cutter & fluffer, buy or
trade. Marion Co., Columbia, 601-
441-2145.

LAWN & GARDEN
EQUIPMENT WANTED

John Deere X-340 riding mower,
complete hood or mower. Yalobusha
Co., Water Valley, 662-836-7323.

TRUCKS, PARTS &
ACCESSORIES WANTED

1977 Ford SWB pickup to restore or
fix up, I sold one in the Mississippi
Market Bulletin in 1992. Madison
Co., Ridgeland, 601-624-7387.

Wheelchair van. Neshoba Co., Phila-
delphia, 601-416-9517.

1989-1994 Toyota ext. cab 4WD truck,
dead or alive. Jones Co., Ellisville,
601-466-4613.

POSTS &
FENCING WANTED

Barbed wire, net wire, T-post, wood
post. Noxubee Co., Macon, 662-549-
3001, call/text/leave message.

PROPERTY WANTED

Responsible senior adult seeks 100-
300 acres for hunting lease in NW
MS. Marshall Co., Lamar, 662-588-
8944, leave message.

Responsible & experienced hunter
seeking turkey hunting lease in cen-
tral MS. Madison Co., Gluckstadt,
601-331-2110.

Lease or purchase 100-300 acres
within 1 hour drive of Canton for
hunting/recreation. Madison Co.,
Madison, 601-668-9326.

Looking for tracts of timber to cut
& haul to the mill, specializing in
smaller tracts. Hinds Co., Terry, 601-
622-8581.

Buy 20-60 +/- acres pasture land on
Hwy. 15 North or close to, from Man-
tee or Walnut. Mark Gill, Albany,
LA, 985-514-4925.

Running Walker Foxhounds straight
on bobcat, will not harm anything but
bobcats, need 3,000+ acres cutover
to hunt anywhere in Southeast. Louis
Skinner, Neshoba Co., Union, 601-
774-5256.

Need property for growing hay in
Jefferson or Marion Co., Columbia,
601-441-2145.

HUNTING, FISHING &
CAMPING WANTED

Winchester SX-1 12 ga., full choke,
Remington model 7 any caliber,
Remington model 600 any caliber.
Greene Co., Richton, 601-394-9840.

Looking for a good beginners rifle.
Noxubee Co., Macon, 662-549-3001,
call/text/leave message.

38 S&W model 60 2" barrel, also 357
S&W model 60 2 1/2" barrel, stain-
less revolvers; 22 Ruger with 10" or
12" barrel revolver. Mark Gill, Al-
bany, LA, 985-514-4925.

Older bolt action Remington model
Seven rifles, any caliber or condition
considered, also looking for wooden
model Seven stock only. Clarke Co.,
Quitman, 601-513-2912.

MISCELLANEOUS
FARM WANTS

Old little girls dress patterns, sizes
2-4-6. Yazoo Co., Yazoo City, 662-
538-7425.

EMPLOYMENT

Advertisements are accepted for ag-
ricultural work only. We do not ac-
cept advertisements for housework,
nursing or companionship needs.
Only in-state residents are allowed
to advertise within this category.

FARM HELP WANTED

Looking for dependable logger to
clear cut hardwood timber in Mar-
shall Co., Olive Branch, 901-494-
0216.

FARM WORK WANTED

Affordable tractor services, which in-
clude bush-hogging, disking, tilling,
front end loader & food plot prepa-
ration/planting, in Hinds, Rankin,
Madison & nearby counties. Rankin
Co., Brandon, 601-906-4393.

All kinds of dirt work wanted, have
rotary cutter, dozer, dump truck &
excavator, will do road work, light
clearing, fire lanes, trailer pads, etc.
Jones Co., Laurel, 601-319-2856.

Beaver problems? No problem, I
have years of experience trapping &
dam removal. Clay Co., West Point,
662-418-2493, leave message I will
return your call.

Bulldozer/tractor work, small dump
truck (7 yards) will haul dirt & rocks,
land clearing, driveways, ponds, cul-
vert installation, erosion control. For-
rest Co., Dixie, 601-550-1410.

Bush-hogging, dirt work, front end
loader work, disk your food plots/
garden spots, in Attala, Holmes,
Carroll, Montgomery, Choctaw,
Winston, Leake & North Madison
Counties. Attala Co., French Camp,
662-739-7044.

Chair caning all types, antique res-
toration & repair, see examples of
work at Wilson's Weaving Whittling
& Woodwork on Facebook, send pic-
tures for pricing. Union Co., Myrtle,
662-296-7777.

Dirt work, dozer work, pond re-
pair, pond construction, house pads,
shop pads, duck holes, GPS & la-
ser equipped, demolition, site work,
lakes, ROW, free estimates. Rankin
Co., Brandon, 601-896-2664.

Dozer, excavator, backhoe, tractor &
dump truck, stump grinding, bush-
hog, house pads, driveways, no job
too small, free estimates. Pike Co.,
Jayess, 601-551-7042.

Dozer work, trackhoe work, dump
truck & all types of tractor work, deer
camps, duck holes, home sites, drive-
ways, ponds, roads, R-O-W & pipes
installed. Tallahatchie Co., Charles-
ton, 662-458-4021.

Dozer/excavator work, pond/lake
construction & repair, house pads,
driveways, NRCS erosion structures/
ponds, poultry house pads, GSP/la-

ser grading, bush-hogging, 20 years
experience. Copiah Co., Hazlehurst,
601-668-7780.

Forestry mulching, regain your prop-
erty, underbrush clearing, fire &
shooting lanes, fence row clearing,
statewide, new equipment, add value
to property. Rankin Co., Brandon,
601-278-7735.

Forestry mulching service, no job too
big or too small. Hinds Co., Terry,
601-622-8581.

I'm seeking a position as a property
manager/overseeing hunting lease,
estate, rural lands, farm, manage
operations, organize coordinating
buildings, ground services & securi-
ty. Pearl River Co., Poplarville, 985-
750-4462.

Sharpening work, large & small
clipper blades, shears, all knives,
small farm equipment & repair of all
animal clippers, small/large jobs ac-
cepted, quick turn around. Amite Co.,
Liberty, 601-657-2277.

Spread chicken litter on your farm
with 16' spreader body, \$300 & up
depending on distance & location.
Marion Co., Columbia, 601-441-
2145.

Stump & tree removal, fully insured,
have dump trucks, bucket trucks,
bobcats, stump grinders, serving
southwest MS for 10 years, any tree,
any stump, gone today. Walthall Co.,
Tylertown, 601-248-9399.

LIVESTOCK
BOARDING & HANDLING

15 acre horse facility, includes home,
6 stall barn, covered riding pen,
60x40' building & hay barn, can be
divided, residential or commercial,
\$620 OBO. Rankin Co., Pearl, 601-
214-5585.

Book on farming Red Deer & Elk,
369 pages, by Jerry C. Haigh, hard-
back, like new, farming red deer or
elk you'll need this book, \$49. Mari-
on Co., Foxworth, 601-736-5057.

SWAP &
EXCHANGE

All items listed in the this category
must be agricultural related. You
must swap and exchange an agricul-
tural item for an agricultural item.
Only in-state residents are allowed
to advertise within this category.

Fenders for JD 4020, swap for flat
top fenders 06, 56, 66 series Inter-
national. Newton Co., Newton, 601-
527-1398.

New Windham Weaponry made in
USA, AR15 223 cal., \$950; New
Windham Weaponry made in USA,
AR10 308 cal., \$1,225, or swap for
45 cal. pistol. Lamar Co., Lumberton,
601-688-5050.

3 new original West German Sig 225 magazines, \$70 each or swap for Sig 226 or 229 9mm magazines. Lawrence Co., Monticello, 601-748-2263.

Great Pyrenees male, 2 years old, all vet shots & heartworm tick & flea regiment, \$777.77 or swap for rifle, shotgun or pistol. Hinds Co., Terry, 601-882-7389.

Henry lever action 22 rifle, new in box, unfired, swap for Brownings, Glocks or other lever action rifles, no cash sales, swap only. Clarke Co., Quitman, 601-513-2912.

POULTRY & FOWL

Any poultry & fowl advertised in this category must be raised on your farm. Individuals who are a dealer, buyer, seller or business person engaged in trade are not allowed to advertise. Only in-state residents are allowed to advertise within this category.

CHICKENS

ISA Brown hens, will start laying in May, \$30. Hinds Co., Raymond, 601-955-1282.

Australorp chicks, black & silver available, \$2.50. Pike Co., Summit, 601-996-9349.

7 Pearl White Leghorn hens, 13 months old, \$15 each; Pearl White Leghorn straight run, \$3-\$5. Winston Co., Louisville, 601-416-6866.

Lots of variety layer type: chicks, pullets, hens & roosters, \$3, \$20, \$15 & \$7, too many to list, your pick, while supplies last. Franklin Co., Meadville, 769-204-0597.

Rhode Island Reds, Buff Orpingtons, Ameraucanas, Jersey Giants & Light Brahmas, NPIP certified, \$4. Jackson Co., Lucedale, 601-770-9360.

Young ISA Brown hens, laying now, \$18/up, some to be sold at Amish Auction April 20th, no phone, contact Dannie Hostetler, 1331 Topsy Road, Randolph, MS 38864. Pontotoc County.

Silver Laced Wyandotte chicks, day old, hatching 4/22/24, Standard Cochins, Blue (BBS) Orpington & Marans also, NPIP PT/AI clean, local pickup only, \$5. Rankin Co., Florence, 601-896-6355, leave voicemail.

Bantam chicks, \$3-\$20 depending on size. Pearl River Co., Poplarville, 601-795-6397.

Straight run chicks: Leghorn/Buff Orpington \$4, Easter Egger \$6, Ameraucana \$8, Silkie \$10, Silkie Showgirls \$12, Ayam Cemani \$25, French Black Copper Marans \$12. Rankin Co., Brandon, 979-318-4764.

Mixed chicks, just hatched, \$3; Laying hens, 1 year old, \$20. Yazoo Co., Sartartia, 662-571-2758.

Silver Laced Wyandottes, out of excellent PB stock, 5 week olds \$10 each, 4 day olds \$5 each. Washington Co., Greenville, 870-853-6969.

Laying hens, eggs, started hens, baby chicks, Bantams & pigeons, \$20. Ron Willett, Madison Co., Flora, 601-622-0412, call or text.

Olive Egger chickens, 3 years old, laying everyday, black color, muffs & peacomb, \$12 each; Olive Egger chicks, all colors, straight run, \$6 each. Clarke Co., Enterprise, 310-628-3505.

Heritage Rhode Island Red & Barred Rock chicks, straight run only, \$4. Covington Co., Seminary, 601-319-3795.

DOMESTIC BIRDS

India Blue peahens, 1 & 2 years old, \$75-\$100 each, free guineas available with every purchase. Forrest Co., Wiggins, 601-928-3875.

Pair - Indian Ring-necks, Blue male & Lilac female, large Macaw cage, 230 lbs., & all their stuff, \$1,000. Jones Co., Hebron, 601-498-4800.

White Indian Fantail pigeons, over 20 birds available due to flock downsizing, \$20, also have guaranteed breeding pairs for \$60/pair. Madison Co., Canton, 601-672-0139.

Pigeons, Rollers & Fantails available, \$10 each. Hinds Co., Terry, 601-421-1871.

Bonded pair of beautiful Blue Quaker parrots, 2 years old, \$500; Pair of Pied Cockatiels, 1 year old, \$200; Pair of Pied doves, \$20. Copiah Co., Hazlehurst, 601-650-2790, email: kharisma@juno.com.

2 Pairs of Green-Cheeked Conures, \$225/pair each; 2 Pairs of Quaker Parrots, \$400/pair each. Madison Co., Madison, 601-856-4730.

GAME BIRDS

Coturnix quail, for eggs or meat, 50+ available, will send pictures & info, \$3. Madison Co., Flora, 662-571-5623, call or text.

Coturnix quail breeders, great colors, laying lots of eggs, 2 years old, \$2.50 each or make me an offer, 200 birds. Clarke Co., Enterprise, 310-628-3505.

Royal Palm turkey poults, \$12 each. Pearl River Co., Poplarville, 601-795-6397.

WATERFOWL

5 Varieties of ducks, \$6-\$30 depending on size; African/Chinese geese goslings, \$15 each. Pearl River Co., Poplarville, 601-795-6397.

EGGS

Farm fresh eggs, \$3/dozen or \$5/18-count. Jackson Co., Lucedale, 601-770-9360.

Rhode Island Red & Barred Rock hatching eggs, \$10/dozen. Covington Co., Seminary, 601-319-3795.

Ring-necked pheasant eggs, \$30/dozen; Duck eggs, variety of breeds, \$12/dozen. Rankin Co., Brandon, 601-540-7282.

FARM HOME MISCELLANEOUS

All items listed in this category must be farm/agriculture related. Dealers, brokers or businesses are not allowed to advertise. Only in-state residents are allowed to advertise within this category.

ANTIQUES & FURNITURE

Medium size old farm bell, \$450. Hinds Co., Terry, 601-882-7389.

Floral hide-a-bed couch queen, \$125; Blue cloth lift chair, \$75; 2 end tables, \$25 each. Smith Co., Morton, 601-537-3364.

Antique cast iron clawfoot bathtub, was refinished 15-20 years ago but never used, has yellowed some, \$400 OBO. Jones Co., Seminary, 601-433-1131.

2 antique French doors, 24" x 80" each, \$50 for both OBO. Washington Co., Leland, 662-347-3556, will return calls.

Antique chifforobe, very heavy, bar for hanging clothes & 1 shelf at the bottom, very good cond., \$450. Yazoo Co., Yazoo City, 662-571-9121.

A tote full of vintage Coke bottles, cups & decorative pillow, 2 have never been opened, sell together, 2 Victorian folding rockers, \$95 each. Rankin Co., Flowood, 601-588-2148.

Antique double bowl farm sink, 66" long, \$375. Marion Co., Columbia, 601-441-8825.

Knives & straight razors, Case, Robeson, Boker & others, \$50 & up; Glassware, antique coffee pots, \$10 & up. George Co., Lucedale, 601-947-4113.

CRAFTS & WOODWORK

Quality martin houses, pole/winch included to raise/lower house for nest checks, 14-hole \$435, 18-hole \$485, no phone, contact Dannie Hostetler, 1331 Topsy Road, Randolph, MS 38864. Pontotoc County.

Straight grained walking staffs of white oak, poplar & ash, \$25 each;

Roux stirrers, \$15; Cheese boards, \$25 & up (made of various woods). Wilkinson Co., Woodville, 601-888-4420.

Chair caning all types, antique restoration & repair, see examples of work at Wilson's Weaving Whittling & Woodwork on Facebook, send pictures for pricing. Union Co., Myrtle, 662-296-7777.

Large selection of woodcrafts including cutting, charcuterie, checker, tic-tac-toe & signature boards, bluebird, duck & bat boxes, rustic picture frames, Lincoln lap stools, etc., \$20-\$230. Hinds Co., Raymond, 601-529-5300.

Cypress swings starting at \$165; Gliders starting at \$325; Cypress rockers starting at \$170. Cypress tables made on order. Pike Co., McComb, 601-431-5384

Porch swings, cypress & poplar, with cup holders, assembled with screws & bolts, \$175 & up, pickup only. Jefferson Davis Co., Bassfield, 601-641-9792.

FIREPLACE INSERTS & HEATERS

Ashley wood burning heater, \$100. Choctaw Co., Mathiston, 662-617-3228.

Natural gas 10,000 BTU heater with thermostat, new, \$200. Pike Co., Summit, 601-341-7874.

FIREWOOD & KINDLING

Firewood, seasoned, split & stacked. Choctaw Co., Mathiston, 662-617-3228.

GOURDS

Multiple variety & sizes of gourds from \$1-\$3. Tishomingo Co., Iuka, 662-279-1814.

Purple martin gourds ready to cut & hang, \$2 each; Huge arts & craft gourds, \$3 each; European starling gourds, painted/ready to hang, \$10 each. Prentiss Co., Booneville, 662-728-7605.

Purple Martin gourds, still time to attract birds, drilled & wired, ready to hang, hard shell, \$6 each, click on your pick www.brownhillfarm.net. George Co., Lucedale, 601-770-0239.

MUSICAL INSTRUMENTS

Viscount BX Player electronic organ, \$500. Smith Co., Morton, 601-537-3364.

Bass guitar, 5 string, Ampeg BA-108 Squier Fender & amplifier, in good cond., \$195. Lauderdale Co., Meridian, 601-678-1692.

Kimball piano, nice, good cond., \$250. Lauderdale Co., Meridian, 601-490-1690.

SEWING & FABRICS

Bed quilts, twin & regular \$70 & up; Queen size, \$90 & up; Baby blankets & quilts, \$10 & up, they make good gifts. Jasper Co., Rose Hill, 601-727-9232.

Sharpening of sewing scissors, pink-ing shears, upholstery scissors, hair dresser/barber scissors & clippers, also repair clippers, \$10 & up depending on length/metal, quick turnaround. Amite Co., Liberty, 601-657-2277.

HOME MEDICAL SUPPLIES

New wheelchair, \$150 negotiable; Tall Rollator, \$125; BD PureWick urine collection system with wicks, \$600 OBO; Shower chair, \$25; Walker, \$35; 2 canes, \$20. Yazoo Co., Bentonla, 662-571-2608.

MISCELLANEOUS HOME ITEMS

LG TV 60" flat screen, 7 years old, \$200; Oak gun cabinet, large & heavy, \$300; Aluminum ramps, \$100. Rankin Co., Brandon, 601-942-2215.

Concrete picnic set, 32" round top, 3 concrete benches, decorative pedestal & benches, \$250. Harrison Co., Biloxi, 228-326-8875.

Fire pit, \$125. Lawrence Co., Jayess, 601-757-6684.

Barn & house clean out, loaded on 20' gooseneck cow trailer, \$2,150 for everything. Covington Co., Seminary, 601-517-5700.

Ducks Unlimited Print Mississippi Snow Geese, artist Jerrie Glasper signed & numbered, size 20x25", print price reduced to only \$59 OBO, free S&H. Marion Co., Foxworth, 601-736-5057.

Versa 2 health & wellness watch, shows vital signs, new, still in the box, paid \$295, asking \$150. Carroll Co., Carrollton, 662-453-7621 or 662-385-5393.

Plastic drums, 15, 30, 35, 55, 60 gal., metal burn barrels, 55 gal. screw on lid feed barrels, IBC plastic totes, 275/300 gal., \$10-\$65 Hinds Co., Raymond, 601-955-1282.

Chest freezer, 2.5' x 6', like new, \$350. Scott Co., Forest, 601-513-2660.

4 vacuum cleaners, excellent cond., all for \$50. Rankin Co., Pearl, 601-383-2315.

10- 4" x 10' SDR35 sewer main pipe, \$20 each, more available but its longer, 20'- \$25. Newton Co., Decatur, 601-938-692.

Pastor’s library, about 1,000 books, old & new, \$10 & up OBO for all. George Co., Lucedale, 601-947-4113.

FIELD
EQUIPMENT

All equipment listed in this category must be offered for sale by persons actually engaged in farming and must have been used on their farm in agricultural pursuits. No commercial, businesses or dealers are allowed to advertise. Equipment bought by farmers for resale purposes are not eligible for this free advertising. Only in-state residents are allowed to advertise within this category.

TRACTORS

Agracat, 22 HP, 4x4, 3PH, PTO, power steering, with 6’ Buhler finishing mower, in great cond., \$4,900. Copiah Co., Georgetown, 601-967-9201.

Avery model R, 90% restored, painted, rear wheel weights, 1 new rear tire, \$1,100; Power King-Economy, \$850; Farmall Cub, full set cultivators, wheel weights, \$1,250. Choctaw Co., Mathiston, 662-617-3228.

Branson 4720, with loader, front wheel assist, new front tires, rear tires 70%, new engine (10 hrs.), new clutch, shed kept, \$16,500. Lee Co., Nettleton, 662-322-1676.

2 Farmall Cubs, 1 Lo-Boy with belly mower, running good, 1 Cub not running, \$1,500. Jones Co., Ellisville, 601-422-9305.

Farmall 140, ‘73 model, 1PH, tandem disk, dual moldboard plow, home-made breaking plow, 4’ rotary cutter with driveshaft, some plows & planting equipment, \$6,000 negotiable. Simpson Co., Shivers, 601-669-9818.

Farmall Super A, with planter & cultivator side dress equipment, \$4,500. Newton Co., Newton, 601-527-1398.

Farmall Super A, with front & rear cultivators, \$2,875, other equipment available if you need planter runner. Covington Co., Mt. Olive, 601-765-7220.

Farmall BN, runs good, \$1,200; Case 430, diesel, wide front, runs good, \$1,800; JD 1010, gas, row crop, in good cond., Webster Co., Mathiston, 662-897-4809.

Ford 3000, gas, motor is stuck in tractor due to setting up, has good tires, \$1,000 OBO. Humphreys Co., Isola, 662-836-7299.

Ford 3000, 2 Ford 8N’s, parts only, \$1,000 each. Lincoln Co., Summit, 601-248-7906.

Ford 5000, row crop type, runs good, everything works, \$7,000. Jasper Co., Moss, 601-433-3073.

Ford 2310, ‘83 model, 2WD, 37 HP, speed trans., runs & drives great, \$5,500. Tunica Co., Tunica, 901-461-8839.

Ford 2000, diesel, new front & back tires, very clean, great shape, doesn’t have power steering but can bed added, \$2,500. Lincoln Co., Summit, 601-249-7906.

Ford 801 Powermaster, with 5’ rotary cutter, no rust, good metal, runs good, \$3,500. DeSoto Co., Olive Branch, 901-494-0216.

Ford 8N, ‘53 model, everything works as it should except lights, \$1,600. Winston Co., Noxapater, 662-803-7949.

Ford 3000, in good cond., 3 cyl. gas, good tires, good lift, \$3,000. Montgomery Co., Duck Hill, 662-739-2370.

Ford 4000, diesel, 52 HP, independent PTO, dual hydraulics, canopy, heavy front bumper, one owner, \$6,500 cash. Monroe Co., Nettleton, 225-937-4806.

Ford NAA, ‘53 model, fresh paint, like new rear tires, runs good, \$2,000; Ford 9N, good lift, like new rear tires, good engine, \$1,500. Lee Co., Blue Springs, 662-871-9080

IH Cub, yellow, with planters & cultivators, \$4,800; Set of front/back cultivators, \$425. Covington Co., Seminary, 601-408-1461.

IH 584, in great cond., \$6,000 cash only. Smith Co., Mt. Olive, 601-382-0091.

IH Farmall 140, with cultivators, \$5,950; IH Farmall 140, with cultivators, \$4,500. Pearl River Co., Poplarville, 985-750-4814 or 985-516-5543.

IH Cub, runs good, with front & rear cultivators, can furnish harrows, planters, runners & planter stand if you need, \$3,500. Covington Co., Mt. Olive, 601-765-7220.

IH 1566, good cond., \$8,500; Reynolds 8CF dirt pan, good cond., \$12,500; 1,000 gal. diesel tank, good cond., \$1,250, retired, don’t need anymore. Copiah Co., Crystal Springs, 601-906-2359.

IHC 444 & 454, 40 & 42 HP, gas eng., everything works on both, power steering on each, good tires, both run good, \$4,500 each. Covington Co., Collins, 601-517-7020.

IMT 539, ‘90 model, 39 HP, industrial PTO, 2 stage clutch, looks, runs & works good, \$5,000. Clay Co., West Point, 662-494-2328.

JD 950, diesel, motor is stuck in tractor due to setting up, has good tires,

\$1,000 OBO. Humphreys Co., Isola, 662-836-7299.

JD 3043D, ‘22 model, with loader, bucket, grapple, 3rd function, rear blade, 1 year old, under 200 hrs., cover, \$28,000. Winston Co., Noxapater, 601-260-0117.

JD 8100, 175 HP, duals, good tires, 11,300 hrs., factory rebuilt engine at 9,000 hrs., good cond., \$35,000. Bolivar Co., Shaw, 662-719-4853.

JD 3320, ‘12 model, only 300 hrs., 4WD, front end loader, excellent cond., \$21,000. Rankin Co., Brandon, 601-808-9068.

JD 50 (Poppin’ John), with roll-o-matic front end, shed kept, tires like new, great for parades, etc., \$5,000 OBO. Hinds Co., Terry, 601-503-3970, ask for Nate.

JD 5065E, only 225 hrs., like new, 2WD, open cab, no front loader, a bargain at \$17,600. Marshall Co., Holly Springs, 954-675-9509.

JD 4430, 125 HP, with 148 front end loader with grapple, JD HX14 rotary cutter, \$21,500; JD 4430, 125 HP, with 720 front end loader, \$17,500. Covington Co., Collins, 601-517-5700.

JD 5020, ‘68 model, stored in shed, has new batteries, runs & is powerful, last used ‘19 moved tons of dirt, \$7,000. Monroe Co., Greenwood Springs, 662-315-4850.

JD 2950, 95 HP, 1 previous owner, 148 loader, canopy, 3,609 hrs., dual hydraulic outlets, original paint, \$29,000. Webster Co., Mathiston, 662-263-6596.

JD 7130, ‘08 model, with 60” Alamo side boom rotary cutter, 25’ reach, 4,600 hrs., \$55,000. Marion Co., Stringer, 601-731-8353.

JD 6410, cab/air, 104 HP (92 HP PTO), with 640 front end loader, in good cond., approx. 3,700 hrs., pictures upon request, \$32,500. Hinds Co., Utica, 601-473-1596.

JD 5045D, with 330 hrs., canopy, shuttle shift, dual hydraulics, tires like new, runs & looks new, perfect cond., no loader, will send pictures, \$15,500. Clarke Co., Quitman, 601-479-0491.

JD 2020 & 2440, with Farm Hand loader, tractor crank & run, \$1,500 each or \$2,500 both. Walthall Co., Tylertown, 601-876-1670.

Kioti NX5510, ‘16 model, 4x4, cab/air, 55 HP, diesel, manual, 425 hrs., shed kept, maintained, ag tires, front end loader with bucket, Bluetooth stereo, \$35,500. Rankin Co., Pelahatchie, 601-260-5966.

Kubota L4400, ‘05 model, 2WD, 44 HP, 558 hrs., heavy duty canopy, brush guard, one owner, great tractor, \$9,500. Copiah Co., Crystal Springs, 601-259-4238.

Kubota SU5000, 50 HP, 8 speed, Kubota 702 loader/bucket, original tires, tread still good, 2 rear hydraulic outlets, always housed, 535 hrs., \$16,000 firm. Kemper Co., Collinsville, 601-986-8316.

Kubota M9000, ‘05 model, in very good cond., 1,800 hrs., cab/air, 2 remotes, MFWD, brand new front tires, \$18,500 OBO. Noxubee Co., Brooksville, 662-889-1763.

Kubota M9000, ‘05 model, 4WD, shed kept, 1,664 hrs., cab/air, loader with pallet fork & hay spear attachments, very good tractor, \$29,500. Lee Co., Guntown, 662-231-8681, call or text.

Kubota MX5400, cab/air, 4WD, 172 hrs., \$35,000 OBO. Noxubee Co., Macon, 601-527-7269.

Kubota MS5030 for parts, hasn’t ran in years, engine still turns over free, has front end loader but no bucket, \$1,200. Jones Co., Moselle, 601-297-7077.

Kubota MX5100, ‘13 model, HST, 4WD, LA844 loader, canopy, quick attach bucket, remote outlets, 539 hrs., pictures available, \$25,500. Hinds Co., Terry, 601-624-8249.

Kubota L235, diesel, 23.5 HP, with Woods L59 belly mower, one owner, always stored in shed, with very low hrs., \$5,500 cash. Monroe Co., Nettleton, 225-937-4806.

Kubota MX5100, ‘12 model, 50 HP, 4WD, quick attach loader bucket, Pre-emission, 1,060 hrs., shuttle shift, industrial tires, no flats, regular maintenance, \$19,000. Jefferson Davis Co., Oak Vale, 601-441-4532.

Kubota L245H, diesel, with cultivators, \$11,500. Pearl River Co., Poplarville, 985-750-4814.

Mahindra 1533, ‘17 model, 4WD, shuttle package, 33 HP, diesel, 250 hrs., with front end loader, box blade, 5’ rotary cutter, kept under shed, \$21,500. Madison Co., Canton, 662-816-2768, leave message.

Mahindra, 4WD, 28 HP, diesel, with loader, bucket, box blade, tiller & landscape rake, 1,038 hrs., one owner, well maintained, \$17,500. Prentiss Co., Marietta, 662-587-9494.

MF 4253, open cab, 85 HP, runs good, metal & fenders good, does not use or leak oil, \$15,000. Simpson Co., Magee, 601-405-6970.

MF 175, Perkins eng., new clutch, power steering, good tires, ROP & canopy, rear hydraulic, looks/runs/works good, \$6,000. Clay Co., West Point, 662-295-2329.

MF 1010, ‘85 model, diesel, no issues, runs good, \$3,000. Lauderdale Co., Meridian, 601-678-1962.

MF 180, 4 cyl. Perkins eng., power steering, good tires, live PTO, rear

hydraulics, looks/runs/works good, \$4,000. Noxubee Co., Brooksville, 813-760-7729, text/call/leave voice-mail.

CUTTERS & MOWERS

4’ rotary cutter, \$300. Pontotoc Co., Pontotoc, 662-760-6729.

5’ Big Bee Agra rotary cutter with stump jumper, like new, \$1,650. Clay Co., West Point, 662-494-2328.

6’ JD MX6 rotary cutter, like new cond., \$3,000. Leake Co., Carthage, 769-274-6320.

6’ Betstco heavy duty PTO powered finishing mower, like new, solid tires, adjustable height, steel welding frame, like new, \$2,350. Lafayette Co., Oxford, 662-801-1517 or 662-801-1517.

6’ Modern rotary cutter, in good cond., 3PH, \$1,000 cash. Monroe Co., Nettleton, 225-937-4806.

6’ Agra Big Bee rotary cutter with stump jumper, like new, \$1,750. Clay Co., West Point, 662-295-2329.

6’ Bush Hog rotary cutter, brand new, \$3,500 firm. Lincoln Co., Summit, 601-249-7906.

6’ Bush Hog 306 rotary cutter, total rebuild with new blade & slip clutch, in good cond., \$1,400. Jasper Co., Paulding, 601-670-3196.

6’ Big Bee rotary cutter with stump jumper, in great cond., \$1,200. Copiah Co., Georgetown, 601-967-9091.

7’ rotary cutter, heavy duty, sold as is, cash only, \$1,200. Attala Co., Kosciusko, 662-739-4543.

7’ Howse rotary cutter with 2 wheels, \$1,800; 5’ Rhino rotary cutter, good cond., \$1,600. Copiah Co., Georgetown, 601-942-8991.

7’ Hardee pull type rotary cutter with stump jumpers, good shape, \$2,000; 10’ Rhino pull type rotary cutter, heavy duty gear box, stump jumpers, \$4,500. Adams Co., Natchez, 601-431-1020.

14’ JD HX14 rotary cutter, \$6,200. Covington Co., Collins, 601-517-1693.

15’ Bush Hog clipper for parts or repair, good parts, wheels, shafts, etc., \$1,500. Winston Co., Louisville, 662-803-8332.

15’ Side-Winder batwing rotary cutter, older machine, in good shape, has been shed kept, was operating when parked approx. 2 years ago, \$3,500. Leake Co., Carthage, 601-562-1878.

15’ JD HX15 rotary cutter, \$7,500; 20’ Bush Hog 2720 rotary cutter, \$14,000. Clay Co., West Point, 662-295-2226

Bush Hog 3210 pasture clipper, in very good shape, call for pictures, \$6,500. Wilkinson Co., Woodville, 601-334-2383.

GRADERS & BLADES

4’ Tufline box blade, \$375. Leake Co., Carthage, 601-564-1379.

5’ box blade, \$400. Jones Co., Ellisville, 601-543-5997, please send text.

6’ box blade, 3PH, in great cond., \$800. Copiah Co., Georgetown, 601-967-9091.

6’ box blade, \$300. Pontotoc Co., Pontotoc, 662-760-6729.

6’ Land Pride grader blade, 3PH, \$800 cash. Monroe Co., Nettleton, 225-937-4806.

Large 3PH dirt pan, pull or push, \$225 cash. Chickasaw Co., Houston, 662-456-5716.

Dirt scoop, 3PH, reversible, pull or push to load, in excellent cond., can send pictures, \$350. Pike Co., Summit, 601-248-8843.

GRAIN STORAGE & EQUIPMENT

2 grain silos, some rust on tops, sides are excellent shape, \$100 each OBO, you move. Newton Co., Lake, 769-274-2789, call between 5:30 - 7:30 p.m. weekly, anytime on weekends.

IRRIGATION EQUIPMENT

Soil moisture station, 4 different depth probes, solar panel, new battery, portable photos available, \$500. Noxubee Co., Macon, 662-708-0172.

BE 4” Centrifugal transfer pump, Honda motor with 580 gpm transfer, suction & discharge hose kit included, \$1,200. Newton Co., Decatur, 601-938-6692.

PLANTING & TILLAGE

10’ JD 1590 drill, \$38,000. Union Co., New Albany, 662-488-1292.

3PH heavy duty sub-soiler, \$350; 3PH middle buster, \$275. Lauderdale Co., Bailey, 601-616-8225.

12’ Amco heavy duty new ground disk, new cylinder, bearings all good, \$5,000; 10’ Amco 3PH chisel plow, needs 1 plow, very heavy, \$1,000. Simpson Co., Magee, 601-405-6970.

Heavy duty sub-soiler, 2 shanks, \$100. Bolivar Co., Shaw, 662-754-6565.

3PH 2-bottom turning plow, \$150 cash. Chickasaw Co., Houston, 662-456-5716.

3PH cultivator, \$250. Pontotoc Co., Pontotoc, 662-760-6729.

2-row section harrow, very good cond., \$165; 3PH 1-row middle buster, good cond., \$125. Winston Co., Noxapater, 662-803-7949.

6’ King Kutter tiller, in good cond., \$1,500, plus other equipment. Webster Co., Mantee, 662-456-6952, ask for Dennis.

3PH Frontier tiller (offset) RT1157, in great cond., pictures upon request, \$1,850. Hinds Co., Utica, 601-473-1596.

5’ single axle disk, can be pulled by a 4-wheeler, \$400. Pearl River Co., Carriere, 769-242-2399.

6’ 2-row roller, pull type, \$450; 12.5’ 3PH roller, \$900; 12’ Wil-Rich field cultv., 3PH, \$850. Bolivar Co., Boyle, 662-721-6579.

7’ x 4’ peg tooth harrow, 3PH with drag chain, \$650. Pearl River Co., Poplarville, 769-926-1470.

PICKERS & HARVESTERS

30” 4-row corn head attachment, model 430A, came off Gleaner F3 combine, last used about 4 years ago, \$800. Rutledge Farms, Copiah Co., Hazlehurst, 601-894-2401.

SPRAYERS & SPREADERS

Spray rig, complete, 3PH, 30 tips, tanks, pump, filters, hoses, field ready, non-fold, \$500. Washington Co., Leland, 662-822-9959.

AG TRAILERS & CARTS

Small metal utility trailer, in good shape, has been in shed most of it’s life, \$700. Lauderdale Co., Meridian, 601-286-3190.

250 gal. fuel tank on 2-wheel trailer, all metal, new tires & spare, 12-volt electric pump with hose, front jack, pulls good, \$850. Pearl River Co., Poplarville, 769-926-1470.

AG PARTS & TIRES

Farmall Super A blocks, C113, C123, \$400 each. Covington Co., Seminary, 601-408-1461.

Used 20.8 x 38 tractor tire, \$200. Noxubee Co., Macon, 662-708-0172.

Set of nearly new tires, still have numbers on tread, 13.6 x 28 on MF 240 rims & 6.00 x 15 3-rib with tubes, no rims, \$360. Madision Co., Canton, 251-424-4898.

2 almost new 16.00R25 tires, steel belted radials, very good, \$1,800 new, asking \$500 each. Noxubee Co., Macon, 662-574-3688.

Cultivator gauge wheel tires, 4” x 12”, smooth, new, \$12 each. Washington Co., Leland, 662-822-9959.

LOADERS & ATTACHMENTS

2021 Cat. 299D3XE skid steer, approx. 500 hrs., with bucket, grapple & boom, \$116,000; New Gyro Trac mulcher head for skid steer, \$35,000. Marion Co., Stringer, 601-731-8353.

Kubota SVL 75-S skid steer, 1,975 hrs., rubber tracks, \$45,000. Walthall Co., Tylertown, 601-876-1670.

Hydraulic round hay bale gripper, skid steer attachment, \$1,000. Rankin Co., Florence, 601-906-8106.

Bush Hog 950 backhoe attachment, in very good cond., used only a few times, call for pictures, \$4,000. Wilkinson Co., Woodville, 601-334-2383.

JD front end loader pallet forks, \$900. Covington Co., Collins, 601-517-1693.

78” heavy duty root rake style grapple for skid steer loader, \$2,500. Leake Co., Carthage, 769-274-6320.

Grapple, 48” x 51”, heavy duty, made for 45 HP or more tractor or skid steer, can send pictures, \$900. Jasper Co., Paulding, 601-670-3196.

OTHER AG IMPLEMENTS

PTO post hole digger with large auger, \$1,000. Rankin Co., Brandon, 601-808-9068.

3PH pallet forks, \$600; Gin pole, \$200; Antique disk, sickle mower or chopper, \$300 each. Covington Co., Collins, 601-517-1693.

3PH lift pole, 7’ 6” long, can send pictures, \$100. Pike Co., Summit, 601-248-8843.

3PH turbo saw attachment, great for cutting down trees & hedge rows, pictures upon request, \$4,000. Hinds Co., Utica, 601-473-1596.

Bush Hog 865H 3PH backhoe, in great shape, always stored in barn, pictures available, \$4,200. Rankin Co., Puckett, 601-622-7335.

HAY & FORAGE EQUIPMENT

Claas Rolant 250 round baler, 4x4 bales, in good cond., \$5,000. Newton Co., Newton, 601-527-7841.

Farm King MDN7 9’ 4” hay mower, ‘16 model, SN 207408, used very little, \$6,500; Hydraulic round hay bale gripper, skid steer attachment, \$1,000. Rankin Co., Florence, 601-906-8106.

JD 459E round baler, 4x5 bales, 4,850 bales baled, selling due to health, \$20,000; JD 2355, good cond., \$10,000. Attala Co., Kosciusko, 662-633-1545.

JD 557 round baler, works good, good belts, everything works good on it, \$4,000. Jasper Co., Moss, 601-433-3073.

Kuhn GMD 800 GII HD disc mower, 3 years old, excellent cond., original blades, used very little, \$8,299 OBO. Noxubee Co., Brooksville, 662-889-1763.

NH 640 round baler, 4x5 bales, field ready, new belts & tires, excellent cond., \$5,500. Winston Co., Louisville, 662-803-5771.

Vermeer tedder, in fair cond., \$1,500; Vermeer 7040 cutter, good cond., \$5,500. Amite Co., Gloster, 601-249-6673.

Vermeer TR tedder/rake, JD 535 round baler, string wrap, both in very good cond., needs no work to start using, \$8,500. Pike Co., Summit, 601-248-1874.

Welger RP15 round baler, \$2,500; Welger RP15S round baler, \$2,500; 8-wheel rake, \$1,200; NH 617 cutter, \$2,500, sold as is, cash only. Attala Co., Kosciusko, 662-739-4543.

TRAILERS,
TRUCKS &
MACHINERY

No commercial, businesses or dealers are allowed to advertise. Trailers, Trucks and Machinery bought by individuals for resale purposes are not eligible for this free advertising. Only in-state residents are allowed to advertise within this category.

UTILITY & EQUIPMENT TRAILERS

8’ x 5’ Haulmark Deluxe enclosed trailer, good cond., good tires, ladder rack, single swing door in back, \$2,000 negotiable. Attala Co., Kosciusko, 601-214-3541.

8’ x 7’ utility trailer with heavy duty gate, spare tire, tandem axle, nearly new, never pulled anything on it but 4-wheeler once, 7,000 lbs. GVWR, \$5,500. Oktibbeha Co., Starkville, 662-312-4947.

10’ x 5’ single axle trailer, ‘21 model, 2”x 8” wood floor, wire gate, new spare tire, pictures upon request, \$1,200 OBO. Hinds Co., Clinton, 601-937-5483.

16’ bumper pull trailer, new pressure treated floor, tires 75% good, new paint, \$2,200. Jones Co., Laurel, 601-319-5248.

16’ bumper pull trailer, side rail, double axle, in good cond., \$1,750.

Copiah Co., Crystal Springs, 601-209-6200.

16’ trailers, 3 available, \$1,100 each. Newton Co., Union, 601-774-8578.

16’ + 5’ dovetail gooseneck flatbed trailer with 2- 7,000 lb. axles, \$3,500; 20’ + 5’ dovetail gooseneck flatbed trailer with 2- 7,000 lb. axles, \$5,000, cash. Smith Co., Mt. Olive, 601-382-0091.

16’ x 7’ Load Trail gooseneck dump trailer, 7,000 lb. axles, 10 ply tires with spare, 2-way tailgate, ramps, 2’ sides, hydraulic lift, \$12,500. Jefferson Davis Co., Carson, 601-943-6881 or 281-731-0096.

16’ x 7’ trailer with dovetail, solid steel floor, \$3,000. Leake Co., Carthage, 601-564-1379.

16’ x 7’ heavy duty flatbed trailer, 5” angle iron frame, house trailer axles, new floor, good cond., no lights, \$1,000 OBO. Yazoo Co., Bentonla, 662-571-4300.

18’ Pacesetter trailer by Diamond Mfg., 2- 3,000 lb. axles, 2” ball hitch with 4 pin light plug, can send pictures, \$1,750. Madison Co., Canton, 601-613-7785.

18’ x 7’ gooseneck trailer, 1/2-ton or 3/4-ton, \$1,200. Pontotoc Co., Pontotoc, 662-760-6729.

18’ x 7’ Big Tex 70DM bumper pull trailer, 2 axles - 3,500 lbs. each, steel floor, rear slide ramps, spare tire, electric brakes, like new, \$4,700. Madison Co., Canton, 662-816-2768.

18’ x 7’ bumper pull trailer, 3,500 lb. axles, ramps, new floor, factory 3” ID, bulldog hitch, \$3,000. Smith Co., Mize, 601-906-4857.

25’ gooseneck trailer, good trailer, \$7,000. Humphreys Co., Isola, 662-836-7299.

Phelan 25-ton 2-axle lowboy, \$10,500. Alcorn Co., Corinth, 662-286-9158.

Semi flatbed trailers for bridge with all metal floor, 40’ long \$7,000; 45’ long \$7,850; 48’ long \$8,400. Jones Co., Ellisville, 601-498-4235.

Stehl tow car dolly, \$650. Copiah Co., Georgetown, 601-942-8991.

Small metal utility trailer, in good shape, has been in shed most of it’s life, \$700. Lauderdale Co., Meridian, 601-286-3190.

Heavy duty trailer hitch, 2 5/16” ball, weight distributing adjustable bars, sway bars, etc., missing bolt on clamps on trailer, as is \$100. Jackson Co., Vancleave, 228-297-6630.

TRUCKS

Chev. Silverado 2500HD ‘13, ext. cab, new tires, brakes & drums, motor has 150k miles, body has 290k

miles, \$7,000 cash only. Jefferson Davis Co., Bassfield, 601-522-3398.

Chev. Silverado 2500 LT ‘22, Z71, 4x4, crew cab, Duramax diesel, one owner, 70k miles, pictures available, \$54,000. Hinds Co., Terry, 601-624-8249.

Chev. 1500 ‘99, Z71, 4x4, super cab, 175k miles, AC, excellent tires, no body damage, go anywhere, \$8,000. Smith Co., Mize, 601-906-4857.

Chev. Colorado ‘15, 2WD, ext. cab, 4 cyl., 117k miles, \$12,000. Yazoo Co., Yazoo City, 662-571-7848.

Chev. Silverado 1500 LT ‘15, crew cab, \$23,000; Ford Ranger F100 War Wagon truck ‘76, \$3,000, clear titles. Covington Co., Collins, 601-517-1711.

Dodge ‘90, SWB, one previous owner, V8, auto., 78k miles, everything new, \$15,000. Webster Co., Mathiston, 662-263-6596.

Dodge D1500 ‘99, gas eng., auto. trans., \$800 or for parts. Stone Co., Wiggins, 601-928-8110.

Ford F-150 ‘95, XLT, Off-Road package, ext. cab, short bed, bush button 4x4, 5.8L auto., 105k miles, AC, folding Tonneau cover, bed liner, \$8,900. Rankin Co., Pelahatchie, 601-260-5966.

Ford F-250 ‘07, Lariat, crew cab, 4x4, FX4 package, 180k miles, 6.0 liter turbo diesel, tan leather interior, Arizona Beige Metallic exterior, well maintained, \$15,700. Madison Co., Jackson, 601-259-1097.

Ford F-150 ‘20, XLT, 4x4, 5.0L V8, 302A Equip.Group, Ranch Hand brush guard, tow package, 1 owner, 30k miles, stone gray, excellent cond., \$44,000. Madison Co., Flora, 678-646-1843.

Ford F-150 ‘12, Lariat, 4x4, Warn 9,000 lb. winch, heavy duty front bumper, toolbox, WeatherTech floor mats, spray-in bed liner, 142k miles, no issues, \$18,000. Holmes Co., Lexington, 601-259-6110.

Ford ‘96, Super Duty, XLT, 7.3L Power Stroke diesel motor, 106,567 miles, \$6,000. Pike Co., Summit, 601-810-8415.

Ford Ranger ‘92, 4WD, reg. cab, 7’ bed, 2.9L V6, auto., heat/AC, good body & glass, engine not running, project truck or parts, \$500 OBO. Warren Co., Vicksburg, 601-642-4658.

Ford F-350 ‘01, SRW, crew cab, long bed, 5.4 Triton, auto., cold AC, work truck, 194k miles, runs good, good tires, clear title, \$3,000 firm. Panola Co., Batesville, 662-703-9670.

GMC 2500HD ‘10, ext. cab, white with black cloth interior, great cond., auto., 6.0 V8, new tires, nice clean truck, 236k miles, \$14,800. Copiah Co., Hazlehurst, 601-573-2036.

GMC 2500HD ‘04, SLE, Duramax diesel, ext. cab, good cond., one owner, 260k miles, \$15,000. Leake Co., Carthage, 601-416-2444.

Ram 3500 ‘22, Big Horn, crew cab, red, 4WD, turbo charged diesel, direct injection, 51,665 miles, list price \$87,000, asking \$62,000 OBO. Warren Co., Vicksburg, 601-618-3381.

Toyota Tacoma ‘12, 4x4, 4-door, crew cab, long bed, white with black trim, V6, 175,986 miles, \$16,000. Hinds Co., Byram, 601-260-3340.

Toyota Tundra ‘11, with bed cover, 176,068 miles, color white, 4-door, V8, excellent cond., \$18,000. Neshoba Co., Philadelphia, 601-504-0533.

Toyota ‘90, reg. cab, rebuilt motor, has toolbox, clear title, \$6,500. Attala Co., Ethel, 601-416-6447.

TRUCK ACCESSORIES & PARTS

Front passenger door with power windows for 2006 Toyota Tundra SR-5 truck, gray color, can send pictures, \$100. Lauderdale Co., Meridian, 601-938-2786.

Pair of chrome UWS step bars, full length wheel to wheel, came off 2011 GMC 4-door truck, \$125. Copiah Co., Hazlehurst, 601-573-2036.

12-volt diesel transfer pump for truck fuel tank, works good, \$150. Lauderdale Co., Meridian, 601-692-3298.

New bumper pull, complete assembly, still in factory box, never opened, fits all heavy duty trucks (flatbeds), \$325. Jackson Co., Moss Point, 228-217-2360.

Roll up truck bed cover, 1 year old, brand is Gator, fits GM trucks 2019-2024, \$200. Rankin Co., Brandon, 662-803-5096.

Rear ranch hand bumper, 2010 Dodge dually, \$300. Perry Co., Brooklyn, 601-549-6914.

Toolbox for full size pickup bed, white but needs painting, \$60. Lee Co., Tupelo, 662-842-3272.

Firestone Transforce AT tires, 3- LT 265/70R17 9/32nds, \$100 for all 3; Scorpion Zero tires, 4- 245/50R20 5/32nd tread, \$20 each. Jefferson Davis Co., Prentiss, 601-543-3012.

4- 22.5 Hub pilot aluminum big truck tires, \$600. Pike Co., Jayess, 601-551-7042.

SUVS & VANS

GMC Acadia ‘11, 85k miles, one owner, non-smoker, \$7,500. Pike Co., McComb, 601-730-4504.

GMC Yukon SLE ‘16, low mileage 58k, loaded, Michelin tires, towing package, exterior white frost, excellent cond., text for pictures, \$29,500.

Jasper Co., Bay Springs, 601-764-4455.

Jeep Cherokee ‘17, 60,800 miles, excellent cond., black interior & exterior, 6 cyl., auto. trans., \$16,000. Oktibbeha Co., Starkville, 662-312-5316.

Jeep Liberty Sport ‘06, silver, \$3,700 firm. Covington Co., Mt. Olive, 601-966-0142.

INDUSTRIAL TRUCKS & VANS

2007 Freightliner Columbia, single axle, Cat. C13 eng., 10 speed, aluminum wheels, excellent Old Dominion truck, fifth wheel & gooseneck hitch, can send pictures, \$18,500 OBO. Neshoba Co., Philadelphia, 601-562-6720.

1978 Mack dump truck, R model, 300 eng., 6 speed, good farm truck, \$15,800. Scott Co., Forest, 601-507-7000.

1988 Mack dump truck, 14 yard Warren bed, camelback suspension, 6 speed, \$30,000; 2005 Ford F750 Super Duty water truck, approx. 14,500 miles, diesel, \$35,000. Marion Co., Stringer, 601-731-8353.

CONSTRUCTION EQUIPMENT

Older Link-Belt LS2800 excavator, weighs 45,000 lbs., with 1.5 yard bucket size, dependable machine, will send videos of it working, must see, \$11,000. Pike Co., Summit, 601-248-8918.

1985 Allis-Chalmers HD6, was running before setting up, sold as is \$3,500. Rankin Co., Pearl, 601-260-5706.

International TD14A dozer, running when parked years ago, good for parts or to restore, \$2,100 OBO. Lauderdale Co., Meridian, 601-681-4495.

621 scraper (earth mover), in great cond., \$35,000. Lincoln Co., Wesson, 601-757-1250.

Reynolds 8CF dirt pan, good cond., \$12,500; 1,000 gal. diesel tank, good cond., \$1,250; IH 1566, good cond., \$8,500, retired, don’t need anymore. Copiah Co., Crystal Springs, 601-906-2359.

1984 TD15C LGP dozer, \$23,500; 2- Terex TS14 scrapers, \$17,500 each; 60’ Grove RT58 boom crane, \$5,000; Clark 736 crane, 40-ton, \$26,500; D65PX dozer, \$40,000. Alcorn Co., Corinth, 662-286-9158.

2021 Cat. 299D3XE skid steer, approx. 500 hrs., with bucket, grapple & boom, \$116,000; New Gyro Trac mulcher head for skid steer, \$35,000. Marion Co., Stringer, 601-731-8353.

JD 75G excavator, hydraulic thumb, 1,450 hrs., 19,000 lbs., \$85,000; JSW BH80 excavator, Deutz eng., 48,000 lbs., runs but does not track, \$5,000. Walthall Co., Tylertown, 601-876-1670.

FORESTRY & LOGGING EQUIPMENT

1986 Mack truck, heavy duty, 54k miles, twin screw, has log bolster bed, heavy duty hydraulic knuckle boom log loader, \$65,000. Webster Co., Mathiston, 662-263-6596.

2 year old, never used, ROP wood-mill, comes with 10 extra blades, \$3,000. Pike Co., Summit, 601-248-8918.

LAWN & GARDEN EQUIPMENT

Plow Horse, 5.5 Briggs & Stratton, some plows, in good cond., \$425. Lauderdale Co., Meridian, 601-678-1692.

Poulan Pro 42” riding mower, 19 HP Briggs, runs perfect, \$400; 48” Husqvarna, 24 HP Briggs V-Twin rider, \$200. Jackson Co., Hurley, 228-627-4334.

Cub Cadet, parting out, \$1,000. Lincoln Co., Summit, 601-248-7906.

Snapper self-propelled lawn mower, 21” cut, 6 HP, \$250; Ryobi 5 HP 18” cut string trimmer, \$225; Swisher 5.5 HP string trimmer, \$225. Lauderdale Co., Bailey, 601-616-8225.

Garden tiller, 5 HP eng., \$300. Newton Co., Union, 601-774-8578.

Rear till walk-behind tiller, purchased 2023, has 12-15 hours on it, paid \$1,245, asking \$850, text for pictures, videos & info. Stone Co., Perkinson, 601-795-5850.

2020 Big Dog stout commercial zero-turn mower, 23 HP Kawasaki, 84 hrs., bought new, call for pictures, \$4,500. Smith Co., Mize, 601-906-4857.

2022 John Deere 950Z commercial mower, only been used twice, has 20 hrs. on it, nice machine, \$13,500. Copiah Co., Hazlehurst, 601-613-6130.

Cub Cadet zero-turn lawn mower, 23 HP Kawasaki, 54” cut, commercial, bought new, \$3,000. Webster Co., Mathiston, 662-263-6596.

Bush Hog ES2050 zero-turn mower, Honda GXV620 eng., 1,140 hrs., runs & cuts great, greaseable spindles, some rust holes on otherwise thick heavy deck, \$850. Walthall Co., Sandy Hook, 601-876-0031.

Bowens small garden tiller with plow, runs like new, \$175. Winston Co., Louisville, 662-736-6990.

Commercial backpack blower, Stihl SR 450, with sprayer & duster, in good cond., was \$700 new, asking

\$450. Lee Co., Shannon, 662-767-8851.

Gravely walk-behind mower, sulky, 2 plows & tiller, \$1,000. Rankin Co., Brandon, 601-260-3146.

Fire pit, \$125. Lawrence Co., Jayess, 601-757-6684.

5’ single axle disk, can be pulled by a 4-wheeler, \$400. Pearl River Co., Carriere, 769-242-2399.

Brush saw with 20” blade, 4 HP Briggs engine, was running when put in storage, 1 extra blade, can send pictures, \$150. Lauderdale Co., Meridian, 601-938-2786.

Bean sticks, square hardwood sticks 7’ 6”, 60¢ each, cash only. Newton Co., Union, 601-416-2005.

Black plastic 25 gal. tubs, snap-on lids, very good cond., \$20 each. Holmes Co., Durant, 601-503-7334.

25- 30 gal. bags of premium pine straw, \$10 each, pickup or local delivery only. Walthall Co., Tylertown, 601-781-5769, text.

Gin trash, feed tub full, price includes feed tub, \$20. Hinds Co., Raymond, 601-955-1282.

OUTDOOR POWER EQUIPMENT

BE 4” Centrifugal transfer pump, Honda motor with 580 gpm transfer, suction & discharge hose kit included, \$1,200. Newton Co., Decatur, 601-938-6692.

Honda generator, 5000 watts, like new, serviced & ready for hurricane season, \$1,600. Pike Co., Summit, 601-341-7874.

Homelite 11 HP 5500 watt generator on dolly, \$500. Lawrence Co., Jayess, 601-757-6684.

TOOLS & HARDWARE

Bullseye Pro rechargeable tire inflator, cordless, inflates tires in less than 2 minutes, new in box with all accessories. \$70 cash. Warren Co., Vicksburg, 601-638-1649.

Delta wood shaper, 110V, wheel kit, Grizzly 3/4” quarter round cutter, Grizzly tongue & groove cutter set, very good cond., text for photos, \$400. Amite Co., Liberty, 601-613-6159.

Makita electric circular saw with extra blades, \$100; Milwaukee saw-zall with 2 chargers & blades, \$200; Craftsman multi-tool kit, 12-volt Lithium with charger, \$75. Pearl River Co., Carriere, 504-430-1437.

6” double wood shell snatch block with hook for 3/4” rope, \$50; 10 keyed padlocks, \$10. Copiah Co., Crystal Springs, 985-320-1175.

Miller 40 welding machine, 4 cyl. gas eng., mounted on 2-wheel trailer, \$2,500. Marion Co., Columbia, 601-441-2145.

MISCELLANEOUS EQUIPMENT

5- 4" x 4" x 1/4" x 20' steel tubing, slight surface rust, paid \$950 each, asking \$2,500. Carroll Co., Cruger, 662-816-1188, text.

I-beams & I-channels, different sizes & lengths, will throw in 2-ton electric hoist if all taken, \$1,500. Attala Co., Ethel, 601-416-6447.

All thread rods, low carbon zinc coated, 1" diam. x 10' long, \$25 each; 5/8" diam. x 10' long, \$10 each. Greene Co., Leakesville, 601-394-3881.

3'x5' roll stainless steel woven wire mesh, \$250; 28 heavy duty galvanized cable clamps (1/2" & 5/8") \$1 each or \$20 for all. Copiah Co., Crystal Springs, 985-320-1175.

2 rolls of 1" cable, approx. 100' each, 1 plastic coated, 1 not, good cond., \$150 each, \$200 for both. Jefferson Davis Co., Bassfield, 601-543-5785.

Used 3/4" nylon rope, 2,400 foot/spool, \$400; Used 3/4" nylon rope, 8,000 foot/spool, \$700; Used 1 1/2" nylon rope, 4,000 foot/spool, \$700. Jones Co., Laurel, 601-319-5248.

10- 4" x 10' SDR35 sewer main pipe, \$20 each, more available but its longer, 20'- \$25. Newton Co., Decatur, 601-938-692.

2021 Ole Hickory BBQ pit on trailer, model SSE, holds 60 Boston butts, perfect for deer processor or high volume BBQ restaurant, motivated seller, \$22,000. Leflore Co., Greenwood, 662-299-8495.

Plastic drums, 15, 30, 35, 55, 60 gal., metal burn barrels, 55 gal. screw on lid feed barrels, IBC plastic totes, 275/300 gal., \$10-\$125. Hinds Co., Raymond, 601-955-1282.

55 gal. blue plastic barrels with screw tops, \$40 each; 55 gal. metal burn barrels, \$25 each; 275 gal. tote tanks, \$75 each. Covington Co., Seminary, 601-408-1461.

150 gal. propane tank, 20% gas in it, \$650; 330 gal. propane tank on wheels, has filler hose on it, 100 gal. gas in it, \$700. Copiah Co., Utica, 601-695-9021.

250 gal. fuel tank on 2-wheel trailer, all metal, new tires & spare, 12-volt electric pump with hose, front jack, pulls good, \$850. Pearl River Co., Poplarville, 769-926-1470.

Propane tanks: Tank for forklift up to 1,000 gal., \$75-\$1,500 depending on size, with data plate. Marion Co., Columbia, 601-441-2145.

POULTRY EQUIPMENT

STAALKAT egg packing machine with conveyor, excellent cond., kept clean, have additional tray dispenser, have pictures & video, \$75,000. Greene Co., State Line, 228-323-4254.

Farm Alarm IV System with antennas, sensors & manual for 6 houses, upgraded system & no longer need, \$3,000. Leake Co., Carthage, 601-527-9559.

LIVESTOCK TRAILERS & WAGONS

5' x 14' livestock trailer, no top, was used last year, tires hold air, has cut gate, no lights, no title, \$1,500 cash only. Leake Co., Carthage, 601-562-1878.

2008 Dream Coach Platinum 4-horse trailer with living quarters, generator, ramp, drops on both sides, barn kept, 29' 4" box side, rubber floor horse area, \$58,000. Lauderdale Co., Meridian, 601-917-6263.

32' gooseneck livestock trailer, 3 cut gates, 3 axles, good tires, \$9,800. Newton Co., Lawrence, 601-486-3349.

Bumper pull & gooseneck livestock trailers, dual axle, treated wood floor, covered top, center & escape gate, also flatbed trailers, \$300-\$2,800. Covington Co., Seminary, 601-517-5700.

16' x 6' gooseneck livestock trailer, bar top, 5 new tires/wheels, 3" oak floor, always shed kept, used very little, not used in 10 years, \$3,500. Yazoo Co., Bentonia, 662-755-2543.

24' livestock trailer, brand new 14 ply tires, dual axles with brakes, \$7,500. Amite Co., Gloster, 601-249-6673.

Gooseneck horse trailer with dressing room, \$5,000. Prentiss Co., Booneville, 662-720-5762.

16' Ponderosa gooseneck stock trailer, new tires, rubber mat, open & slide rear gate, middle gate, side door, \$4,500. Webster Co., Mathiston, 662-263-6596.

16' WW bumper pull cattle trailer, tires almost new, almost new heavy duty canvas top, flooring & paint job, \$4,000. Holmes Co., Durant, 601-503-7334.

LIVESTOCK EQUIPMENT

Squeeze chute in like new cond., C&B Outdoor brand with self-catching headgate, stored under barn, free delivery within 80 miles, \$2,800 OBO. Hancock Co., Kiln, 228-860-0424.

Priefert open sweep, new, never used, \$3,500 OBO. Walthall Co., Tyler-town, 601-303-5538.

24- 12' corral panels, green, 60", \$1,400. Madison Co., Canton, 601-613-7785.

Pull type calf creep feeder, 6' long with fold-up side panels, \$2,250. Rankin Co., Pelahatchie, 601-278-4748.

200 gal. liquid feeder lick tub, 2 lick wheels, \$250. Stone Co., Wiggins, 601-928-3828.

Metal hanging single sided hay basket, 20" x 9" x 20 1/4", hangs on 1 1/2" board/material, constructed 1/4" rods with 3" spacings, have 50 baskets, \$30. Oktibbeha Co., Starkville, 662-418-3724.

Sharpening/repair work of all livestock clippers, blades, shears for cattle, horses, sheep, goats, dogs, etc., quick turnaround, small/large jobs, \$10 sharpening, \$20/up repairs. Amite Co., Liberty, 601-657-2277.

LIVESTOCK TACK

2 saddles & 3 bridles, in good cond., \$250 for all. Carroll Co., Grenada, 662-809-0536.

16 1/2" Broken Horn show saddle, silver, \$2,500; 16 1/2" Bull Swanson show saddle, silver, \$2,500, both with saddle covers; Phil Harris show pad, \$100. Sunflower Co., Cleveland, 662-719-5003.

Older Circle Y roping saddle, completely reworked, new wool, 15 1/2", feel free to ask for more info, price is firm, \$500. Newton Co., Hickory, 601-604-2750.

HUNTING, FISHING & CAMPING

No commercial, businesses or dealers are allowed to advertise in this category. Only in-state residents are allowed to advertise.

ATVs & UTVs

Kubota 900, diesel, dump bed, windshield, grill guard with winch, new tires, new battery, nice cond., power steering, Realtree exterior, 680 hrs., SN 38688, \$10,000 firm. Kemper Co., Collinsville, 601-986-8316.

2020 Can-Am Maverick Sport XMR, new 36" tires, 4' portal lift, Wet-sounds bar & sub, half windshield, LED light bar, new upgraded tie rods, \$19,000. Hinds Co., Terry, 601-502-6270.

1980 ATC 110 3-wheeler, excellent cond., plastic, gas tank & tires excellent, \$1,850; 2005 Kawasaki Bayou 250 4-wheeler, excellent cond., \$1,400. Hinds Co., Clinton, 601-937-5483, ask for Keith.

2014 Club Car XRT-850E, camo, one owner, \$4,500. Madison Co., Ridgeland, 601-209-7800.

2023 Polaris Ranger Crew 1000 Premium, 6 passenger, Pursuit camo, 4,500 lb. winch, poly roof, tilt-up windshield, only 60 miles, \$22,000. Rankin Co., Flowood, 601-955-7890.

2002 Polaris Expedition, 4WD, winch, \$2,500 OBO; 2005 Can-Am Bombardier, 200cc Rally X auto. trans., 2WD, \$2,000 OBO. Madison Co., Ridgeland, 601-940-5396.

2018 Polaris 150 Youth, 124 hours (currently), added a hard top, front windshield & back windshield, Geofencing capabilities, owner's manual regularly serviced, \$4,500. Chickasaw Co., Woodland, 662-542-1330.

E-Z-GO electric golf cart, year old batteries, 4'x3' box bed, runs great, can carry clubs, pictures available, \$2,000. Noxubee Co., Brooksville, 813-760-7729, call/text/leave message.

2 Kubota RTV 900's, diesel, 4WD, both operate, 1 has hydraulic bed & 1 manual, 1 has winch, both have windshields, 2,500 +/- hours each, \$7,500. Pike Co., Summit, 601-248-1874.

Half windshield for mid-size Polaris Ranger, \$40. Calhoun Co., Varadman, 662-414-1531.

BOATS & ACCESSORIES

Crappie Fisherman, Triton 1550 Crappie, 40 HP Yamaha 4 stroke, tilt, less than 10 hrs., Garmin, live scope, stick steer, live well, power poles, \$13,000. Carroll Co., McCarley, 662-858-0076.

2021 War Eagle 2072, camouflaged, 90 HP SHO Yamaha tiller, trolling motor, 2 depth finders, tandem axle trailer, bimini top, bilge pump, one owner, \$25,000. Madison Co., Flora, 678-646-1843.

12' Game Fisher jon boat & trailer, 47 lb. thrust trolling motor & battery, ready for fishing, \$925. Lauderdale Co., Meridian, 601-678-1692.

15 HP Johnson outboard, electric start, long shaft with wiring harness, 6 HP Johnson motor, runs but needs throttle handle, \$600 for both motors. Carroll Co., Greenwood, 662-385-1110 or 662-299-9868.

16' aluminum boat, 4' wide bottom, bat & trailer restored like new, new 25 HP Yamaha, 4 stroke, electric start, \$8,000. Harrison Co., Biloxi, 228-326-8875.

18' Prindle Catamaran, good sails, good trailer, fast & fun, \$2,500. Grenada Co., Duck Hill, 662-809-7245.

12' aluminum flat bottom boat, good cond., \$200. Lowndes Co., Steens, 662-356-6228.

2003 Sea Pro 19' 6" fish/ski boat, 150 Yamaha, saltwater trolling motor, tandem axle aluminum trailer, \$12,000. Lamar Co., Purvis, 601-297-0885.

15' Alweld boat, galvanized trailer, 40 HP Tohatsu motor with electric jack plate, live well, \$6,500. Marion Co., Foxworth, 601-395-7087.

Tracker 175 Pro, 50 HP, trolling motor, 2 Minn Kota 12V anchors, collapsing T-hitch, extendable fishing platform, bimini top & more, perfect cond., \$8,700 OBO. Hinds Co., Clinton, 601-953-4385.

Evinrude Mate 2, 2 HP outboard, good cond., runs, been in long term indoor storage, price is firm, \$400. Pike Co., McComb, 601-730-4504.

1970 Ranger Biat with 50 HP Johnson & trailer, \$750; 1980s fiberglass boat & trailer, does not leak, trailer is good, just needs motor, \$850. Simpson Co., Magee, 601-867-1113.

FISHING TACKLE

Like new Penn Squall 30VSW reel with Penn Senator 3145RS 4/0 6' 6" rod, \$400. Jasper Co., Rose Hill, 985-445-3850, call or text for more info & pictures.

Quit fishing, selling all, 7 life jackets, 9 rods & reels, anchors, 2 tackle boxes with hooks, etc., & much more, \$500 cash. Lee Co., Tupelo, 662-842-3272.

CAMPING & ACCESSORIES

2005 Four Winds Express Lite travel trailer, 28' + hitch - 32', roof needs some repair, shedded several years, no floor damage, \$3,800 OBO. Claiborne Co., Hermanville, 601-672-4621.

RV vehicle observation system by Furrrion Visions model F0S07TAEN, backup camera, 2 side cameras, wireless system, 7" monitor, new in box, \$450. Rankin Co., Brandon, 601-331-8490.

Fifth wheel slider hitch, used to pull camper 4 times, \$400. Rankin Co., Brandon, 662-803-5096.

2003 Fleetwood 20' bumper pull camper, dual axle, new tires, excellent cond., clear title, includes weight distributing hitch, brake controller, new batteries, \$8,500 OBO. Tippah Co., Booneville, 662-663-0116.

2021 Grand Design 23bhe, very well kept, one owner, everything works as it should, outdoor kitchen, call or text for pictures or more info, \$28,500. Chickasaw Co., Woodland, 662-542-1330.

2022 RV Hideout 21' long, single axle, sleeps up to 6, queen bed, 2 bunk beds, power retractable awning 10', kitchen & full bathroom, \$17,500. Simpson Co., Magee, 601-213-7918.

2020 Puma, 28BKS 36', excellent cond., 2 AC's, outside kitchen, large TV, fireplace, large slide, hitch, \$23,500 OBO. Yazoo Co., Yazoo City, 662-998-5330.

Fifth wheel RV sliding hitch, PullRite Supper Glide Model 2900, 18,000#, includes capture plate, 2 bed rails, locking pins, lifting pin/fifth wheel pin lock, \$900. Rankin Co., Brandon, 601-331-8490.

GUNS & ACCESSORIES

Like new Savage msr10 308 Hunter, Nikon 4-12, \$1,500; Glock 34-3, night sights, \$600; New Glock 23-5, \$550. Pearl River Co., Lumberton, 769-456-4285.

Oak gun cabinet, large & heavy, \$300. Rankin Co., Brandon, 601-942-2215.

Remington Sportsman 74 30-06, in good cond., \$550; 2 vintage Weaver "Classic" model 400 four power scopes still in box, never used, \$150 each OBO. Pearl River Co., Carriere, 601-916-5221.

Remington 30-06, Woodmaster, scope, sling, ammo, no scratches, no rust, excellent cond., \$950. Rankin Co., Pearl, 601-383-2315.

Charter Arms .38, SS, 2" barrel, lightweight, \$375; Leupold VXII 4x12x40, \$375; H&S Precision rifle stock, long action Remington, \$300. Pike Co., Summit, 601-341-7874.

Bergara B-14 Hunter 6.5 Creedmoore, excellent cond., \$550 firm; Redfield tracker rifle scope 3x9, \$165. Leflore Co., Greenwood, 662-299-9995.

Henry Big Boy 327 Federal Magnum, 1 year old, like new, only fired few times, with 150 rounds, \$750. Hinds Co., Edwards, 601-831-5401.

Kahr model K9 9mm pistol, stainless steel, in like new cond., made in USA, \$425. Montgomery Co., Winona, 662-283-2862 or 662-273-3085.

Weatherby Mark V Accumark in 30-378 WBY Mag with 3-12x56 Swarovski scope, 28" fluted stainless barrel with factory muzzle brake, \$2,000. Pearl River Co., Carriere, 504-352-3142.

1906 Winchester, thumb trigger, single shot, \$1,000; Antique 22 single shot, \$300; Winchester 22 single shot, \$200. Webster Co., Mathiston, 662-263-6596.

Remington Model 7 Youth 7mm-08 rifle with Burris 3-9x40, \$1,100. Smith Co., Raleigh, 601-697-7329.

New Windham Weaponry made in USA, AR15 223 cal., \$950; New Windham Weaponry made in USA, AR10 308 cal., \$1,225, or trade for 45 cal. pistol. Lamar Co., Lumberton, 601-688-5050.

Sig Sauer SIG 522 with Son Optics scope, folding stock, in excellent cond., feel free to ask for more info, price is firm, \$500. Newton Co., Hickory, 601-604-2750.

Browning X-Bolt Hells Canyon Max LR Ovis Camo 300 Win Mag, \$1,350 OBO; Browning X-Bolt Max LR Stainless 308 Win with Athlon scope, \$1,400 OBO. Lincoln Co., Bogue Chitto, 601-757-1461.

Remington 870 Youth 20 ga., wood, great shape, \$490. Marion Co., Columbia, 601-441-8825.

Armstrong 20P 22lr semi-auto. rifle, \$200; CVA .50 cal. Stalker rifle, \$200; Knight LK-93 .50 cal. rifle with scope, \$200, call for pictures. Walthall Co., Jayess, 601-810-4672.

20 ga. side-by-side coach gun, \$525; 410 ga. side-by-side coach gun, \$525, both guns are Stoeger brand. Pike Co., Ruth, 601-551-2382.

Janssen & Sons double barrel, 21.75" barrels (sawed off), needs some work but looks very good still, Winchester pump shotgun, barrel model 1400, selling both \$225. Madison Co., Jackson, 601-259-1097.

New in the box, Browning Citori Lightning shotguns, 410, 20, 28 & 12 ga., 26" barrels, do not want to separate, \$8,000. Grenada Co., Grenada, 662-417-6379.

1974 Remington 1100 12 ga., 28" modified, vented barrel, very nice, \$700; S&W 4" 38 Special 10-14, like new, with box, \$600. Lawrence Co., Monticello, 601-748-2263.

WWII M1 30 cal. carbine, all original, very good cond., has peep sight, very nice collector's item, \$3,000. Warren Co., Vicksburg, 601-415-8247.

North American Arms 22 Magnum combo, 22 LR & 22 mag cylinders, new in box, carry case, holster, 5 shot 1 5/8" barrel, Rosewood grips, \$275. Covington Co., Sumrall, 601-516-1504.

Gunsmith, vintage to modern, largest parts inventory in central MS, cleaning, repairs, Cerakote, machining, quick turnaround. Madison Co., Madison, 601-707-5713.

Gunsmith services, maintenance, repairs, cleaning, slow rust re-bluing, large parts inventory, S&W, Colt, Ruger, Springfield, Savage, Brownie, Remington, Marlin, Winchester, military firearms. Lauderdale Co., Meridian, 601-479-9383.

HUNTING & FISHING LEASES & MEMBERSHIPS

Jackson Co., Bluff Creek hunting club, still hunting only, 4,500+ acres, camp-house, bunk room, kitchen, TV, 45+ shooting houses with plots, deer/turkey/hogs, \$900. Vancleave, 228-238-4927, ask for Jerry.

Scott Co., Whitetail still hunting club has 2 openings, campsite, water & electricity, stands are first come, first serve, plenty of deer/turkey, \$1,000 per year. Ludlow, 601-900-0158.

MISCELLANEOUS HUNTING ITEMS

Wooden armadillo traps, scented & proven, I have made these & caught over 60 armadillos, may take a while to make & scent, \$175. Jackson Co., Vancleave, 228-297-6630.

Beaver problems? No problem, I have years of experience trapping & dam removal. Clay Co., West Point, 662-418-2493, leave message I will return your call.

Deer hunting shooting houses, 4x6 on 6' treated stand with skids, treated plywood, ladder, plexiglass, painted, camo, \$1,465, also custom built, delivery available, see at www.brown-hillfarm.net. George Co., Lucedale, 601-770-0239.

Texas Hunter fish feeder, automatic/solar powered, 2- 250 lbs., new \$1,550, sale \$1,000 & 1- 70 lbs., new \$1,250, sale \$900. Yalobusha Co., Oakland, 601-540-8548, call or text.

1 pair Bogs boots, "Journeyman" Stmg ST, size 10, 1 pair LaCrosse "Alphaburly Sport, size 11, both brand new, never worn, \$75 each or \$135/both. Wayne Co., Waynesboro, 601-735-3085.

40' CONEX steel shipping container available for sale in Brandon area, \$3,000, can deliver if needed, price will change if delivered. Rankin Co., Brandon, 601-398-5812.

Turkey hunting book, new release "Heroes of the Hardwoods" which was released in December 2023, has hardcover/dust jacket/color with 240 pages, \$35 signed/shipped. Monroe Co., Amory, 662-315-3191.

Hattori Hanzo "Kill Bill" Katana series of 4 (by Houston Katana), Princess, Demon, Oren Ishii & Michael (Budd) Madsten, value \$480, Shinwa Purple Warrior \$95. Pearl River Co., Poplarville, 985-750-4462.

AQUACULTURE

All aquaculture listed in this category must be raised on your farm. No commercial, businesses or dealers are allowed to advertise. Only in-state residents are allowed to advertise within this category.

Bream, \$250/1,000 & up; Channel catfish 5-7 inch, \$450/1,000; Fathead minnows, \$60/1,000; Grass carp, \$8 each, delivery available. Lamar Co., Sumrall, 601-606-3791.

Coppemose & Shellcracker (Red-ear) bream, \$275/1,000 or \$40/100. Greene Co., Sand Hill, 601-270-1268.

Channel catfish, \$400/1,000 & up; Mix bream, \$325/1,000; Fathead minnows, \$80/1,000; Grass carp, \$8.25; Crappie, \$1.75 & up; Bass, \$2.50 & up. Pearl River Co., Lumberton, 601-796-2000.

AQUACULTURE EQUIPMENT

1-ton tractor pull feeder, enclosed bin, in good working cond., pictures available, \$1,000. Humphreys Co., Louise, 662-571-1484.

LIVESTOCK

All livestock must be from bona fide livestock farmers. We cannot accept notices from livestock dealers, order buyers or persons selling on a commission basis. All livestock bought by farmers for resale purposes are not eligible for this free advertising. Only in-state residents are allowed to advertise within this category.

BEEF CATTLE BEEFMASTER

Reg. Beefmaster bulls, cows, heifers & bred heifers, great genetics, lots of Lasater influence, very gentle, member of BBU, pictures available, visitors welcome, \$1,100 & up. Jones Co., Laurel, 601-340-1350.

BLACK ANGUS

Reg. Black Angus bulls, LBW, semen checked, vaccinated, \$2,500 & up. Lafayette Co., Abbeville, 662-701-8182.

Reg. Black Angus bulls, 7-10 months old, vaccinated/wormed, \$1,600-\$2,000. Lee Co., Shannon, 662-397-4763.

12 Reg. Black Angus heifers, 18-24 months old, most are calving in the next 30 days & the younger ones are ready to breed, \$35,000. Lamar Co., Lumberton, 985-637-7538.

3 Reg. Black Angus bulls, 15-16 months old, excellent condition & very gentle, \$2,800. Lincoln Co., Brookhaven, 601-833-8506.

Reg. Black Angus bull, 2 years old, LBW, current on vaccinations, semen tested, \$3,000. Winston Co., Louisville, 662-803-5771.

Black Angus A1 bulls, large frame, LBW, 2 years old, \$3,000-\$4,000. Lee Co., Slatillo, 662-678-3380.

Black Angus bulls & steers, \$1,000 & up, maybe heifers also. Marion Co., Columbia, 601-441-2145.

BRAFORD

24 Braford replacement heifers, 850 lbs. by 5/15/24, currently exposed to LBW Angus bull, 2 rounds modified live virus vaccines, blackleg, wormed, pictures available, \$48,000.

Jefferson Co., Natchez, 601-807-0394.

BRAHMAN

Top quality reg. Red Brahman, best genetics available, 20 excellent reg. Red Brahman bulls available now, LBW, gentle, great for producing F1's, \$2,500 & up. Chickasaw Co., Okolona, 662-401-0304.

Gray Brahman bull, will be 3 years old in July, \$3,000; Red Brahman bull, 4 years old, \$3,000. Jasper Co., Moss, 601-433-3073.

BRANGUS

Reg. Brangus bulls, outstanding genetics, 12-14 months old, veterinarian raised, \$2,500 & up. Paul Drake, DVM, Harrison Co., Gulfport, 228-234-1779.

Reg. Brangus bulls, very gentle, top EPDs, guaranteed, 14-17 months old, raised on grass, Bigtown/Soggy sons, best sound bulls you'll ever own, \$2,700. Pearl River Co., Gumpond, 601-796-9260.

BRAUNVIEH

4 Braunvieh bulls & Braunvieh cross bulls available, will add milk, great udders & muscle to your herd, docile, semen checked, pictures available, \$2,500/up. Simpson Co., Mendenhall, 601-953-7573.

GELBVIEH

Gelbvieh Balancer Stabilizer bulls, red or black, 10-20 months old, gentle, LBW, quality cattle, \$1,500 & up. Yalobusha Co., Water Valley, 662-473-3578 or 662-473-6466.

HEREFORD

Reg. Polled Hereford bull, 3 years old, very gentle, pictures available, \$3,500. Rankin Co., Puckett, 601-622-7335.

Reg. Polled Hereford bulls, 18-24 months old, gentle & good eye pigment, \$2,500 & up. Hancock Co., Picayune, 228-341-3601.

Reg. Horned Hereford bulls, 2 years old, vet checked & ready to go,

Beef

Checkoff

Every time you sell a bovine animal, regardless of age, sex, breed or purpose, \$1 per head is due. Both the seller and the buyer are responsible to have the \$1 per head assessment collected and remitted to the Mississippi Beef Council.

Printable forms at www.msbeef.org.

For more information contact the
Mississippi Beef Council
601-353-4520

\$3,000 & up. Carroll Co., Coila, 662-299-0961.

Reg. Polled Hereford bulls, Remittal/Victor breeding, 21-28 months old, gentle, good quality, \$2,400, also 1-17 month old, \$1,800. Franklin Co., Union Church, 662-251-1336.

Reg. Polled Hereford bulls, 17-18 months old, gentle, nice markings, vaccinated/wormed, DNA tested, pictures available, \$2,000/up each. Franklin Co., Roxie, 504-912-2653.

2 Reg. Polled Hereford bulls, 2 years old, can text pictures & papers, \$2,700 each. Rankin Co., Pelahatchie, 601-278-4748.

Reg. Polled Hereford cattle, heifers & bulls available, \$1,800 & up. Stone Co., Wiggins, 601-928-3828.

SANTA GERTRUDIS

Selection of reg. Santa Gertrudis open heifer & yearling bulls, top bloodlines/EPDs, also Santa Gertrudis/Hereford Star V open heifer & bulls, \$1,000-\$1,500. Hancock Co., Kiln, 228-216-8731.

SIMANGUS

2 Reg. SimAngus black bulls, both 3/4 Simmental & 1/4 Angus, polled, gentle, both 3 years old with papers, vaccinated/wormed, look great, \$4,000 each OBO. Madison Co., Canton, 601-966-4191.

ULTRABLACK

Reg. Ultrablack bulls, outstanding genetics, 12-14 mos. old, veterinarian raised, \$2,500 & up. Paul Drake, DVM, Harrison Co., Gulfport, 228-234-1779.

Reg. Ultrablack bulls, very gentle, top EPDs, guaranteed, 14-17 months old, raised on grass, Bigtown/Soggy sons, best sound bulls you'll ever own, \$2,700. Pearl River Co., Gumpond, 601-796-9260.

OTHER BEEF CATTLE

Calves, various ages, sizes & prices, \$500 & up; Some cows, \$700 & up; Black crossbred & Brahman bulls, \$1,200 & up, no checks. Covington Co., Collins, 601-517-1711.

6 Crossbred cows & 1 Red Angus bull, \$9,500. Covington Co., Seminary, 601-517-5700.

Herd sellout: 40 SimAngus & Brangus cows & 2 reg. bulls, most coming with second calves, 15 are pairs, real set of young cows, \$127,000 cash. Lincoln Co., Wesson, 601-552-9769.

DAIRY CATTLE

Jersey & Holstein steers, \$400 & up, no checks. Covington Co., Collins, 601-517-1711.

Mini Jersey bull, 10 months old, A2A2, \$2,200. Rankin Co., Richland, 601-941-3918, ask for Janet.

GRASS-FED MEATS

USDA grass-fed/grain finished beef, locally raised, no antibiotics/hormones, vacuum sealed & frozen, \$3.50/lb. & up. Lamar Co., Hattiesburg, 601-909-6067, coyotepointmeatcompany.com.

Farm raised choice Angus beef steers for freezer, grass raised & grain finished for 120 days, half, quarters, no antibiotics or hormones, \$3.50-\$3.70/lb. Jackson Co., Vancleave, 228-219-4450.

Farm raised beef, 1/4, 1/2 & whole steers, ready in November, \$3.50/lb. Carroll Co., Carrollton, 662-897-6313.

From our farm to your freezer, raised naturally, grass raised, grain finished, no hormones or antibiotics, aged, shrink wrapped & state inspected, \$3.50/lb. Jones Co., Laurel, 601-369-0683.

Farm to Table beef, high quality grass fed, grain finished beef, you pay us \$1.80/lb. live weight, we take to processor, you pay processing fee. Hinds Co., Raymond, 601-415-6396.

Whole & half hogs & lambs, contact us to make a reservation, \$100 & up. Fair River Farmstead, Lincoln Co., Brookhaven, 601-320-2974.

Grass fed & grain finished beef, half or whole available, \$2.50-\$3/lb. Walthall Co., Tylertown, 601-876-5530.

LIVESTOCK SLAUGHTER

Cutting Edge Meat Company is taking processing dates now, USDA Inspected & Custom Exempt dates available, specialize in beef, pork, goat, sheep & smoked sausage. Greene Co., Leakesville, 601-394-2390.

A Cut Above Processing, full-service slaughter & processing facility offering both custom exempt & USDA processing options to fit your needs. Stone Co., Perkinston, 228-365-9291.

Homestead Farm & Packing, USDA & custom processing plant that specializes in beef & pork processing for your family or for you to sell. George Co., Lucedale, 601-508-7741.

Kased Brothers Halal Meat, USDA inspected slaughterhouse for beef, lamb & goat, we are Halal certified & everything we send out is Halal. Pike Co., Summit, 601-684-0319.

Home Place Pastures, USDA inspected slaughterhouse for beef, pork, lamb & goat. Panola Co., Como, 662-292-5508.

Attala Frozen Foods, USDA inspected slaughterhouse for beef, pork, lamb & goat. Attala Co., Kosciusko, 662-289-2561.

Julie's Pasture to Plate Meat Market & Processing, USDA federal & custom processing, currently accepting dates, full service facility. Pearl River Co., Poplarville, 601-795-0711.

GOATS & SHEEP

4 Female goats, 1 Boer & 3 Pygmy/Boer mix, \$120; 3 Polled Boer bucks, pet-friendly, \$150; 2- 4 month old Pygmy bucks, \$130/\$150. Scott Co., Forest, 601-513-2660.

Nigerian Dwarf goats, 2 months old, several to choose from, \$100 & up. Forrest Co., Wiggins, 601-270-2004.

Nigerian/Pygmy cross bucks, born Jan. 2024 & 1 doe born Jan. 2023, can send pictures via text or email, \$125 OBO. Hinds Co., Jackson, 601-906-1109.

TexMaster doelings, 1 year old, \$900 for 6 or \$200 each; Herd buck, 5 years old, \$400. Amite Co., Summit, 601-341-4550.

3/4 Boer & 1/4 Nubian billy goat, well fed, 1 year old 4/8/24, serviced 1 season, \$200. Oktibbeha Co., Starkville, 662-769-1095.

Katahdin & Royal White Katahdin cross sheep, 5 grown ewes, 10 lambs & 2 herd rams available, top quality stock, \$100 & up. Carroll Co., Carrollton, 662-809-0330.

Pinto buck, 3 years old, polled, black & white in color, raised as a pet, very friendly, \$150. Scott Co., Forest, 601-513-2660.

2 Nigerian Dwarf pet wethers, text for pictures, \$125 each or \$200 for both. Chickasaw Co., Woodland, 662-542-1330.

3 Pygmy males, 3 months, 1 year & 4 years old, \$75 each; Female, 3 months old, \$125, pictures available. Madison Co., Canton, 662-392-0844.

12 Goats, male & female, all colors/ages available, \$100 each. Scott Co., Lena, 601-900-7308.

REMEMBER

It's FREE to advertise in the Mississippi Market Bulletin, the only requirement is you have to be a subscriber.

You are only allowed to advertise TWO ADS throughout the entire Mississippi Market Bulletin, only ONE AD per category.

All classified ads must be 30-words or less.

Subscribe online & place ads: www.msmarketbulletin.org

FB Nigerian Dwarfs, 4 does & 5 bucks available, need gone, priced to sell, \$65-\$125. Lamar Co., Sumrall, 601-606-2025.

Nubian buck, black & white spotted, polled, 2 years old, \$250. Lincoln Co., Brookhaven, 601-754-6725.

Kiko bucklings, 3 1/2 months old, healthy, gentle, ready to go, 2 were bottle fed, \$75. Yazoo Co., Bentonla, 662-590-2527.

2 Reg. Nubian billy goats, 1 & 4 years old, more info & pictures available, \$200 each. Leake Co., Lena, 601-540-4860, leave message or text.

Commercial Spanish cross & other crossbred goats/hair sheep, ages range 7 months to 2 years old, some with kids, vaccinated, pictures available, \$125/up. Simpson Co., Mendenhall, 601-953-7573.

Spanish/Pygmy buck, 1 year old, well built & handsome, loves the ladies, a little feisty, \$100. Harrison Co., Lyman, text 228-596-7338.

4 Boer cross does, various ages, \$75 & up; Wooden fitting stand with walk-on ramp, adjustable yoke, pictures available, \$60. Humphreys Co., Louise, 662-571-1484.

Nigerian Dwarf buck, 3 years old, proven sire, blue eyes, in clean & tested herd, all vaccines up to date, gentle, \$100. Tate Co., Senatobia, 662-750-4148.

Boer mix goats, born Feb. 2024, red, black/white & red/white, male/female, \$120-\$150; Red Boer mix doe, red male/female kids, \$400/all. Forrest Co., Hattiesburg, 601-447-8274.

RABBITS

TAMUK gray buck, 9 months old, ISO TAMUK female adult, also New Zealand adult doe, \$30. Lauderdale Co., Meridian, 601-917-6337.

Holland Lop rabbits, breeding stock or young ones, tricolored, easy to handle, well socialized, males \$30, females \$40. George Co., Lucedale, 601-947-3798.

Holland Lops, show quality, in rare colors, bunnies & does available, \$25. Copiah Co., Hazlehurst, 601-650-2790, email: kharisma@juno.com.

Little "Hops" rabbits: Californians & Dutch, breeding stock or small ones, available year round, \$20 & up. Rankin Co., Pearl, 601-955-3800.

Rabbits, New Zealand Whites & New Zealand White/Rex crosses available, \$15 & up. Marshall Co., Byhalia, 662-850-1170.

SWINE

Mini Pot-bellied pigs, \$30 OBO. Pearl River Co., Poplarville, 601-795-6397.

5 Hampshire feeder pigs, \$85 each; Hampshire boar hog, \$225. Rankin Co., Pearl, 601-260-5706.

Feeder pigs, will be ready to butcher in July, born 1/9/24, \$75. Noxubee Co., Macon, 662-570-8858.

1/2 Hereford, 1/4 Spot & 1/4 Large Black piglets, 2 different litters available, born 2/17/24 & 3/3/24, \$60. Covington Co., Seminary, 601-516-2162.

KuneKune sow, 2 years old, has had 2 great litters of piglets, beautiful colors, \$200; Piglets, \$100. Jones Co., Ellisville, 601-498-9156.

HORSES, MULES & PONIES

We cannot accept notices from horse dealers, order buyers or persons selling on a commission basis

All listings of horses and mules must be accompanied by a statement from the seller that he agrees to furnish the buyer a copy of the original negative Coggins test for Equine Infectious Anemia (E.I.A.) that was performed within the past 12 months prior to sale on horses, mules and ponies, except nursing foals.

Only in-state residents are allowed to advertise within this category.

AMERICAN QUARTER HORSES

Grade QH 7 yr. old bay gelding, 15 H, stands for farrier, loads/unloads easily, great potential, needs experienced rider, can text for photos, \$3,500. Lauderdale Co., Meridian, 251-391-8766.

STANDARDBREDS

Standardbred gelding, 13 yrs. old, 15.1 H, TSS, works single & double, \$2,750 OBO, no phone, contact Jacob Hostetler, 1196 Houpt Road, Pontotoc, MS 38863. Pontotoc County.

TENNESSEE WALKING HORSES

Reg. TWH filly, 2 yrs. old, not broke to ride, red/white paint, \$1,550. Prentiss Co., Booneville, 662-416-0745.

OTHER HORSES

Gaited red/white gelding, born 4/17/21, 15 H, gentle, easy to catch, broke to ride, \$3,500. Pontotoc Co., Thaxton, 662-419-1719.

DOGS

**ONLY HERDING,
HUNTING & WORKING
Dog Breeds Will Be Published.**

All dogs must be purebred. Mix breed dogs will not be allowed to advertise. Each subscriber is allowed to advertise only two dog breeds. We cannot accept ads from any individual who is engaged in any type of puppy mill operation or acts as a dealer, broker, buncher, or agent in the business of buying and selling dogs and/or bred solely for profit rather than protection of breed integrity (as defined by the United States Department of Agriculture). The Herding, Working & Hunting dog breeds list utilized by the *Mississippi Market Bulletin* is endorsed by the Mississippi State Veterinarian and the Mississippi Department of Agriculture and Commerce. It is the sole discretion of the *Mississippi Market Bulletin* to accept or reject any dog ad for submission.

ANATOLIAN SHEPHERDS

Anatolian Shepherd puppies, born 1/6/24, raised with goats, up to date on shots/worming, \$350. Noxubee Co., Macon, 662-570-8858.

Anatolian Shepherd puppies, sire & dam on site, whelped 3/21/24, available May 1, \$600. Bolivar Co., Greenville, 662-822-1964.

Anatolian Shepherds, Deep South Kikos Farm has young/mature dogs ready for work, they are raised with cattle/goats, we guarantee our animals, \$800. Perry Co., Brooklyn, 601-549-6914, call/text.

AUSTRALIAN CATTLE DOGS

Blue & Red Heeler adults, very friendly, have not been around cattle, breeding pairs, \$200/pair. Simpson Co., Magee, 601-849-2597.

AUSTRALIAN SHEPHERDS

CKC Mini Australian Shepherds, mature at 16-17", tails docked, first shots/wormed, lots of blue eyes, ready now, merles \$600, tricolored \$500. Jefferson Davis Co., Carson, 601-441-3075.

ASDR Standard Australian Shepherd female, red, born 9/7/22, up to date on shots/wormer, text for pictures, \$200. George Co., Lucedale, 601-508-1176.

CKC Standard Australian Shepherd puppies, born 3/1/24, black/red tris available, males & females, current

on shots/worming, \$200 each. Tippah Co., Ripley, 662-882-1132.

PB Australian Shepherd puppies, 4 males & 5 females, docked tail, first shots/wormed, born 2/18/24, merles \$200 each, solid colors \$150 each. Smith Co., Raleigh, 601-507-0287.

PB Australian Shepherd puppies, red/white males & females available, have had age appropriate vaccinations/worming, \$300-\$400. Scott Co., Morton, 601-479-2899.

Standard Australian Shepherd puppies, not reg., great for herding, ready to go 4/22/24, merles \$450, tris \$400. Greene Co., Richton, 601-689-7265.

BEAGLES

Beagle rabbit dogs, reg. or not, 1 1/2 to 3 years old, well trained, easy to handle once used to you, see hunt in rabbit pen, \$450 & up. Claiborne Co., Hermanville, text 601-672-4621.

BELGIAN MALINOIS

AKC Belgian Malinois puppies, easily trained, well socialized, excellent bloodlines, \$2,000. Pearl River Co., Poplarville, 601-299-0264.

CollierKennels.com offering Belgian Malinois puppies, long & short term boarding, house breaking, puppy training & private lessons, 50+ years experience, \$45-\$1,500. Lincoln Co., Brookhaven, 940-255-7308.

BLOODHOUNDS

AKC Bloodhound puppies, born 1/24/24, vet checked, shots/wormed, both parents on site, \$400. Smith Co., Raleigh, 601-507-4817.

AKC Bloodhound puppies, beautiful, 3 left in first litter, 6 in second, all colors, will hold until paid, Teoc bloodlines, \$650/up. Simpson Co., Mendenhall, 601-421-9209, please text.

BORDER COLLIES

Border Collie puppies, born 3/17/24, out of young started dogs, grand-parents are nationally competitive trial dogs, mother works cattle, sire is sheep trail dog, \$800. Oktibbeha Co., Starkville, 662-617-1543.

BOXERS

Boxer female, 1 1/2 years old, good with chickens/goats, house broken, guard dog, likes her people but not strangers, spayed, fawn color, healthy, \$200 OBO. Lowndes Co., Columbus, 662-574-6215.

COCKER SPANIELS

CKC Cocker Spaniel male puppy, born 2/13/24, tail docked, dewclaws removed, up to date on first shots/worming, text for pictures, \$500. George Co., Lucedale, 601-508-1176.

COONHOUNDS

UKC Plott Hound puppies, good bloodlines, ready to go now, \$200; UKC Hound male, 10 months old, \$300. Jones Co., Sandersville, 601-422-3030.

UKC Bluetick Coonhound female, 8 weeks old, has good pedigree, \$250; Coonhound female, 7 years old, good pedigree, \$100. Prentiss Co., Boonville, 662-416-0745, call or text.

Bluetick Coonhound male, large & handsome, just eats too much, will make excellent hunting dog with some time, \$350. Pearl River Co., Carriere, 601-916-5221.

Bluetick Coonhound female, unreg., 1 1/2 years old, not spayed, \$100. Scott Co., Ludlow, 601-507-1406, call or text.

English Coonhound, \$250; Redbone Coonhound, Outlaw bloodline, \$500. Monroe Co., Aberdeen, 662-436-0571.

CORGIS

AKC Pembroke Welsh Corgi females, 3 tris & 1 sable available, whelped 2/13/24, current on shots/worming, beautiful markings, excellent disposition, socialized, \$1,000. Winston Co., Noxapater, 662-803-3144.

CKC American Corgi puppies, DM not at risk, well socialized, red merles, blue merles, sables & tris available, 1 year health guarantee, \$800-\$1,500. Hinds Co., Jackson, 601-415-1494, text.

CURS

5 Black Mouth Cur male puppies, 8 weeks old, vaccinated/wormed, no papers, \$150. Forrest Co., Lumberton, 601-928-5366.

FEISTS

Feist puppies, squirrel dog stock, parents on property, \$50 each. Hinds Co., Utica, 601-940-7497, call or text.

Mountain Feist puppies, dad is NKC with grand champions on both sides, first shots, brindle & brown/white available, ready to go, \$150. Rankin Co., Florence, 601-845-2113.

CollierKennels.com offering Feist puppies, parents on site, hunting dogs, \$150. Lincoln Co., Brookhaven, 940-255-7308.

GERMAN SHEPHERDS

AKC German Shepherd puppies, European bloodline, first shots/wormed, black, tan & golden colors, born 2/7/24, ready, 3 males & 4 females, pictures available, \$300-\$400. Itawamba Co., Fulton, 256-275-6412.

AKC European German Shepherd puppies, great family dogs, well socialized & pups get along well with others, \$2,000. Pearl River Co., Poplarville, 601-299-0264.

GERMAN SHORTHAIRED POINTERS

AKC German Shorthaired Pointer puppies, born 3/7/24, tails docked, dewclaws removed, current on all shots, ready first week of May, pictures upon request, \$800. Choctaw Co., Eupora, 662-285-8131 or 662-552-1212.

AKC German Shorthaired Pointer puppies, liver roan & spotted, born 3/8/24, 5 females & 3 males, pictures available upon request, \$1,000. Warren Co., Vicksburg, 601-953-9738.

GOLDEN RETRIEVERS

CKC Golden Retriever puppies, 2 females left, born 1/23/24, first shots/wormed, can send pictures via text or email, \$550. Hinds Co., Jackson, 601-906-1109.

AKC Golden Retriever puppies, born 3/12/24, both parents on site, will have shots/worming, ready 5/15/24, will make great graduation presents, \$600. Walthall Co., Tylertown, 601-876-8999.

CKC Golden Retriever puppies, born 2/26/24, up to date on shots & exam, well socialized, \$600. Oktibbeha Co., Starkville, 662-552-4534.

GREAT PYRENEES

PB Great Pyrenees puppies, will be ready 4/4/24, raised with goats, 3 white females & 2 badger marked males available, current on shots/worming, \$50. Hancock Co., Perkinston, 228-234-3174.

Great Pyrenees dogs, 1 reg. male & 1 unreg. female, 10 months old, had all shots, \$100 each. Leake Co., Lena, 601-259-3134.

Great Pyrenees puppies, raised with sheep, stay in barn & hang around sheep, males & females available, weaned, ready to go, \$125. Smith Co., Forest, 601-507-4602.

Great Pyrenees male, 2 years old, all vet shots/heartworm/tick & flea regiment, \$777.77 or willing to trade for rifle, shotgun or pistol. Hinds Co., Terry, 601-882-7389.

JACK RUSSELL TERRIERS

CKC Jack Russell Terrier stud looking for new home, 5 year old shorty, energetic & super friendly, will tree a squirrel, \$250 OBO. Lauderdale Co., Collinsville, 601-692-7792.

PB Jack Russell Terrier female, 2 1/2 years old, brown/black/white, short legged, not spayed, excellent mother, friendly/playful with children, text

for pictures, \$200. Marion Co., Columbia, 601-441-7119.

LABRADOR RETRIEVERS

AKC Labrador Retrievers, white, reduced price due to an unforeseen circumstance, this is a deal, hunting & pet stock, text for pictures, \$800. Holmes Co., Lexington, 601-201-9634.

RAT TERRIERS

UKC Rat Terrier males, 2 chocolate tris available, charting 8-12 lbs., age appropriate shots/worming, ready to go, \$550. Scott Co., Forest, 601-507-9063.

CKC Rat Terrier puppies, beautiful black/white tri, brown/white 12"-14" at withers when mature, parents on site, pictures/references available, \$350-\$400. Rankin Co., Johns, 601-573-9166 or 601-825-0676.

ROTTWEILERS

CKC Rottweiler puppies, German bloodline, tails & dewclaws done, first shots/wormed, XL parents on site, pictures/videos available upon request, \$700. Marion Co., Columbia, 601-447-3433.

SCOTTISH TERRIERS

AKC Scottish Terrier puppies, born 2/17/24, first shots/worming, descendants of President Franklin D. Roosevelt's Scottie named Fala, black males, \$1,500. Rankin Co., Brandon, 601-540-7282.

SHETLAND SHEEPDOGS

5 CKC Shetland Sheepdog female puppies, also known as 'Shelties,' born 3/12/24 & 3/25/24, \$500 each. Monroe Co., Prairie, 662-319-1410.

STANDARD POODLES

AKC Standard Poodle puppies, born 2/14/24, 4 males & 2 females, red & apricot available, first shots/wormed, AKC show grand champion bloodline, \$1,500. Perry Co., Beaumont, 601-270-8079.

WEIMARANERS

CKC Weimaraner puppies, beautiful silver & blue males/females available, both parents on site, pictures & references available, \$750. Simpson Co., Magee, 601-382-9168, call or text.

DOGS AT STUD

AKC Australian Shepherd, black merle, beautiful markings, pictures available, stud fee: \$400. Neshoba Co., Philadelphia, 601-562-8022.

PB Labrador Retriever, black, very good nature, easy to train, stud fee: one puppy, pick of the litter. Holmes Co., Durant, 601-503-7334.

DOG HANDLING
& SUPPLIES

Sharpening/repair of small/large animal clippers & blades, also sharpening of all animal grooming shears & scissors (dogs, cattle, horses, sheep, goats, humans), quick turnaround. Amite Co., Liberty, 601-657-2277.

Pointing dog & obedience training, \$650/month; Short term boarding, \$10/day; Long term boarding, \$200/month, medium & large size dogs

only. Lee Co., Shannon, 662-767-8851.

6- Double 2'x3'x8' & 4- double 3'x3'x8' dog cages on legs, all with whelping boxes, \$450 each, no phone, contact Jacob Gingerich, 4565 Salmon Road, Randolph, MS, 38864. Pontotoc County.

Transport cart for litter of puppies/ rabbits/any animal, call for pictures, \$40; 3 Puppy/rabbit/chicken coops, \$30 each, dog crates also. Leake Co., Carthage, 662-590-6500.

Metro Master Gardeners
Annual Plant Sale

By Laura Lillard
Metro Master Gardener

The Metro Master Gardeners will hold their annual plant sale at Mynelle Gardens, 4736 Clinton Boulevard, Jackson, MS, on Saturday, April 27, 2024. The plant sale begins at 8:00 a.m. and will end at noon. Cash and checks are welcome (no credit cards).

Members of the Metro Master Gardeners come from all over the Jackson metropolitan area. The Master Gardeners have propagated a variety of native and naturalized heirloom plants, perennials, shrubs and trees that are perfectly suited to our southern soils and climate. Many of these heirloom plants have come from project and demonstration gardens located throughout the metro Jackson area. *Due to the last 12-15 months of extreme weather, the quantity and variety of plants may be more limited than in previous years.*

Master Gardeners are a volunteer branch of the Mississippi State University Extension Service that advises and educates the public on gardening and horticulture issues. Members of the Metro Master Gardeners will be on hand at the plant sale to answer gardening questions.

After finalizing their plant purchases, shoppers are invited to enjoy a free



stroll through Mynelle Gardens.

Proceeds from the plant sale go to support gardening projects located at Mynelle Gardens, the Doctor's Herb Garden at the Mississippi Agriculture & Forestry Museum, the Oaks Home on Jefferson Street, Greenwood Cemetery, Clinton Visitors Center, and various demonstration, educational and scholarship projects in the metro Jackson area.

If you want additional information, would like to schedule an interview with Master Gardeners, or capture them in action at Mynelle Gardens, please contact Laura Lillard at 601-613-5223 or sadecat17@comcast.net. "Like" Metro Master Gardeners on Facebook for updates.



PLANT SALE

Sponsored by:
Metro Master Gardeners

Saturday, April 27, 2024
8:00 a.m. until 12:00 noon

At
Mynelle Gardens
4736 Clinton Boulevard
Jackson, Mississippi 39209
(601) 960-1894



Equipment
Auctions

Live & Online Equipment Auction
Sat., Apr. 27, 2024 at 9:00 AM
1931 Industrial Park Road, Sardis, MS (Panola Co.)
Five Star Auction, MS Lic. #1670

Selling tractors, construction equipment, trailers, field equipment, hay equipment & much more. Zero commission for consignors. For consignment opportunities & more information call 662-707-0070 or visit www.fivestarauction.com.

Farm & Construction Auction
Sat., May 4, 2024 at 9:00 AM
2749 Hwy. 21, Forest, MS (Scott Co.)
Corbert D. Hollingsworth, MS Lic. #142

Selling construction equipment, heavy duty trucks & trailers, tractors, farm implements & equipment, vehicles, shop tools & much more. For more information call 601-469-2705 or 601-954-4230. Listing, online bidding & terms will be available at www.HollingsworthAuctions.com.

Equipment & Miscellaneous Auction
Sat., May 11, 2024 at 10:00 AM
3714 Mt. Moriah Road, Edwards, MS (Hinds Co.)
Auctioneer Eric Moncil, MS Lic. #1541

Taking consignments now. For more information call Richard Crowe at 601-529-5360.

– Alliance Field Day –


“Building Climate Resilience Through Sustainable Agriculture and Community Partnerships, High Tunnel Production, Spring Planting, Mulch/Bed Laying Demonstration, and More”



Friday, April 19, 2024
Registration: 10:00AM - Program: 10:30AM to 2:30PM

BREWER VEGETABLE FARM
(Greenwood, Mississippi)

FREE LUNCH WILL BE PROVIDED.
There is NO COST to attend, but **PRE-REGISTRATION IS REQUIRED!**
YOU CAN ALSO PRE-REGISTER BY SENDING AN EMAIL WITH THE NAME(S) AND A PHONE NUMBER TO:
allianceofsustainablefarms@gmail.com
For more information contact: James Brewer at (662) 299-7247



WEEKLY LIVESTOCK AUCTIONS & SALES



CATTLE AUCTIONS

Cattlemen's Stockyard, LLC
Sale Day - Monday - 12:30 PM
West Point, MS (Clay Co.)
Ph: 662-495-1178

East MS Farmers Livestock Co.
Sale Day - Tuesday - 12:00 PM
Philadelphia, MS (Neshoba Co.)
Ph: 601-656-6732

Glenwild Stockyard
Sale Day - Monday - 1:00 PM
Grenada, MS (Grenada Co.)
Ph: 662-226-1900

Johnson Stockyard
Sale Day - Wednesday - 1:00 PM
Kosciusko, MS (Attala Co.)
Ph: 662-289-9727

Lincoln Co. L/S Commission Co.
Sale Day - Tuesday - 1:00 PM
Brookhaven, MS (Lincoln Co.)
Ph: 601-833-2654

Lipscomb Brothers Livestock Market
Sale Day - Wednesday - 1:00 PM
Como, MS (Panola Co.)
Ph: 662-526-5362

Livestock Producers Assn. #1
Sale Day - Tuesday - 12:15 PM
Tylertown, MS (Walthall Co.)
Ph: 601-876-3465

Lucedale Livestock Producers
Sale Day - Wednesday - 11:00 AM
Lucedale, MS (George Co.)
Ph: 601-947-3352

Macon Stockyards, Inc.
Sale Day - Monday - 12:30 PM
Macon, MS (Noxubee Co.)
Ph: 662-726-5153

Meridian Stockyards
Sale Day - Monday - 12:00 PM
Meridian, MS (Lauderdale Co.)
Ph: 601-482-7275

Peoples Livestock Auction
Sale Day - Monday - 1:00 PM
Houston, MS (Chickasaw Co.)
Ph: 662-456-3018

Pontotoc Stockyard, Inc.
Sale Day - Saturday - 11:00 AM
Pontotoc, MS (Pontotoc Co.)
Ph: 662-489-4385

Southeast Mississippi Livestock
Sale Day - Monday - 11:30 AM
Hattiesburg, MS (Forrest Co.)
Ph: 601-268-2587

Tadlock Stockyard
Sale Day - Monday - 12:00 PM
Forest, MS (Scott Co.)
Ph: 601-469-3642

Walnut Sales Co.
Sale Day - Saturday - 1:00 PM
Walnut, MS (Tippah Co.)
Ph: 662-223-4351

Winona Stockyard
Sale Day - Tuesday - 12:00 PM
Winona, MS (Montgomery Co.)
Ph: 662-283-1652

ORDER BUYERS (No Commission or Shrink)

Central Mississippi Cattle Buyers
Purchasing Cattle on Mondays
7:30 AM - 12:00 PM
Pickens, MS (Holmes Co.)
Ph: 601-540-8180 or 601-315-1009

Cochran Cattle Buying Station
Purchasing Cattle on Saturdays
7:00 AM - 12:00 PM
McLain, MS (Greene Co.)
Ph: 601-525-6463 or 601-258-2263

Lee Edens Cattle Company
Purchasing Cattle Mon. thru Wed.
Amory, MS (Monroe Co.)
Ph: 662-791-1531 or 662-617-9057

Morgan Farms Stocker Cattle
Purchasing Cattle on Tuesdays
7:00 AM - 11:00 AM
Purchasing Cattle on Monday,
Wednesday, Thursday & Friday
by Appointment
Sumrall, MS (Lamar Co.)
Ph: 601-214-8939

Parker Livestock Buying Station
Purchasing Cattle at 2 Locations
Mondays 7:30 AM - 11:30 AM
Seminary, MS (Covington Co.)
Tuesday's 7:30 AM - 11:30 AM
Lumberton, MS (Pearl River Co.)
Ph: 601-722-9081

Pearl River County Cattle Buyers
Purchasing Cattle on Wednesdays
8:00 AM - 12:00 PM
Poplarville, MS (Pearl River Co.)
Ph: 601-315-1009 or 601-382-5532

Simpson County Cattle Buyers
Purchasing Cattle on Mondays
7:00 AM - 12:00 PM
Magee, MS (Simpson Co.)
Ph: 601-315-1009

Smith & Rogers Cattle Buyers
Purchasing Cattle on Saturdays
7:00 AM - 12:00 PM
Brookhaven, MS (Lincoln Co.)
Ph: 601-754-5505 or 601-754-8116

HORSE AUCTIONS

Johnson Stockyard
4th Sat. of each month
Tack 12:00 PM - Horses 5:00 PM
Kosciusko, MS (Attala Co.)
Ph: 662-289-9727

Mize Horse Sale
3rd & 5th Sat. of each month
Tack 10:00 AM - Horses 1:00 PM
Mize, MS (Smith Co.)
Ph: 601-765-3530 or 601-517-7777

North MS Stockyard
1st Sat. of each month
Tack 10:00 AM - Horses 2:00 PM
Thaxton, MS (Pontotoc Co.)
Ph: 662-488-1372

Pontotoc Sockyard, Inc.
Every Saturday - 11:00 AM
Pontotoc, MS (Pontotoc Co.)
Ph: 662-489-4385

Southern States Equine
at Magnolia Stockyards
2nd Sat. of each month
Tack 10:00 AM - Horses 1:00 PM
Carthage, MS (Leake Co.)
Ph: 601-267-7884 or 601-672-2978

T. Smith Livestock
1st Saturday of Every Month
Tack 10:30 AM - Horses 1:30 PM
Hattiesburg, MS (Forrest Co.)
Ph: 601-583-0828 or 601-544-6595

GOAT & SHEEP AUCTIONS

Meridian Stockyard, Inc.
1st Mon. of each month - 11:00 AM
Meridian, MS (Lauderdale Co.)
Ph: 601-482-7275

North MS Stockyard
1st Sat. of each month - 1:00 PM
Thaxton, MS (Pontotoc Co.)
Ph: 662-488-1372

Pontotoc Stockyard, Inc.
Every Saturday - 11:00 AM
Pontotoc, MS (Pontotoc Co.)
Ph: 662-489-4385

Southeast Mississippi Livestock
Sale Day - Monday - 9:30 AM
Hattiesburg, MS (Forrest Co.)
Ph: 601-268-2587

Trade Day Auction
4th Sat. of each month
Philadelphia, MS (Neshoba Co.)
Ph: 601-575-5059

Y & R Livestock Sales
Every 3rd & 5th Sat. - 1:00 PM
Booneville, MS (Tippah Co.)
Ph: 662-891-6554 or 662-720-6006

UPCOMING LIVESTOCK SHOWS & SALES

Mississippi Board of Animal Health Regulations
require that all public sales of livestock and poultry (even if they are on private property) must have prior approval by the State Veterinarian 30-days prior to sale. For more information, call 1-888-646-8731.

HORSE SHOWS & SALES

Lawrence County Miniature Horse Association Shows
1555 F.E. Sellers Hwy., Monticello, MS (Lawrence Co.)
Apr. 27; May 18; June 29, 2024

Shows start at 11:00 a.m. For more information call 601-259-4714.

BARREL RACES, ROPINGS & RODEOS

Lee Earls Team Penning
Fri.-Sat., Apr. 19-20, 2024
Lincoln Civic Center
Brookhaven, MS (Lincoln Co.)
Ph: 601-823-9064

Dixie Challenge
Thu.-Sun., Apr. 25-28, 2024
Kirk Fordice Equine Center
Jackson, MS (Hinds Co.)
Ph: 601-961-4000

Cinco De Mayo Barrel Bash
5-D Multi-Race
Fri.-Sun., Apr. 26-28, 2024
Forrest Co. Multipurpose Center
Hattiesburg, MS (Forrest Co.)
Ph: 601-583-7500

Mid-South Little Britches Rodeo
Sat.-Sun., Apr. 27-28, 2024
Rankin Co. Multi-Purpose Pavilion
Brandon, MS (Rankin Co.)
Ph: 601-278-3857

Twisted Sisters Barrel Race
Tue., Apr. 30, 2024
Lincoln Civic Center
Brookhaven, MS (Lincoln Co.)
Ph: 601-823-9064

Bulls, Bands & Barrels
Sat., May 4, 2024
Forrest Co. Multipurpose Center
Hattiesburg, MS (Forrest Co.)
Ph: 601-583-7500

SWMSHA Barrel Race
Sat., May 4, 2024
Lincoln Civic Center
Brookhaven, MS (Lincoln Co.)
Ph: 601-823-9064

Twisted Sisters Barrel Race
Thu., May 9, 2024
Lincoln Civic Center
Brookhaven, MS (Lincoln Co.)
Ph: 601-823-9064

NBHA
Sat., May 18, 2024
Rankin Co. Multi-Purpose Pavilion
Brandon, MS (Rankin Co.)
Ph: 601-278-3857


Mid-South Little Britches Rodeo
Sat.-Sun., May 25-26, 2024
Rankin Co. Multi-Purpose Pavilion
Brandon, MS (Rankin Co.)
Ph: 601-278-3857

MISSISSIPPI MARKET BULLETIN



Subscribe, Renew and Place Ads
www.msmarketbulletin.org

FARM
MARKET
REPORT



LIVESTOCK

These are overall statewide averages (price per cwt)
Prices reported the week of 3/29/2024
Cattle Receipts 6,851 - Last Year 6,300
For current cattle prices call 601-359-1159

Steers (based on medium & large 1 & 2):

200-300 lbs.....\$330.00-\$460.00

300-400 lbs.....\$310.00-\$400.00

400-500 lbs.....\$285.00-\$355.00

500-600 lbs.....\$262.00-\$340.00

600-700 lbs.....\$240.00-\$300.00

700-800 lbs.....\$220.00-\$245.00

Heifers (based on medium & large 1 & 2):

200-300 lbs.....\$300.00-\$365.00

300-400 lbs.....\$270.00-\$365.00

400-500 lbs.....\$250.00-\$338.00

500-600 lbs.....\$230.00-\$285.00

600-700 lbs.....\$200.00-\$258.00

700-800 lbs.....\$200.00-\$237.00

Slaughter Cows:

850-1,200 lbs.....\$110.00-\$145.00

Slaughter Bulls:

1,500-2,500 lbs.....\$122.00-\$161.00

Cow/Calf Pairs (based on medium & large):

2-8 years old, with 100-300 lb. calves.....\$1,650.00-\$3,300.00

Replacement Cows (based on medium & large):

2-8 years old, 2-8 mos. bred.....\$1,000.00-\$2,300.00

POULTRY

Prices reported the week of 3/29/2024
For current poultry/egg prices call 404-562-5850

Broilers/Fryers: (¢ per lb. FOB-Dock, Mississippi Producers)

93.00-159.00¢

Eggs: (¢ per dozen, based on USDA Grade A)

XL. 256-259-¢, LG. 253-256¢, MED. 241-245¢

CATFISH

Reporting Pounds Processed
for the Month Ending: February 2024

Fish Processed 0 - 4 lbs. (foodservice/retail markets)

Average Price (delivered to plant): 1.13¢ per lb.

Fish Processed over 4 lbs. (large whole fish/round and gut market)

Average Price (delivered to plant): 92¢ per lb.

CROPS

Prices reported the week of 3/29/2024
For current crop prices call 601-359-1120.


Cotton (¢ per lb).....(May) 92.80

Soybeans (\$ per bushel).....12.02

Wheat (\$ per bushel).....5.39

Corn (\$ per bushel).....4.34


Rice (¢ per cwt.).....(May) 16.29



TimberMart-South

Mississippi Stumpage Prices Quarterly

4th Quarter 2023



The timber report includes the average stumpage prices for the state of Mississippi. Many variables, such as raw material demand, mill inventories, buyer competition, quality, topography and weather, play key roles in determining local prices. Therefore, the *Mississippi Market Bulletin* recommends forest landowners consult with a local forester when considering the sale of timber. The timber prices below are published with permission from TimberMart-South.com.

Product	Current Quarter State Average	Last Quarter 2Q-2023 up/down	Previous Year 3Q-2022 up/down
Pine Sawtimber	\$25.77	\$24.72 +1.05	\$22.78 +2.99
Pine Chip-n-Saw	\$15.69	\$16.10 -0.41	\$13.89 +1.80
Pine Pulpwood	\$4.29	\$4.52 -0.23	\$4.58 -0.29
Mixed Hardwood Sawtimber	\$37.15	\$35.53 +1.62	\$40.72 -3.57
Hardwood Pulpwood	\$10.84	\$10.80 -0.04	\$16.37 -5.53

AGRICULTURE


Mississippi's #1 Industry!

\$8.76
Billion

2023 farm-gate
value of ag &
forestry production

\$16.05
Billion

2020 value-added
to the MS economy
by ag & forestry
production



Source: Mississippi State University

Mississippi Department of Agriculture and Commerce

www.mdac.ms.gov

*** UPCOMING EVENTS ***

Allison’s Wells Quilt Show- Thu.-Sat., Apr. 18-20, 2024, at 147 North Union Street, Canton, MS (Madison Co.) west side of the square. Thu.-Fri., 9 a.m. - 4 p.m. Sat., 9 a.m. - 1 p.m. No charge. For more information call 601-859-1307.

Gulf Coast Military Collectors & Antique Arms Show- Fri.-Sat., Apr. 19-20, 2024, at the Joppa Shriner’s Center, 13280 Shriner’s Blvd., Biloxi, MS (Harrison Co.) Show hours Fri. 11 a.m. - 5 p.m. & Sat. 9 a.m. - 4 p.m. Historical military artifacts from all periods and wars bought, sold, traded & exhibited. Firearms, bayonets, daggers, uniforms, helmets, medals, insignia, patches, flags, books, etc. For more information call 228-224-1120 or terrell.hamilton@gmail.com.

Rankin County Master Gardeners Plant Sale- Sat., Apr. 20, 2024, 8:00 a.m. until noon, Rankin County Extension Building, 601 Marquette Road, Brandon, MS (Rankin Co.) Free admission. For more information call 601-594-6919.

Jackson Gun Show- Sat.-Sun., Apr. 20-21, 2024, Mississippi Trade Mart, MS Fairgrounds, 1207 Mississippi Street, Jackson, MS (Hinds Co.) Show hours: Sat., 9 a.m.- 5 p.m., & Sun., 10 a.m. - 5 p.m. 8’ tables \$85 each. Buy, sell or trade. Free parking and hourly door prizes. Exhibits may include: guns, ammo, knives, hunting, military items, gun dealers, collectors and enthusiasts. Like us on Facebook at New South Gun Shows. For more information contact Bill or Elizabeth Milstead at 601-260-9822 or 601-260-5351 or visit www.newssouthgunshows.com.

MS Valley Flywheelers Spring Show & Festival. Fri.-Sat., Apr. 26-27, 2024 at Joe Brigrance Park, Houston, MS (Chickasaw Co.) Lots of antique engines and tractors, flea market and craft vendors. All kinds of festival food vendors, ice cream and old time cookers for your enjoyment. Anvil shoot on Friday and Saturday. Lots to see at our local Chickasaw Heritage Museum adjacent to the park. 5K run on Saturday morning. Fun for all ages and free admission for all visitors. For more information contact: Jimmy Sanderson 662 542-9058 or Harry Collins 662 401-9252.

Mississippi Valley Flywheelers Spring Show- MS IHC Chapter 44 State Show, Fri.-Sat., Apr. 26-27, 2024, Joe Brigrance Memorial Park, Houston, MS (Chickasaw Co.) Chapter 44 membership meeting at 11:00 a.m. Apr. 27. For more information call Harry Collins at 662-401-9252.

Animal Swap & Farmers Market- Sat., Apr. 27, 2024, at 928 Quinn Road, Byhalia, MS (Marshall Co.) \$10 vendor setup fee. Contact Lisa to reserve your spot, 901-326-9366.

Pascagoula Gun Show- Sat.-Sun., May 18-19, 2024, Jackson County Pascagoula Fairgrounds, 2902 Shortcut Road, Pascagoula, MS (Jackson Co.) Show hours: Sat. 9 a.m.- 5 p.m. & Sun. 10 a.m.-5 p.m. Exhibits include guns, military, hunting, knives, gun enthusiasts, dealers & collectors. Buy, sale, trade or appraisals. Hourly door prizes. Like us on Facebook at Big Pop Gun Shows. For more information and admission coupon call 601-498-4235 or www.bigpopgunshows.com.

No-Till Demonstrations & Workshops for Small Farmers

Tue., Apr. 16, 2024- at 719 Zion Hill Road, Mendenhall, MS (Simpson Co.) Topics to be covered include soil and forage management utilizing no-till planter, USDA programs and services, timber management. Demonstration will show the use and calibration of no-till grain drill. Registration starts at 8:30 a.m. Lunch will be provided. Please call or text Clifton Peters at 601-572-5378 to get more information and register. Workshop sponsored by Restoring Faith and USDA-NRCS.

Thu., Apr. 23, 2024- at 15254 River Road, Natchez, MS (Jefferson Co.) The demonstration will show the use and calibration of no-till grain drill. The demonstration will start at 8:00 a.m. and be completed by 11:00 a.m. There will be discussions on the advantages of using no-till planting and other climate smart agriculture practices. All individuals will get to learn about USDA programs and services. Refreshment provided. Please call or text Clifton Peters at 601-572-5378 to get more information. Demonstration sponsored by Restoring Faith and USDA-NRCS.

Tue., Apr. 25, 2024- at 40 Hillcrest Drive, Natchez, MS (Adams Co.) Topics to be covered include soil and forage management utilizing no-till planter, USDA programs and services, timber management. Demonstration will show the use and calibration of no-till grain drill. Registration starts at 8:30 a.m. Please call or text Clifton Peters at 601-572-5378 to get more information and register lunch will be provided. Workshop sponsored by Restoring Faith and USDA-NRCS.

MISSISSIPPI STATE FAIRGROUNDS COMPLEX

Jackson, Mississippi
PH: 601-961-4000
www.mdac.ms.gov

Wed., Apr. 17
MSTUG 2024
Trade Mart

Thu., Apr. 18
USDA Workshop
Trade Mart

Sat., Apr. 20
XJXN City with Southern Soul
Blues Fest
Coliseum

Sat.-Sun., Apr. 20-21
Jackson Gun Show
Trade Mart

Wed.-Thu., Apr. 24-25
Truckers Against Trafficking
Coliseum - Red Room

Fri.-Sat., Apr. 26-28
Vintage Market Days of MS
Trade Mart

Sat., Apr. 27
Belhaven Commencement
Coliseum

Thu.-Sun., Apr. 25-28
Dixie Challenge
Kirk Fordice Equine Center

Tue., Apr. 30
MDES & Governor’s Job Fair
Trade Mart

Thu., May 2
MDOC Board Meeting
Trade Mart

Sat., May 4
Entergy Lineman Rodeo
Outdoor Areas - South Parking

Sat., May 4
MMC Truck Rodeo
Outdoor Areas - Northeast Parking

Fri.-Sat., May 10-11
MS GOP Convention
Trade Mart

NESHOBA COUNTY COLISEUM

Philadelphia, MS
PH: 601-656-5775

Sat., Apr. 27
Spring Fling Market

Thu., May 9
Neshoba Central FFA Banquet

Fri., May 17
Neshoba Central High School
Graduation

Sat., May 18
Concert of Hope

MISSISSIPPI GULF COAST COLISEUM

Biloxi, Mississippi
PH: 228-594-3748
www.mscoastcoliseum.com

Fri.-Sun., Apr. 19-21
Crawfish Music Festival 2024

Thu., Apr. 25
Embroidery & Vinyl Tradeshow

Fri., Apr. 26
Deep South Spirit End
of The Season Event

Fri., May 3
Showstopper Dance Convention

Sat., May 4
Brick Fest Live

Wed.-Thu., May 8-9
Mississippi Gulf Coast
Community College Graduation

Sat., May 11
USM Gulf Coast Graduation

Thu., May 16
Long Beach High School
Graduation

Sat., May 18
D’iberville High School Graduation

Sat., May 18
West Harrison High School
Graduation

Sat., May 19
Biloxi High School Graduation

Mon., May 20
St. Martin High School Graduation

Tue., May 21
Vancleave High School Graduation

Wed., May 22
Ocean Springs High School
Graduation

Thu., May 23
East Central High School
Graduation

Fri., May 24
Blippi | The Wonderful World Tour

Wed., May 29
Gulfport High School Graduation

FORREST COUNTY MULTIPURPOSE CENTER

Hattiesburg, Mississippi
PH: 601-583-7500
www.forrestcountycenter.com

Fri.-Sun., Apr. 26-28
Cinco De Mayo Barrel Bash

5D Multi-Race

Sat., May 4
Bulls, Bands & Barrels

LINCOLN CIVIC CENTER

Brookhaven, Mississippi
PH: 601-823-9064

Fri.-Sat., Apr. 19-20
Lee Earls Team Penning

Thu.-Sun., Apr. 25-28
Dog Show

Tue., Apr. 30
Twisted Sisters Barrel Race

Mon.-Wed., Apr. 29 - May 1
Continental Ice Plant Conference

Sat., May 4
SWMSHA Barrel Race

Wed., May 8
Bubble Show

Thu., May 9
Twisted Sisters Barrel Race

LAUDERDALE COUNTY AGRI-CENTER

Meridian, Mississippi
PH: 601-482-8498

Fri.-Sat., Apr. 19-20
The Original Toughman
Contest-Mississippi

Fri.-Sat., Apr.-26-27
Red Hills Horse Show

Sat., May 4
No Limits Monster Trucks

Fri.-Sat., May 10-11
Red Hills Horse Show

Sat., May 18
Red Hills Horse Show

RANKIN COUNTY MULTI-PURPOSE PAVILION

Brandon, Mississippi
PH: 601-278-3857
JMay@rankincounty.org

Sat.-Sun., Apr. 20-21
MS Paint Horse Club

Sat.-Sun., Apr. 27-28
Mid-South Little Britches Rodeo

Sat., May 4
MS Western

Sat., May 18
NBHA

Sun., May 19
4-H Equine &
Rankin County Riding Club

Sat.-Sun., May 25-26
Mid-South Little Britches Rodeo

Protect Buildings From Swarming Termites

April Marks Mississippi Native Plant Month

By Bonnie A. Coblentz
MSU Extension Service

House and building owners must be on high alert each spring as structures face dangerous attacks by swarms of both native and introduced termite species.

Native, subterranean termite species have started swarming in late February in South Mississippi to early March in more northern areas. The non-native, invasive and very damaging Formosan subterranean termite begins swarming in some parts of Mississippi in May.

Santos Portugal, Mississippi State University Extension Service urban entomologist, said the native subterranean termites in their natural environment are a good thing as they help to break down dead trees and release nutrients back into the soil.

“But termites in structures are a bad thing, especially since we tend to make our buildings out of their favorite type of food -- dead trees,” Portugal said.

Swarming is when hundreds to thousands of termites in their reproductive, winged stage go on mating flights from established colonies.

“They will pair off, mate, detach their wings and look to establish a new colony,” Portugal said. “In Mississippi, the eastern subterranean termite and related species tend to swarm anywhere from mid-February to mid-May depending on where you are in the state.

“These termites are native, abundant and can be found in any county in Mississippi,” he said. “They swarm during daytime hours, as opposed to the invasive Formosan subterranean termite that swarms at night and emerges later in the season.”

Eastern subterranean termites are about 3/8 of an inch long including their two long, equal-sized pairs of light-colored wings. Their bodies are



Native, subterranean termite species are swarming in the state as thousands of termites in their reproductive, winged stage go on mating flights from established colonies. (Photo by MSU Extension Service/Blake Layton)

often black or dark brown.

“If you find swarmers outdoors near your house, you might consider reaching out to a qualified pest management company to have an inspection conducted on your home,” Portugal said. “If you find swarmers indoors, it is very likely that you have an infestation and should reach out to a qualified pest management company to request an inspection and bid for treatment.”

Professionals recommend that due to the high level of termite activity in Mississippi, all building owners should have a current termite contract on their structures. Seeing swarmers anywhere in the landscape is a reminder to ensure the contract is current, and the building has been treated.

Blake Layton, MSU Extension entomologist, said all buildings in the state should be preventatively treated for termites. Be sure not to disturb treatments once they have been applied or installed.

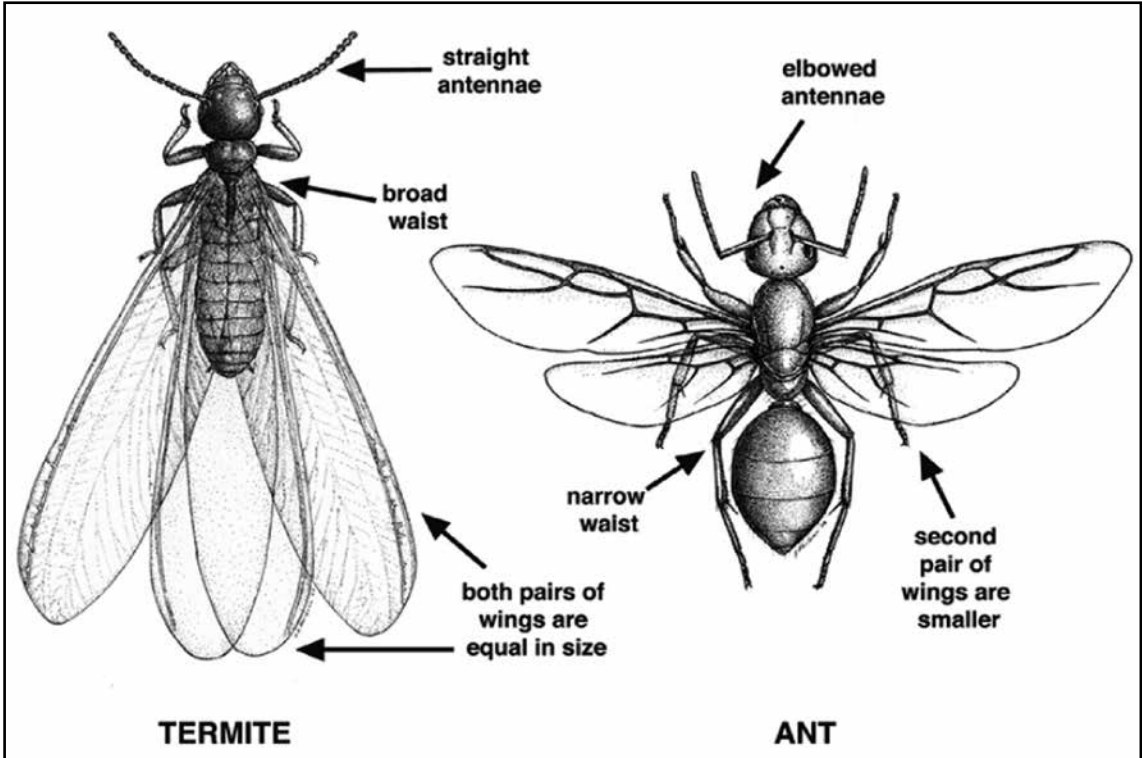
“Buildings that are not properly

protected from termites will eventually be damaged by termites,” Layton said. “Termite control is not a do-it-yourself job. If you want the job done right, it is important to contract with a licensed pest control company to apply termite treatments.”

Layton said termites occur in all home landscapes and will readily invade buildings if given a chance.

“In the pest control industry, situations that give termites a greater chance to invade buildings are referred to as conducive conditions,” he said. “Mulch piled too high against exterior foundations, direct wood to soil contact, firewood or lumber stacked against the building and moisture problems due to structural or plumbing leaks are just a few examples of conducive conditions.”

Mississippians can report termite swarmers and find more information on these pests at <https://extension.msstate.edu/content/report-swarming-flying-or-winged-termite>.



By Emma Dotson
Public Relations Specialist - MDAC

Throughout April, the Mississippi Department of Agriculture and Commerce (MDAC) will be sharing educational information through promotional channels to inform and encourage the public to utilize native plants.

“The drought took a toll on many Mississippians’ plants — both on farms and in Mississippian’s yards — this past year. This Native Plant Month, consider the benefits of utilizing native plant species in landscaping as they occur naturally and thrive in our environment,” said Commissioner of Agriculture and Commerce Andy Gipson. “These plant species also typically do not require as much fertilizer, insect and disease control, or watering as non-native plants growing in the same area, making them a resilient and hearty choice for garden beds or yards.”

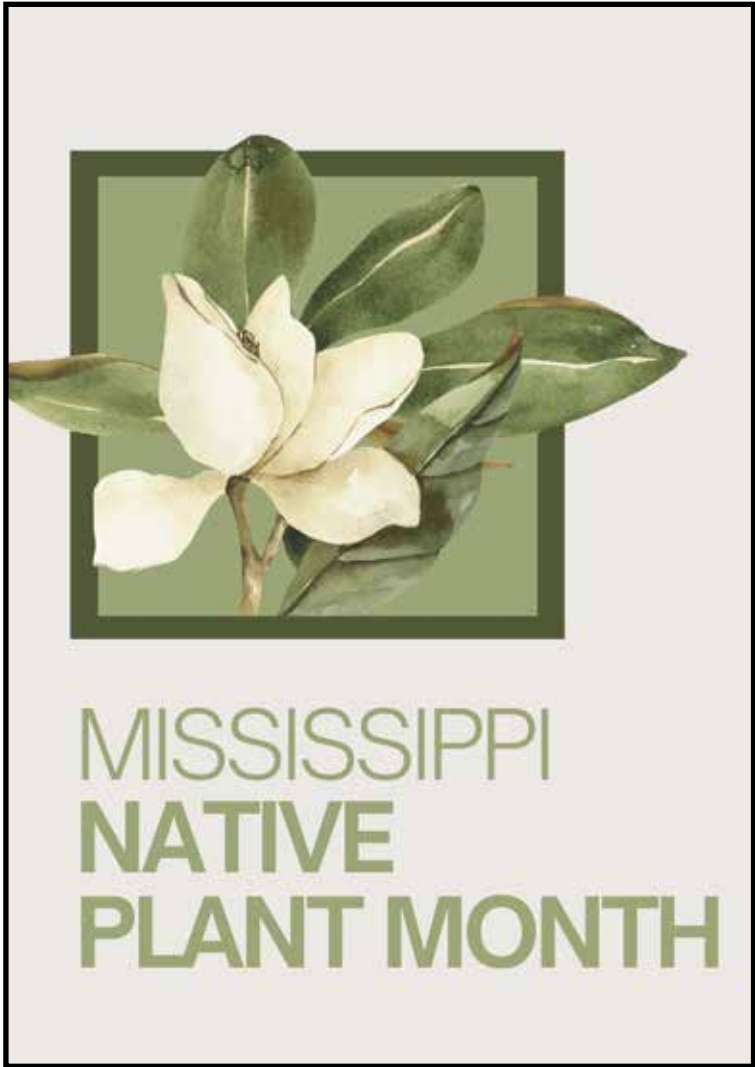
Mississippi is home to more than 2,700 native plant species which include trees, shrubs, vines, grasses and wildflowers. These native plants flourish in the state’s soils, wetlands, temperatures, precipitation and environmental conditions, making them essential for conserving and protecting our environment. Mississippi na-

tive plants are specific to our state; they occur naturally and thrive in our distinct ecosystems and environment. This makes them a low-maintenance, cost-effective option for your garden or yard.

In March 2023, Governor Tate Reeves signed Senate Bill 2137 into law, Miss. Code Ann. § 3-3-69, designating April as “Mississippi Native Plant Month” to preserve the heritage and the importance of native plants for clean air, water and soil stability in the State of Mississippi. During the month of April, the Mississippi Department of Agriculture and Commerce educates citizens about the importance and history of Mississippi’s native plants and the many benefits they provide to pollinators and to preserve Mississippi’s biological heritage in aiding in the prevention of flooding and erosion and maintaining and preserving the health of Mississippi’s economy and environment.

Many native plants can be found at local nurseries. Find nurseries near you by visiting MDAC’s Directory of Mississippi Certified Nurseries and Nursery Dealers or GenuineMS.com.

To learn more about native plants in Mississippi and their benefits for supporting the state’s ecosystems, visit MDAC’s Mississippi Native Plant Month website.



Throughout the month, MDAC will be sharing educational information through our promotional channels to inform and encourage the public to utilize native plants.