



*Timber*

# Mississippi Timber Talk



## OUR HERITAGE

Since the early 1900s Mississippi has been a leader in the timber industry. Excellent forest management has turned our forests into one of the most desirable timberlands in the world. Gulfport, Mississippi exported more Southern Yellow Pine logs than any other port on the globe!



## WOODBASKET

Mississippi has over 19 million acres of timberland of which about 89% is privately owned. Timberland covers about 63% of the state. Mississippi was the first state in the nation to establish reforestation tax credit. Mississippi is business-friendly!



## SUSTAINABILITY

We plant more than we harvest. You never come short of timber supply when you operate your business in Mississippi. We are rich, both in softwood and hardwood timber.

The average Softwood growth to harvest ratio is 2:1

The average Hardwood growth to harvest ratio is 3.53:1



## CERTIFIED TREE FARMERS

The Mississippi Tree Farm Program is affiliated with the American Tree Farm System (ATFS). ATFS is a program of the American Forest Foundation and is committed to sustaining forests, watersheds, and healthy habitats through the power of private stewardship.



## LOGGING

Mississippi has about 1,000 qualified professional logging companies.

Loggers qualified from Professional Logging Manager (PLM) program are trained to meet the Sustainable Forestry Initiative (SFI) standards, Best Management Practices (BMPs), logging and transportation safety, and to make businesses more efficient, profitable, and legal.

# Mississippi Land Cover Map

## LAND COVER CLASSIFICATION FROM SATELLITE IMAGERY

	OPEN WATER
	DEVELOPED, OPEN SPACE
	DEVELOPED, LOW INTENSITY
	DEVELOPED, MEDIUM INTENSITY
	DEVELOPED, HIGH INTENSITY
	BARREN LAND
	DECIDUOUS FOREST
	EVERGREEN FOREST
	MIXED FOREST
	SHRUB/SCRUB
	HERBACEOUS
	HAY/PASTURE
	CULTIVATED CROPS
	WOODY WETLANDS
	EMERGENT HERBACEOUS WETLANDS

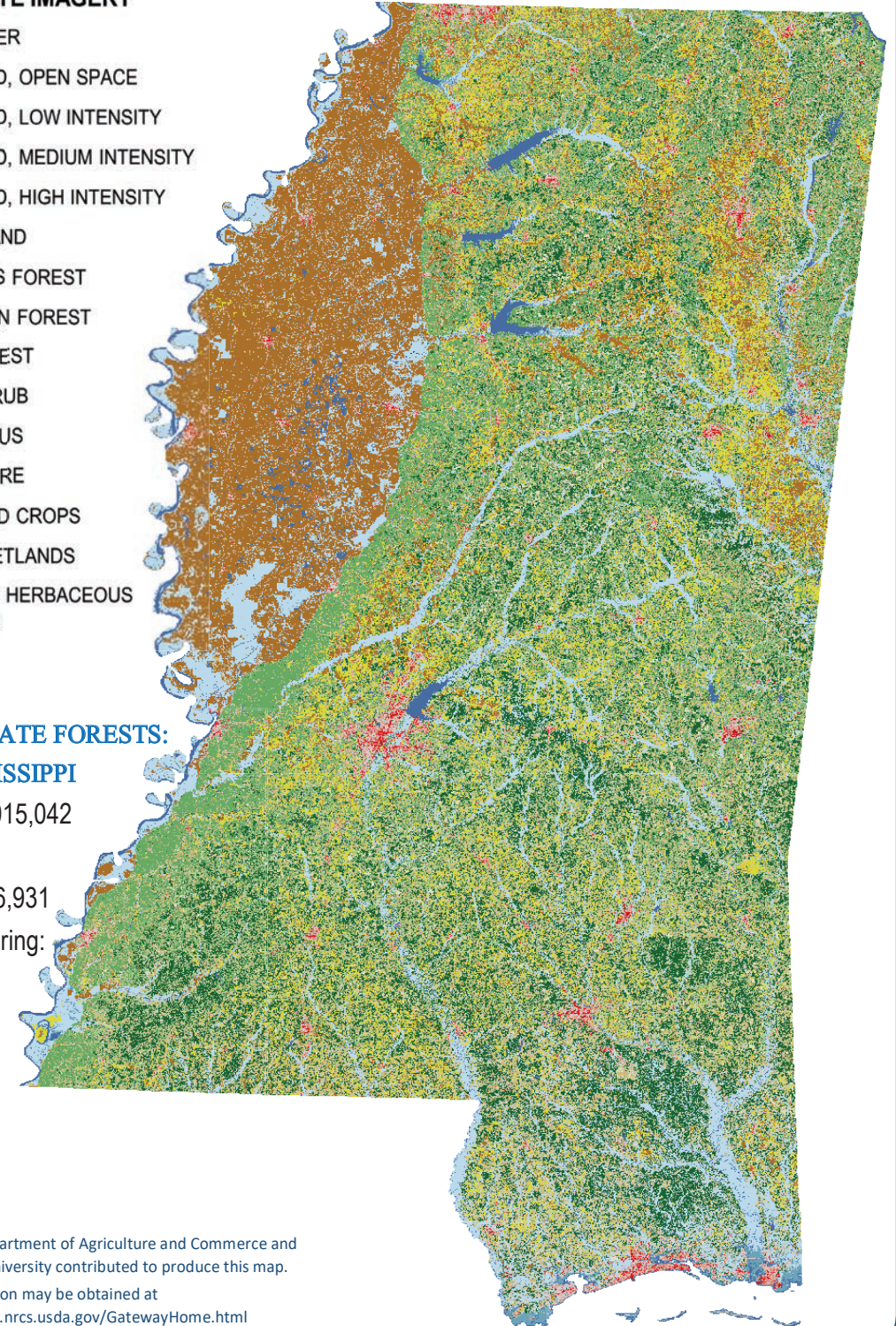
## WORKING PRIVATE FORESTS: STATE OF MISSISSIPPI

Private Acres: 17,015,042

Jobs: 53,855

Payroll: \$3,323,216,931

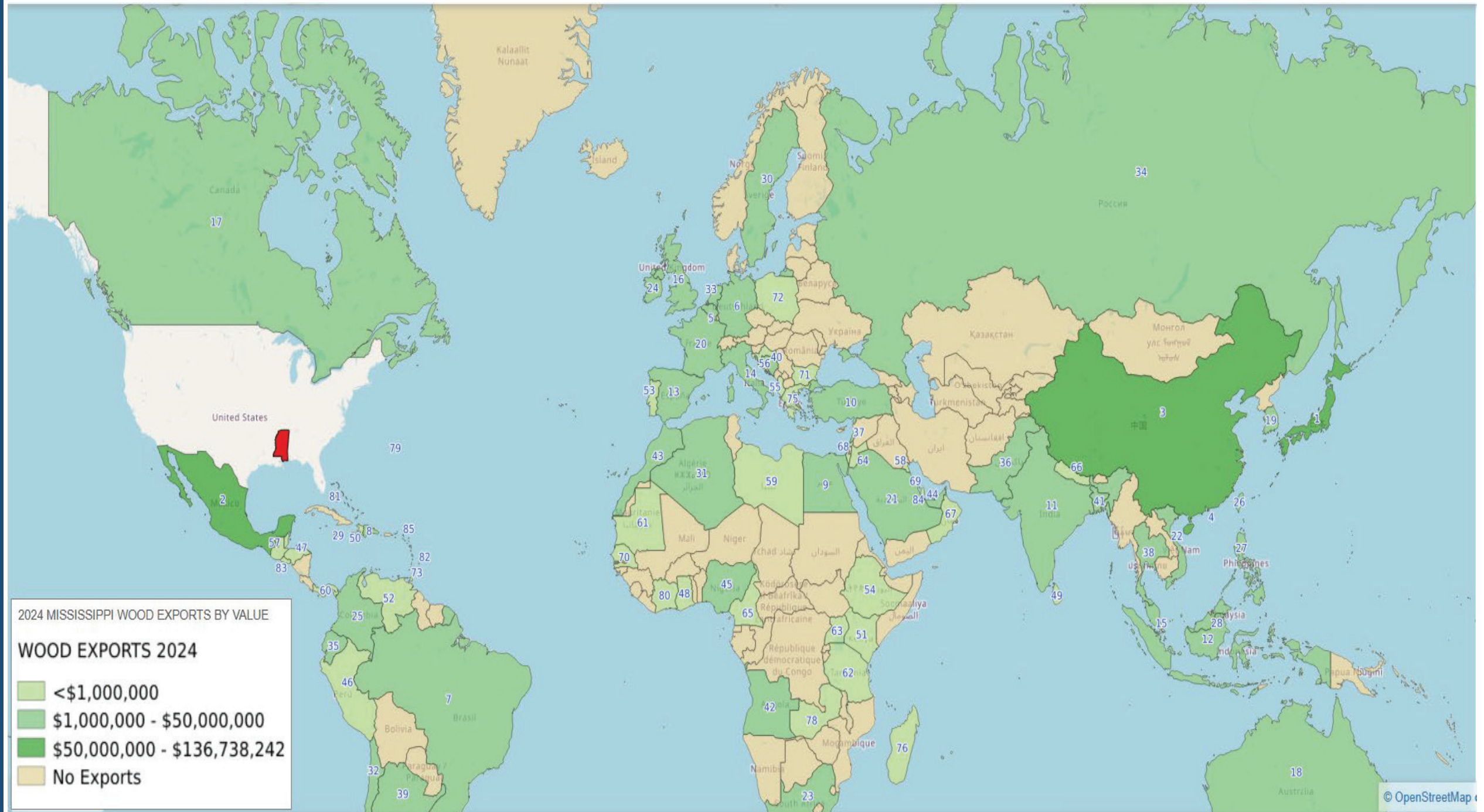
Sales & Manufacturing:  
\$9,344,619,895



The Mississippi Department of Agriculture and Commerce and Mississippi State University contributed to produce this map.  
Downloadable version may be obtained at  
<http://datagateway.nrcs.usda.gov/GatewayHome.html>



# International Trade

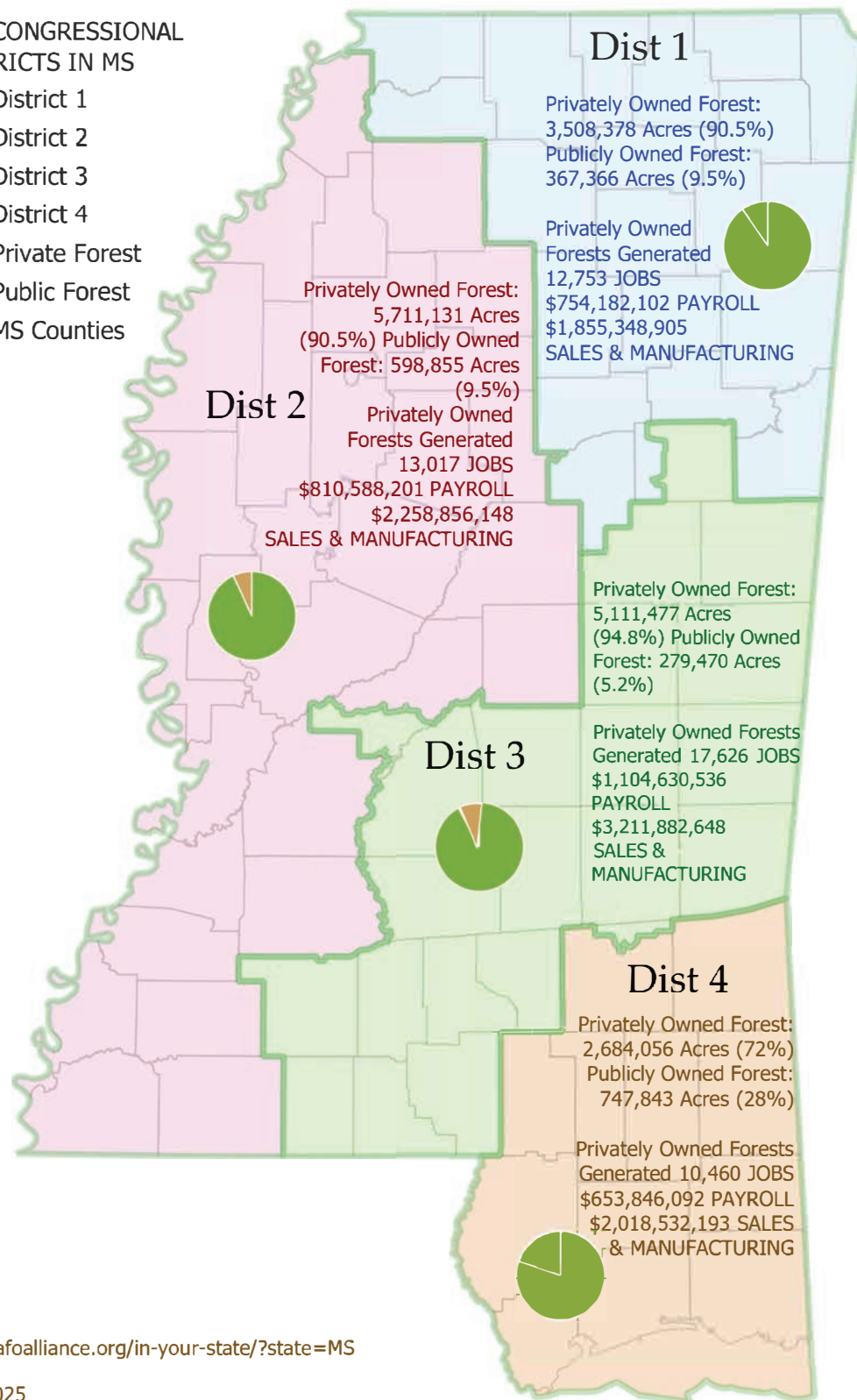




# PRIVATELY OWNED MISSISSIPPI FORESTS AND THEIR IMPACT ON ECONOMY BY U.S. CONGRESSIONAL DISTRICTS

## U.S. CONGRESSIONAL DISTRICTS IN MS

- District 1
- District 2
- District 3
- District 4
- Private Forest
- Public Forest
- MS Counties



<https://nafoalliance.org/in-your-state/?state=MS>

10/07/2025



# *Welcome to the Hospitality State!*

It is our pleasure to present the Mississippi Timber Booklet, showcasing the strength and vitality of our state's timber industry. Inside, you'll find an overview of Mississippi's timber resources, their economic impact, and insights into why our forests are among the most productive in the nation.

## **Mississippi Timber Facts:**

- Mississippi has over 1 billion green tons of timber growing across its extensive forestlands.
- We rank as the 3rd largest timber-producing state in the Southeastern United States by private forest acreage.

Whether you are looking to expand your timber business, purchase timber, or learn more about our resources, Mississippi has much to offer. We invite you to visit and allow us to show you firsthand the opportunities that await in our forests.

The Mississippi Department of Agriculture and Commerce thanks you for considering our state for your timber needs.

**We are here to serve you!**



<https://timber.mdac.ms.gov/>



**Mississippi Timber Division**  
**Ginger Williamson**  
**601-359-1150**

**Vol II.**