



**STATE OF MISSISSIPPI
DEPARTMENT OF AGRICULTURE AND COMMERCE**

ANDY GIPSON
COMMISSIONER

PRESS RELEASE

FOR IMMEDIATE RELEASE: December 20, 2024

Contact: Paige Manning, Director of Marketing and Public Relations
(601) 359-1163 / cell: (662) 312-5897
Paige@mdac.ms.gov

Hannah East, Marketing Specialist
(601) 359-1179
HannahE@mdac.ms.gov

MALTB Recovers Stolen Tractor, Makes Arrest in Sunflower County
Investigation Leads to Recovery of Stolen Agricultural Equipment from Multiple States

JACKSON, Miss. – This week, the Mississippi Agriculture and Livestock Theft Bureau (MALTB) recovered agricultural equipment and arrested Doug Showah of Sunflower County following an investigation into the theft of a stolen tractor, valued at \$64,000, from a farm in Washington County.

The MALTB first received information about a possible stolen John Deere 3039R tractor on October 23, 2024. The tractor was later determined to be stolen from Washington County. On or about November 22, the tractor was located in Sunflower County and tied back to Christopher Douglas Showah of Indianola, Mississippi.

On Tuesday, December 17, MALTB investigators searched M & D Aviation, a business owned by Doug Showah. During this search, a Polaris 1000 side-by-side that was stolen out of Ashley County, Arkansas, was also recovered. The side-by-side was valued at \$18,300. Doug Showah was arrested and charged with two counts of receiving stolen property. This is an open and ongoing investigation.

MALTB Director Dean Barnard would like to commend all his MALTB investigators, along with the Sunflower County and Washington County Sheriff's Office, for their continued effort and help in recovering stolen agricultural assets.

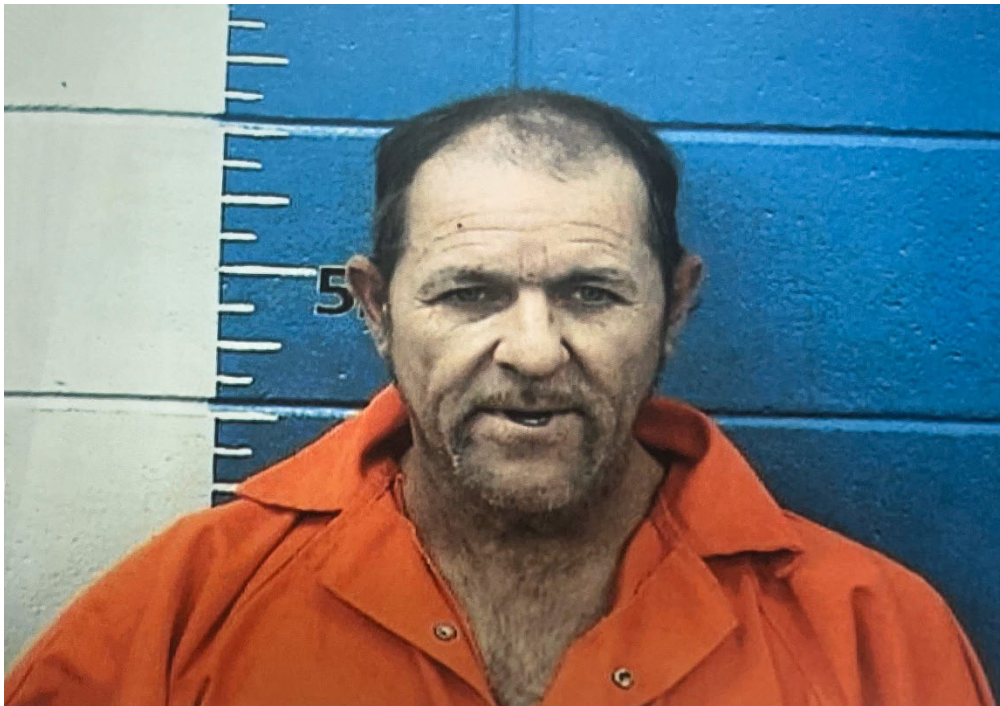
The Mississippi Agriculture and Livestock Theft Bureau, the law enforcement division of the Mississippi Department of Agriculture and Commerce, enforces state laws pertaining to the theft of cattle, horses, swine, poultry, fish, farm equipment, chemicals, timber and all other farm or agriculture-related crimes. Visit <http://msagtheft.org/> to learn more about the MALTB. To report or provide information regarding an agricultural crime, call (800) 678-2660.

###

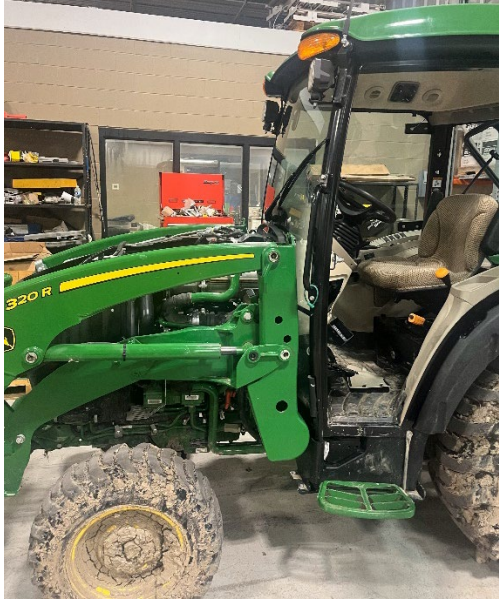


**Mississippi Agricultural and Livestock Theft Bureau
Dean Barnard, Director
P.O. Box 1609
Jackson, MS 39215
Telephone: (601) 359- 1121
Tip Line: 1 (800) 678-2660**

Photos attached.



Christopher Douglas Showah of Indianola, Mississippi, was arrested and charged with two counts of receiving stolen property.



The Mississippi Agriculture and Livestock Theft Bureau recovered a stolen John Deere 3039R tractor (left) stolen out of Washington County, Mississippi, and a Polaris 1000 side-by-side (right) stolen out of Ashley County, Arkansas, this week. The agricultural equipment, valued at a combined \$82,300, was located and recovered in Sunflower County, Mississippi.