

# MISSISSIPPI STATE FAIR



LET THE FUN BEGIN



OCTOBER 3 -14

2024

MISSISSIPPI STATE  
**FAIR**



# Welcome

## to the 2024 Mississippi State Fair



Dear Fairgoer,

The Mississippi State Fairgrounds and the Mississippi Department of Agriculture and Commerce extend a warm welcome to you and your loved ones for the 165th Mississippi State Fair!

We take immense pride in presenting the Mississippi State Fair, scheduled from October 3 to 14. This year, we will remain open through Columbus Day on October 14 to give everyone an extra day to come enjoy the fun and excitement. This 12-day extravaganza promises an abundance of entertainment, livestock shows, unique foods, exhilarating rides, and games suitable for everyone.

During the 2024 Mississippi State Fair, spectators and participants can find excitement in numerous livestock shows, great musical entertainment in the Coliseum, the Taste of Dixie National Rodeo, the Zerbini Family Circus, the Tri-State Rodeo, and so much more.

State Fairs have a rich history rooted in promoting agriculture, and the Mississippi State Fair proudly upholds this tradition by hosting daily livestock shows on its Fairgrounds. These shows not only provide a platform for 4-H and FFA students to showcase their animals but also foster a sense of community and offer opportunities to earn scholarships. Take a stroll through the livestock barns to witness the immense dedication these young individuals pour into preparing their animals for the show. And don't miss the chance to explore the Genuine MS® Store at the Prime Well Health State Fair Marketplace, where you can discover products grown, raised, crafted, and made by Mississippi producers. Lastly, make sure to swing by the Midway and meet the passionate employees of the Mississippi Department of Agriculture and Commerce, who continue the time-honored tradition of treating fairgoers to complimentary hot, homemade biscuits every day.



Deviney is proud to present the Mississippi Frontier Village once again at the Fair. Step into this outdoor attraction and immerse yourself in the world of the Wild West with its western-style vendors, exhibits, and entertainment, including the thrilling Taste of Dixie National Rodeo. Don't miss the exciting additions to Frontier Village, such as the Agri-puppets and Tumbleweed Crossing. Make sure to bring your family along and discover all that we have in store for you.

Make the most of your visit by following the schedule of events and activities in this guide. For additional information, ticketing, a map of the attractions, and livestock show information, please visit [www.msstatefair.com](http://www.msstatefair.com) to learn more. We are thrilled to announce that online ticketing is now available, allowing you to secure your tickets in advance. Also, we would like for you to share your pictures and memories on social media outlets and tag the Mississippi State Fair in your posts on [Facebook.com/mississippistatefair](https://www.facebook.com/mississippistatefair), Instagram @statefairms, and X @msstatefair.

Thank you for letting the Mississippi State Fair be a part of your family tradition this year. We all owe a debt of gratitude to those who dedicate their time and talents in bringing the Fair to life, as well as the sponsors who support this fun-filled, family event. I look forward to seeing you at the 165th Mississippi State Fair!

Sincerely,  
Andy Gipson

A handwritten signature in blue ink that reads "Andy Gipson". The signature is fluid and cursive, written in a professional but personal style.

Mississippi State Fair  
[@statefairms](https://www.facebook.com/statefairms)  
[@msstatefair](https://www.instagram.com/msstatefair)  
[www.msstatefair.com](http://www.msstatefair.com)

# General Information

DATE	GATES OPEN	PAID ADMISSION STARTS	RIDES START	GATES CLOSE
Thursday, October 3	11am	1pm	2pm	10pm
<b>No Ride Special. Free admission for First Responders. Must present ID.</b>				
Friday, October 4	11am	1pm	12 Noon	12am
<b>Ride Wristband Day \$30 • 8pm-Close</b>				
Saturday, October 5	10am	10am	11am	11pm
<b>No Ride Special</b>				
Sunday, October 6	10am	10am	12 Noon	10pm
<b>Ride Wristband Day \$35 • 12Noon-10pm</b>				
Monday, October 7	11am	1pm	12 Noon	10pm
<b>Ride Wristband Day \$35 • 2pm-10pm</b>				
Tuesday, October 8	11am	1pm	2pm	10pm
<b>Ride Wristband Day \$35 • 2pm-10pm</b>				
Wednesday, October 9	11am	1pm	2pm	10pm
<b>Ride Wristband Day \$35 • 2pm-10pm</b>				
Thursday, October 10	11am	1pm	2pm	10pm
<b>No Ride Special</b>				
Friday, October 11	11am	1pm	2pm	12am
<b>Ride Wristband Day \$30 • 8pm-Close</b>				
Saturday, October 12	10am	10am	11am	11pm
<b>No Ride Special</b>				
Sunday, October 13	10am	10am	12 Noon	10pm
<b>No Ride Special</b>				
Monday, October 14	11am	11am	12 Noon	10pm
<b>Ride Wristband Day \$35 • 12Noon-10pm</b>				

## Where can I get Pre-Sale General Admission Tickets?

- Pre-Sale Tickets are now available online at [www.msstatefair.com](http://www.msstatefair.com)
- Pre-Sale Tickets are \$8 if purchased online from now until October 2nd

## How much is Regular Gate Admission?

- \$10 gate admission
- FREE admission for children 5 and under
- Free parking everyday!
- Free admission M-F 11am-1pm

*Does not include Columbus Day, Monday, October 14*

# STATE FAIR MARKETPLACE

Sponsored by

# PRIMEWELL HEALTH

In the Trade Mart

## ANTIQUE Car Show

TRADE HALL A

Vote for the Best Antique Car!

\$1 donation = 1 Vote

100% of proceeds donated

to Blair E. Batson Children's

Hospital

## SHOPS of the State Fair!

TRADE HALL B

- Clothing, Jewelry & Gifts
- Sports & Team Gear
- Tupperware & Scentsy
- Massages & Hair Styling
- Product Demos & Hats
- Sweet Candy & Savory Dips
- Genuine MS® Store featuring all MS made Products
- Handmade Crafts
- Leather Goods
- Guns Safes
- Outdoor Sheds & Storage Buildings

## Informational EXHIBITS TRADE HALL C

- Religious Organizations
- Governmental Agencies
- Safety Information
- Community Services
- The Two Mississippi Museums
- The Agricultural & Forestry Museum
- The Utica Institute Museum at Hinds Community College

## THE TRADE MART Stage

TRADE HALL C

- OCTOBER 5  
Fiddle Contest
- OCTOBER 12  
4-H Day

Omllette Cook-off, 4-H Chopped, Fashion Show, Competitions, Robotics Demonstrations and much more!

- OCTOBER 13  
Chess tournament  
2pm - 4pm

## FARMtastic™

### Exhibit for Children

TRADE HALL C

- See hatching chicks!
- Take a selfie in the egg chair!
- Explore Mississippi Agriculture Colleges & Universities
- Find the queen in a beehive
- Milk a cow
- Inspect the insects
- Antique tractors
- Farm & Lawn Equipment
- Learn about 4-H & FFA
- Walk through the soil tunnel
- Let your children cool off in the Farm Bureau Learning Area
- Grab some S.W.A.G!  
(Stuff we all get!)



# SPECIAL EVENTS

**The Mississippi State Fair Pageant elevates outstanding individuals!**  
**From birth to 19 years old, it's your time to shine!** Face a panel of judges and walk the big stage in front of pageant professionals.

**Thursday, October 3 • 6pm • Coliseum**

Sponsored by

Hometown  
**Magazines**

 **TempStaff**



**Mississippi is home to talent, both young and old!**

Do you have what it takes to win the Mississippi State Fair Talent Show and a cash prize? The State Fair is committed to showcasing talent from all across the state! All ages and talents are welcome, and a prize of up to \$500 is on the line.

**Friday, October 4 • 4pm • Coliseum**



## TRI-STATE RODEO

SATURDAY, OCTOBER 5 • 8PM • Equine Center  
SUNDAY, OCTOBER 6 • 2PM • Equine Center

Come enjoy the family-friendly fun of the 5th Annual Mississippi State Fair Rodeo. \$10 admission can be purchased on Ticketmaster or at the door.

**BUSCH LIGHT**

PRESENTS THE

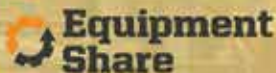
**TASTE OF**

**DIXIE  
NATIONAL**

**LIVESTOCK SHOW  
AND RODEO**

**WEEKDAY  
SHOWS AT  
7:00PM!**

**WEEKEND  
SHOWS AT  
2:00PM &  
7:00PM!**



First on Any Menu



# 4-H AND FFA BARNYARD



**LOCATED IN  
BARN 6!**

**M-F:  
10:00AM TO 7:00PM**  
**S-S:  
9:00AM TO 7:00PM**



# ZERBINI FAMILY CIRCUS



**M-F:  
2:00PM & 6:00PM**  
**S-S:  
11:00AM & 6:00PM**





# PETTING ZOO

**OPEN DAILY FROM  
11:00AM TO 9:00PM!**



# PIG RACES

**DAILY SHOWS AT 1:00PM,  
4:00PM, AND 8:00PM!**





# TUMBLEWEED CROSSING



**DAILY SHOWS AT 12:00PM,  
3:00PM, AND 5:00PM!**

# Agri-Puppets



**DAILY SHOWS AT 12:30PM,  
3:30PM, AND 5:30PM!**





# 2024 MISSISSIPPI STATE FAIR

Prayer & Pledge held before each Show

## Thursday, October 3

8:00am

Scales open for weighing market goats and commercial meat goat does

1:00pm-6:00pm

Stall and pen assignments for early arriving lambs, steers, and breeding cattle (All stall and pen assignments to be made by show management)

1:00pm

Scales open for weighing market lambs, wether dams, market hair sheep, breeding hair sheep, market steers, and commercial beef heifers

## Friday, October 4

8:00am - 12:00 Noon

Stall and pen assignments for lambs, steers, and beef breeding cattle

8:00am

Scales open for weighing all lambs, market steers and commercial beef heifers

8:00am

Goat Showmanship

Market Goats and Commercial Meat Goat Does

4-H/FFA Meat Goat Doe Show

Start 15 minutes after Goat Showmanship

Junior Market Goat Show ..... Barn 7

Heartland Judging Arena

released after showing

Registered Breeding Boer Doe

Showmanship and Show ..... Barn 7

Heartland Judging Arena

Showmanship and Show start

15 minutes after Market Goat Show

## Saturday, October 5

8:00am

Junior Market Steer Show ..... Barn 14

Havard Pest Control Judging Arena

Two rings – Progress Steers on one side and Prospect Steers on the other side; steers released after showing

Junior Commercial Beef

Heifer Show ..... Barn 14

Havard Pest Control Judging Arena

Two rings – Starts 15 minutes after Market Steer Show; heifers released after showing

1:00pm

Junior Lamb Shows ..... Barn 8

Heartland Judging Arena

Hair sheep show (showmanship; breeding hair sheep; market hair sheep) followed by lamb show (showmanship; wether dams; market lambs); all lambs released after showing

2:00pm

Open Hereford Show ..... Barn 14

Judging Arena - Ring 1

Open Angus Show ..... Barn 14

Judging Arena - Ring 2

5:00pm

Open Simmental Show ..... Barn 14

Judging Arena

8:00pm

Tri-State Rodeo ..... Equine Center

## Sunday, October 6

8:30am

4-H/FFA Replacement Beef Heifer

Development Contest Awards

..... Judging Arena

9:00am

Beef Showmanship ..... Barn 14

Havard Pest Control Judging Arena

Two rings

9:00am

Junior Cattlemen's

Association Meeting ..... Sales Arena

9:00am

Devotional Service ..... Judging Arena

2:00pm

Tri-State Rodeo ..... Equine Center

2:30pm

Check-in for Livestock

Judging Contest ..... Barn 14

3:00pm

MS State Fair Livestock

Judging Contest ..... Barn 14

or 30 minutes after Showmanship

## Monday, October 7

8:00am

Junior Beef Breeding Show ..... Barn 14

Havard Pest Control Judging Arena

Two rings – cattle released after showing

## Tuesday, October 8

9:00am

Stock Dog Trial ..... Equine Center

6:00pm

Stock Dog Cattle Trial ..... Equine Center

## Wednesday, October 9

9:00am

Stock Dog Trial ..... Equine Center

1:00pm - 4:00pm

Stall early arriving Open Dairy Cattle

Show animals



# Livestock Schedule

## Thursday, October 10

8:00am

Arrival of Junior and Open Market Swine; scales open for weighing Junior and Open swine

## Friday, October 11

8:00am

4-H/FFA Dairy Goat Show ..... Barn 8  
Heartland Judging Arena

*Showmanship, Commercial Dairy Goats, Senior & Junior Does*

8:00am

4-H Rabbit Show Check-in ..... Barn 12

8:00am

Open Market Swine Show . Swine Barn 7

8:15am

Junior Market Hog Show .. Swine Barn 7  
Heartland Judging Arena

*Swine showmanship followed by Market Hog classes – all hogs released after showing*

Open Junior Prospect Hog Show

..... Swine Barn 7

*following Market Hog Show*

9:00am

4-H Rabbit Show .... Barn 12 Sales Arena

9:00am

Open Dairy Cattle Show . Judging Arena

1:00pm

Pony Pull ..... Equine Center

1:00pm

Two-Year-Old Jersey Futurity

..... Judging Arena

1:30pm

Two-Year-Old Holstein Futurity

..... Judging Arena

7:00pm

Special Dairy Classes .... Judging Arena

The Pretty Cow Contest

The Commissioner's Production Cup

8:00pm

Arrival of Open Show

Dairy Goats

## Saturday, October 12

8:00am

MGA Open Dairy Goat Show ..... Barn 8

8:00am

Open Poultry Show Check-in ..... Barn 12

8:30am

Junior Dairy Cattle Show ..... Barn 14

Havard Pest Control Judging Arena

*Showmanship followed by the Commercial*

*Dairy Heifer and Cow Shows and Junior*

*Dairy Purebred Show*

11:00am

Horse & Mule Pull ..... Equine Center

1:00pm

Junior Poultry Show Check-in .... Barn 12

2:00pm

Junior Poultry Show

..... Barn 12 - Sales Arena

4:00pm

Release all dairy cattle

## Sunday, October 13

8:00am

Devotional Service ..... Judging Arena

9:00am

MGA Open Dairy Goat Show ..... Barn 14

*released after the show*

9:00am

Open Poultry Check- In ..... Barn 12

10:00am

Open Poultry Show ..... Barn 12



# Opening Day

*Friends,*

## Welcome to the 165th Mississippi State Fair!

We've spent many hours this year preparing for a unique fair experience. This year, we're focused on making the fair more convenient for our guests, starting with the introduction of our new online ticketing system. Guests can now enjoy the benefit of purchasing their fair tickets online.

We are excited to welcome back the popular "Taste of Dixie National Rodeo" for its second year. It is located in our Frontier Village, which boasts many new attractions. The Village will feature Agri-Puppets, a fun and interactive educational experience for families, and Tumbleweed Crossing, a hilarious skit that includes gun-slinging cowboys and Western fun.

Come to Frontier Village and enjoy the world-famous Mississippi Biscuit Booth, our petting zoo, and much more.

Be sure to stop by the new and improved Mississippi State Fair Marketplace in the Trade Mart to shop, cool off, and learn more about agriculture. Stroll the Midway, enjoy the rides, grab some great fair food, and check out the incredible lineup of national musical acts inside the Coliseum.

## We can't wait to see you and your family at the Mississippi State Fair!

Michael Lasseter, Fairgrounds Director



## RIBBON CUTTING

11am • Gate 1  
Amite & Jefferson Street



# Mississippi Heroes Day

We want to thank all police officers, first responders, firefighters, healthcare workers, medical professionals, and active military by offering free admission into the Fair. Identification will be required at the gate.

**THANK YOU FOR YOUR SERVICE.**



# Thursday, October 3



11:00am.....	Gates Open - Free admission until 1:00pm
11:00am-8:00pm.....	Mississippi State Fair Marketplace & Genuine MS® Store
11:00am-9:00pm.....	Farm Bureau Petting Zoo
12:00pm, 3:00pm, 5:00pm.....	Tumbleweed Crossing
12:30pm, 3:30pm, 5:30pm.....	Agri-Puppets
1:00pm, 4:00pm, 8:00pm.....	Pig Races
2:00pm, 6:00pm.....	Zerbini Family Circus
2:00pm.....	Rides Open
4:00pm-9:00pm.....	Biscuit Booth
6:00pm.....	Miss Mississippi State Fair Pageant
6:00pm-10:00pm.....	Live Music in the Busch Light Pavillion
7:00pm.....	Taste of Dixie National Rodeo
10:00pm.....	Gates Close



# MISSISSIPPI STATE



## SECURITY POLICY

Beginning at 9pm, any guest under the age of eighteen (18) seeking admission to the fairgrounds must be accompanied by an adult (21 or older).

Any guest may be asked to show official proof of age to be admitted after these times. Exceptions and challenges to this policy will be satisfied at the discretion of fair management.

When entering the Midway, all guests will proceed through one of several security points utilizing a metal detector, and/or be subject to magnetic wand.

No outside food or beverage allowed.



Gate 16

JEFFERSON STREET

Gate 1

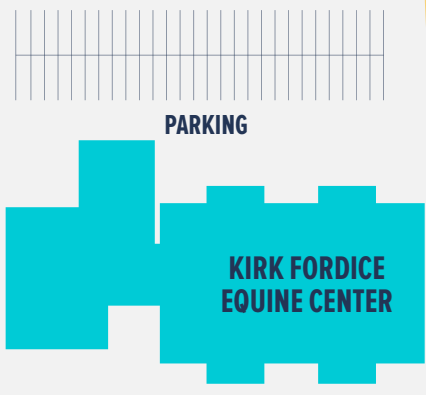
Gate 2



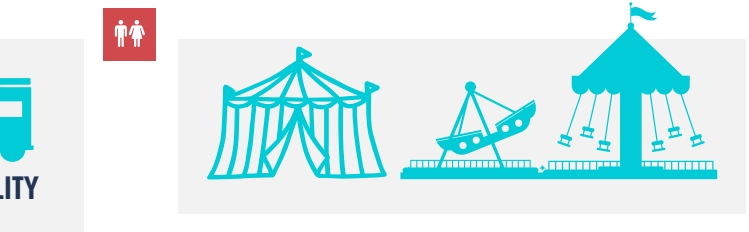
HIGH STREET



Gate 10

TO I-55 >>



MISSISSIPPI TRADE MART  
PRIMEWELL HEALTH  
State Fair Marketplace



-  **Comfort Station**
-  **ATM**
-  **EMS Station**
-  **State Law Enforcement**
-  **LOST & FOUND**
- Lost & Found Collection**



Gate 4

Gate 5

# Friday, October 4



*Shayne Weems  
& The Slow Hand Band*

**A CONWAY TRIBUTE SHOW**

**7PM-11PM**  
**BUSCH LIGHT PAVILLION**



## *Ride Special* Wristband Day \$30 • 8pm-Close

11:00am.....	Gates Open - Free admission until 1:00pm
11:00am-8:00pm.....	Mississippi State Fair Marketplace & Genuine MS® Store
11:00am-9:00pm.....	Farm Bureau Petting Zoo
12:00pm.....	Rides Open
12:00pm, 3:00pm, 5:00pm.....	Tumbleweed Crossing
12:30pm, 3:30pm, 5:30pm.....	Agri-Puppets
1:00pm, 4:00pm, 8:00pm.....	Pig Races
2:00pm, 6:00pm.....	Zerbini Family Circus
4:00pm.....	Miss Mississippi State Fair Talent Show
4:00pm-9:00pm.....	Biscuit Booth
7:00pm.....	Taste of Dixie National Rodeo
7:00pm-11:00pm.....	Live Music in the Busch Light Pavillion
11:00pm.....	Gates Close





# Saturday, October 5



## THE OAK RIDGE BOYS

2PM • COLISEUM



MAINSTAGE

## Tri-State RODEO

8PM  
EQUINE  
CENTER

\$10  
at the door



## No Ride Special Today

10:00am .....	Gates Open
10:00am-9:00pm .....	Biscuit Booth
10:00am .....	Fiddle Contest • Trade Mart
11:00am-8:00pm .....	Mississippi State Fair Marketplace & Genuine MS® Store
11:00am-9:00pm .....	Farm Bureau Petting Zoo
11:00am, 6:00pm .....	Zerbini Family Circus
11:00am .....	Rides Open
12:00pm, 3:00pm, 5:00pm .....	Tumbleweed Crossing
12:30pm, 3:30pm, 5:30pm .....	Agri-Puppets
1:00pm, 4:00pm, 8:00pm .....	Pig Races
2:00pm .....	Oak Ridge Boys • Mississippi Coliseum (ticketed event)
2:00pm and 7:00pm .....	Taste of Dixie National Rodeo
2:00pm-11:00pm .....	Live Music in the Busch Light Pavillion
8:00pm .....	Tri State Rodeo • Kirk Fordice Equine Center (\$10 admission)
11:00pm .....	Gates Close

# Sunday, October 6



**Matthew West**  
**2PM • COLISEUM**



## *No Ride Special Today*

- 10:00am ..... Gates Open
- 10:00am-9:00pm ..... Biscuit Booth
- 11:00am-8:00pm ..... Mississippi State Fair Marketplace & Genuine MS® Store
- 11:00am-9:00pm ..... Farm Bureau Petting Zoo
- 11:00am, 6:00pm ..... Zerbini Family Circus
- 12:00pm ..... Rides Open
- 12:00pm, 3:00pm, 5:00pm ..... Tumbleweed Crossing
- 12:30pm, 3:30pm, 5:30pm ..... Agri-Puppets
- 1:00pm, 4:00pm, 8:00pm ..... Pig Races
- 1:00pm-10:00pm ..... Live Music in the Busch Light Pavillion
- 2:00pm ..... Matthew West • Mississippi Coliseum (ticketed event)
- 2:00pm ..... Tri State Rodeo • Kirk Fordice Equine Center (\$10 admission)
- 2:00pm and 7:00pm ..... Taste of Dixie National Rodeo
- 10:00pm ..... Gates Close

# Monday, October 7



**The  
Smoke**

6pm-  
10pm  
**Busch  
Light  
Pavillion**



## Ride Special Wristband Day \$35 • 2pm-10pm

11:00am.....	Gates Open - Free admission until 1:00pm
11:00am-8:00pm.....	Mississippi State Fair Marketplace & Genuine MS® Store
11:00am-9:00pm.....	Farm Bureau Petting Zoo
12:00pm.....	Rides Open
12:00pm, 3:00pm, 5:00pm.....	Tumbleweed Crossing
12:30pm, 3:30pm, 5:30pm.....	Agri-Puppets
1:00pm, 4:00pm, 8:00pm.....	Pig Races
2:00pm, 6:00pm.....	Zerbini Family Circus
4:00pm-9:00pm.....	Biscuit Booth
6:00pm-10:00pm.....	Live Music in the Busch Light Pavillion
7:00pm.....	Taste of Dixie National Rodeo
10:00pm.....	Gates Close



# Tuesday, October 8



SILVER  
AND LACE

6pm-10pm • Busch Light Pavillion



## Ride Special Wristband Day \$35 • 2pm-10pm

11:00am.....	Gates Open - Free admission until 1:00pm
11:00am-8:00pm.....	Mississippi State Fair Marketplace & Genuine MS® Store
11:00am-9:00pm.....	Farm Bureau Petting Zoo
12:00pm, 3:00pm, 5:00pm.....	Tumbleweed Crossing
12:30pm, 3:30pm, 5:30pm.....	Agri-Puppets
1:00pm, 4:00pm, 8:00pm.....	Pig Races
2:00pm, 6:00pm.....	Zerbini Family Circus
2:00pm.....	Rides Open
4:00pm-9:00pm.....	Biscuit Booth
6:00pm-10:00pm.....	Live Music in the Busch Light Pavillion
7:00pm.....	Taste of Dixie National Rodeo
10:00pm.....	Gates Close



# Wednesday, October 9



Shared Health  
Mississippi

## SENIOR AMERICAN DAY



Featuring  
**Ronnie McDowell**  
Doors Open at 8am



**IKA**  
6pm-10pm  
Busch Light Pavillion



### *Ride Special* Wristband Day \$35 • 2pm-10pm

8:00am-11:00am	Shared Health Mississippi Senior American Day
9:00am-1:00pm	Biscuit Booth
11:00am	Gates Open - Free admission until 1:00pm
11:00am-8:00pm	Mississippi State Fair Marketplace & Genuine MS® Store
11:00am-9:00pm	Farm Bureau Petting Zoo
12:00pm, 3:00pm, 5:00pm	Tumbleweed Crossing
12:30pm, 3:30pm, 5:30pm	Agri-Puppets
1:00pm, 4:00pm, 8:00pm	Pig Races
2:00pm, 6:00pm	Zerbini Family Circus
2:00pm	Rides Open
4:00pm-9:00pm	Biscuit Booth
6:00pm-10:00pm	Live Music in the Busch Light Pavillion
7:00pm	Taste of Dixie National Rodeo
10:00pm	Gates Close



# Thursday, October 10



*Dirt Road*  
  
*Cadillac*

**6pm-10pm**  
**Busch Light Pavillion**



## *Ride Special* **Wristband Day \$35 • 2pm-10pm**

- 11:00am..... Gates Open - Free admission until 1:00pm
- 11:00am-8:00pm..... Mississippi State Fair Marketplace & Genuine MS® Store
- 11:00am-9:00pm..... Farm Bureau Petting Zoo
- 12:00pm, 3:00pm, 5:00pm ..... Tumbleweed Crossing
- 12:30pm, 3:30pm, 5:30pm..... Agri-Puppets
- 1:00pm, 4:00pm, 8:00pm..... Pig Races
- 2:00pm, 6:00pm ..... Zerbin Family Circus
- 2:00pm..... Rides Open
- 4:00pm-9:00pm..... Biscuit Booth
- 6:00pm-10:00pm..... Live Music in the Busch Light Pavillion
- 7:00pm..... Taste of Dixie National Rodeo
- 10:00pm..... Gates Close



# Friday, October 11

## Dru Hill



MAINSTAGE IN THE COLISEUM • 8PM



## TRAVELIN' JANE

7pm-11pm  
Busch Light Pavillion



## Ride Special Wristband Day \$30 • 8pm-Close

11:00am. ....	Gates Open - Free admission until 1:00pm
11:00am-8:00pm. ....	Mississippi State Fair Marketplace & Genuine MS® Store
11:00am-9:00pm. ....	Farm Bureau Petting Zoo
12:00pm. ....	Rides Open
12:00pm, 3:00pm, 5:00pm. ....	Tumbleweed Crossing
12:30pm, 3:30pm, 5:30pm. ....	Agri-Puppets
1:00pm-5:00pm. ....	Pony Pull • Equine Center
1:00pm, 4:00pm, 8:00pm. ....	Pig Races
2:00pm, 6:00pm. ....	Zerbini Family Circus
4:00pm-9:00pm. ....	Biscuit Booth
7:00pm. ....	Taste of Dixie National Rodeo
7:00pm-11:00pm. ....	Live Music in the Busch Light Pavillion
11:00pm. ....	Gates Close



# Saturday, October 12



**XPERIENCE JXN**  
PRESENTS

SAT OCT.  
**12TH**  
2024



**BREEZE MR. DOZMUCH**

**LJ ECHOLS**

**JAKE CARTER**

**BIG YAYO**

**F.P.J.**

**KANDY JANAI**

**FRANK JOHNSON**

**"WE OUTSIDE"**  
but *"INSIDE"* Party



**MAINSTAGE STAGE  
IN THE COLISEUM**

**PARTY STARTS AT 7PM | DOORS OPEN AT 6PM**

TICKETS AVAILABLE AT MS COLISEUM BOX OFFICE  
TICKETMASTER.COM AND BY PHONE XPERIENCE JXN ENT 678-322-8098



## No Ride Special Today

- 10:00am ..... Gates Open
- 10:00am-9:00pm ..... Biscuit Booth
- 11:00am-8:00pm ..... Mississippi State Fair Marketplace & Genuine MS® Store
- 11:00am-9:00pm ..... Farm Bureau Petting Zoo
- 11:00am, 6:00pm ..... Zerbin Family Circus
- 11:00am ..... Rides Open
- 11:00pm-5:00pm ..... Mule Pull • Equine Center
- 12:00pm, 3:00pm, 5:00pm ..... Tumbleweed Crossing
- 12:30pm, 3:30pm, 5:30pm ..... Agri-Puppets
- 1:00pm, 4:00pm, 8:00pm ..... Pig Races
- 2:00pm and 7:00pm ..... Taste of Dixie National Rodeo
- 2:00pm-11:00pm ..... Live Music in the Busch Light Pavillion
- 7:00pm ..... We Outside But Inside Party
- 11:00pm ..... Gates Close





# Sunday, October 13



## The Bibletones

3PM-5PM • BUSCH LIGHT PAVILLION



## No Ride Special Today

10:00am .....	Gates Open
10:00am-9:00pm .....	Biscuit Booth
11:00am-8:00pm .....	Mississippi State Fair Marketplace & Genuine MS® Store
11:00am-9:00pm .....	Farm Bureau Petting Zoo
11:00am, 6:00pm .....	Zerbini Family Circus
12:00pm .....	Rides Open
12:00pm, 3:00pm, 5:00pm .....	Tumbleweed Crossing
12:30pm, 3:30pm, 5:30pm .....	Agri-Puppets
1:00pm, 4:00pm, 8:00pm .....	Pig Races
2:00pm and 7:00pm .....	Taste of Dixie National Rodeo
3:00pm-10:00pm .....	Live Music in the Busch Light Pavillion
10:00pm .....	Gates Close



# Monday, October 14



# COLUMBUS DAY



## *Ride Special* Wristband Day \$35 • 12Noon-10pm

11:00am.....	Gates Open
11:00am-8:00pm.....	Mississippi State Fair Marketplace & Genuine MS® Store
11:00am-9:00pm.....	Farm Bureau Petting Zoo
11:00am-9:00pm.....	Biscuit Booth
12:00pm.....	Rides Open
12:00pm, 3:00pm, 5:00pm.....	Tumbleweed Crossing
12:30pm, 3:30pm, 5:30pm.....	Agri-Puppets
1:00pm, 4:00pm, 8:00pm.....	Pig Races
2:00pm, 6:00pm.....	Zerbini Family Circus
6:00pm-10:00pm.....	Live Music in the Busch Light Pavillion
7:00pm.....	Taste of Dixie National Rodeo
10:00pm.....	Gates Close



# THANK YOU *to our Sponsors!*



# FRONTIER

1



Presented by



- Taste of Dixie National Rodeo **1**
- Pig Races **2**
- Petting Zoo **3**
- Pony Rides **4**
- Agri-puppets **5**
- Tumbleweed Crossing **6**
- Sugar Cane **7**
- Alcorn State University **8**
- Prairie Farms **9**
- Biscuit Booth **10**

2



3



4



**MIDWAY**

**MIDWAY**

**MIDWAY**

**MIDWAY**

# VILLAGE

SPONSORED BY

**DEVINEY**

MADISON  
601-859-0020

JACKSON  
601-373-9531

7



6



5



8



8



8



8

9



10



MIDWAY

MIDWAY

MIDWAY

MIDWAY

# Food Vendors

 **CARNIVAL RIDES**

Busch Lite Tent
Lost & Found
Ohio's Best Lemonade
Egg Roll
Memphis Que
Bay City Concessions
<b>ATM</b>
AMR Tables
Polar Snow
Roasted Corn
BJ's Concessions
Tables
Mr. Turkey Leg
Judging Arena FFA/4H Exhibits
Security
<b>ATM</b>
Whistle Stop

Superiorland Concessions
A&W / Hot Dog
Bay City Concessions
Pasta Palace
Wonderstick
Penn's
Jenny's Potatoes
Jones Cornndog
Silver Dollar Cinnamon Rolls
Bay City Concessions
Alvin Raye's Pickles
Jones Slushie
George's Sausage

Sky Ride
Superiorland Concessions
Bay City Concessions
Pronto Pups
Benches
Kraffy Kreationz
Jammin Concessions
Monica's Concessions
Bay City Concessions
Polar Snow
MJSS-Jewelry
Sky Ride
Pronto Pup
Creamy Rich Ice Cream

Ohio's Best Lemonade
Bay City Concessions
J & D Blueberry
Polar Snow
Diggety Dog
Twisted Pretzels
Steak 'n Taters
JS Firehouse
Whistlestop/ Beer Garden

**WALKWAY**

Midway Bathrooms
Coke
String's BBQ
Pookies
Indolishus
Circle L Porkskins
Jones Slushie

**FERRIS WH**

**WALKWAY**

**LIVESTOC**

## K LANE

- Tent/Tables
- Jimmy's Concession
- ATM
- A&W Concessions
- Commissioner's Truck
- Biscuit Booth
- Prairie Farms
- Alcorn University

### WALKWAY

- All Aboard Trains
- Petting Zoo

### WALKWAY

- Wild West Show

## GATE 1



- Malone's
- George's Concessions
- George's Pizza
- Jones Concessions
- Dre's PPlace BBQ
- Green Ghost Tacos
- Dippin Dots'
- BJ's Concessions
- Creamy Rich Ice Cream
- Perfect Pie
- Trent's Trailer

## WALKWAY

- Cattleman's Association Beef Barn
- Polar Snow
- Baptist

## WALKWAY

- Malone's Taffy
- Porta Johns
- Security
- Superiorland Concessions

## EEL WAY

- BJ's Concessions
- Kandymellon
- Dennis Corndogs
- AMR Tables
- Jones Polish Sausage
- Malone's
- Champs BBQ
- Tents/Tables
- Foster Concessions
- Perfect Pie Pizza
- Polar Snow
- Dennis Corndogs

## WALKWAY

- Patton's Corn
- Prissy Paintbrush
- Superiorland Concessions

- Pronto Pup
- Sky Ride

- Baby Bottle Juices
- T-Mobile
- Dippin Dots
- Kimyata's Concessions
- Glam Bus
- ATM
- Circus
- Slide

## CARNIVAL RIDES



# Thank You!

The Mississippi Fairgrounds would like to thank all of you for joining us at the 165th Mississippi State Fair.

The Fair is a tradition of family fun, fair food, livestock shows, contests, rides, games, and music. Without your support, the Fair would not be possible.

**Andy Gipson**

Commissioner of Agriculture & Commerce



**MSSTATEFAIR.COM**

Be sure to visit our new website to stay up to date on all the upcoming events at the Mississippi State Fairgrounds.



Mississippi Fairgrounds  
1207 Mississippi Street, Jackson, MS  
601-961-4000 • Fax 601-354-6545  
msstatefair.com • mississippifairgrounds.com

Mississippi State Fair @statefairms @msstatefair