



**STATE OF MISSISSIPPI
DEPARTMENT OF AGRICULTURE AND COMMERCE**

ANDY GIPSON
COMMISSIONER

PRESS RELEASE

FOR IMMEDIATE RELEASE: January 19, 2024

Contact: Paige Manning, Director of Marketing and Public Relations
(601) 359-1163 / cell: (662) 312-5897
Paige@mdac.ms.gov

Hannah East, Marketing Specialist
(601) 359-1179
HannahE@mdac.ms.gov

MALTB Investigators Recover Stolen Ag Equipment in Sharkey County

JACKSON, Miss. – The Mississippi Agriculture and Livestock Theft Bureau (MALTB) recovered stolen property, with an estimated value of \$66,400, in Sharkey County last week.

On December 16, 2023, The Sunflower County Sherriff's Office took an initial report of two farm trucks stolen, along with tools and an equipment trailer. The Mississippi Agriculture & Livestock Theft Bureau was then notified of the stolen farm equipment.

MALTB was notified January 9, 2024, that a farmer in Sharkey County had theft of tools and damage to some farm equipment. Evidence and information provided to investigators suggested that one of the stolen trucks from Sunflower County, a 2018 FORD F250, was used in the Sharkey County theft.

Further investigation by MALTB led to the identification of several suspects and the recovery of the stolen trucks and trailer. This is an ongoing investigation with arrests forthcoming. MALTB Director Dean Barnard would like to extend his gratitude to MALTB investigators, Sharkey County Sherriff's Department and Sunflower County Sherriff's Office.

To prevent the theft of agricultural equipment and livestock, the MALTB recommends:

- Never leaving keys inside equipment or machinery;
- Parking equipment so that it is not visible from the road;
- Taking pictures and recording the serial numbers of all equipment;
- Registering your livestock brand with the MALTB and branding livestock;
- Keeping gates locked; and
- Installing cameras around your property.

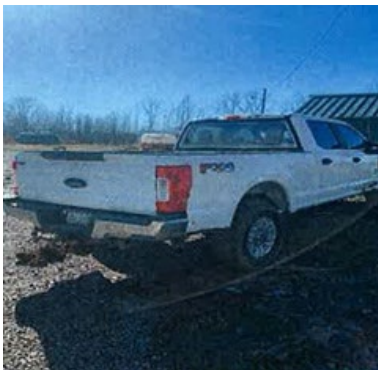
The Mississippi Agricultural and Livestock Theft Bureau, the law enforcement division of the Mississippi Department of Agriculture and Commerce, enforces state laws pertaining to the theft of cattle, horses, swine, poultry, fish, farm equipment, chemicals, timber and all other farm or agriculture-related crimes.

###



Mississippi Agricultural and Livestock Theft Bureau
Dean Barnard, Director
P.O. Box 1609
Jackson, MS 39215
Telephone: (601) 359- 1121
Tip Line: 1 (800) 678-2660

Photos attached.



The Mississippi Agriculture and Livestock Theft Bureau recovered stolen property, with an estimated value of \$66,400, in Sharkey County last week.